



HEARTWOOD
HOMES

82 White Hedge Drive, St. Albans

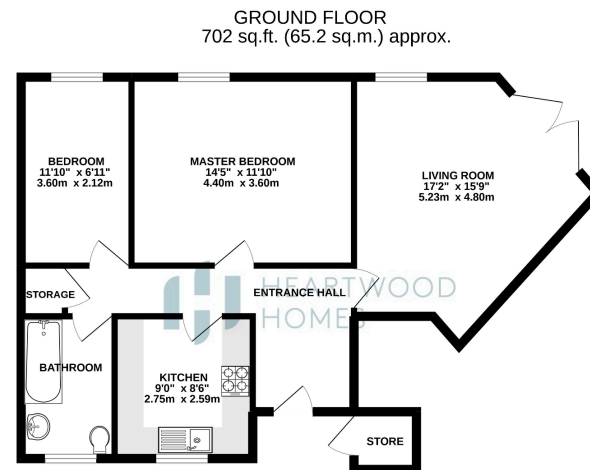
Guide Price £350,000

🛏️ 2 🚿 1 🚗 1



A great size ground floor maisonette with double doors opening to the communal grounds | Large living/dining room with doors to communal gardens | Separate modern kitchen | Contemporary bathroom | Residents parking | Located in a quiet cul-de-sac location





TOTAL FLOOR AREA: 702 sq.ft. (65.2 sq.m.) approx.
 Whilst every attempt has been made to ensure the accuracy of the figures contained herein, measurements of areas, volumes, weights and any other items are approximate and no responsibility is taken for any error or misstatement. This plan is for illustrative purposes only and should be used in conjunction with the prospectus. The services, facilities and equipment shown may not be available and no guarantee is made with reference to them.



Energy Efficiency Rating

Score	Energy rating	Current	Potential
92+	A		
81-91	B		
69-80	C	69 C	77 C
55-68	D		
39-54	E		
21-38	F		
1-20	G		