



Apartment 9 Trinity Street, West Hoe,
Plymouth, Devon, PL1 3FT



Offers Over £230,000

Lang Town and Country are delighted to present to the market this beautifully presented 1st floor apartment, which is being offered to the market with vacant possession.

9 Trinity Street, briefly comprises of: Entrance Hall, Useful Built-in storage, family bathroom with a three-piece suite offering bath and overhead shower, wash hand basin with large wall mirror over, low level WC with dual flush.

There are 2 double bedrooms with the master bedroom benefitting from a built-in wardrobe. Importantly, there is a spacious lounge/diner/kitchen area with access to a balcony boasting charming sea views. The kitchen has a range of Gloss wall and base units and a variety of integrated appliances namely larder fridge/freezer, oven and hob with extractor hood and dishwasher.

Outside the apartment has a parking space in a gated residents parking area and a balcony with fantastic sea views.

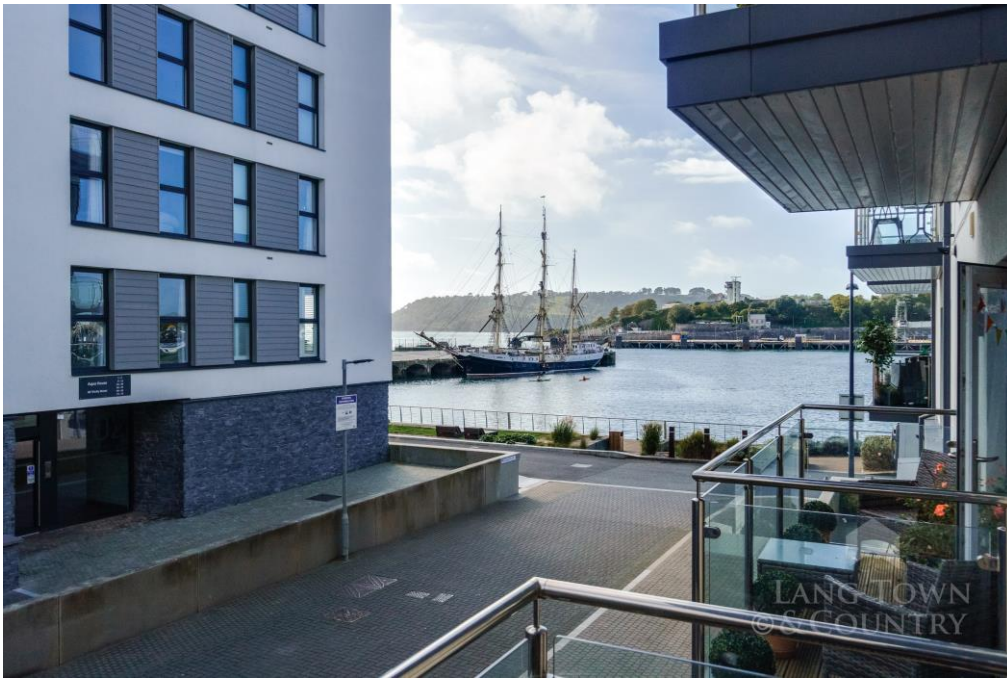
Quadrant Quay is a beautiful development set to the west of Plymouth Hoe within walking distance of the historic waterfront and Plymouth Sound. Nearby there is a Marina at King Point with a host of restaurants and cafes.

Agents Note

Lang Town and Country would highly encourage an internal inspection of this beautiful apartment to appreciate the location and quality of accommodation on offer.

Lease Information

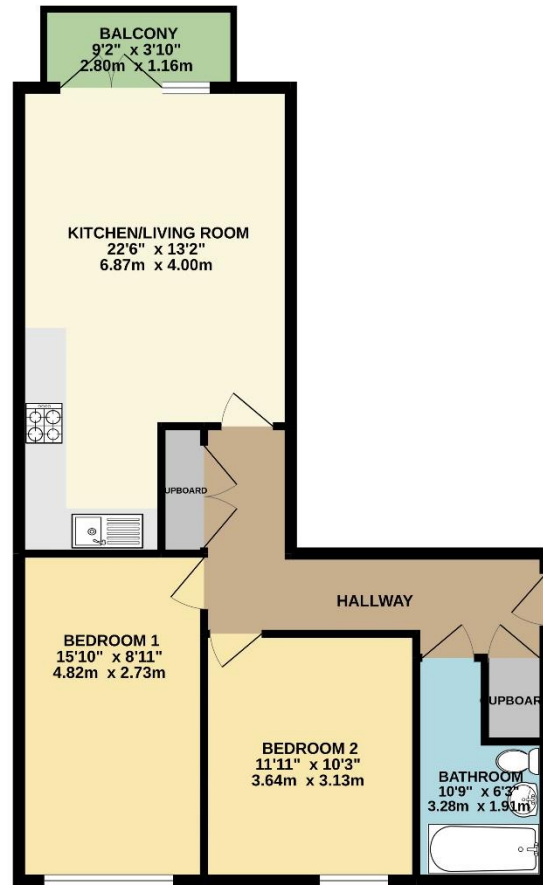
We understand the apartment is held on Lease with 234 years remaining and subject to a service charge of approximately £2,400 per year subject to change December 2023, and an annual ground rent of a peppercorn. The above information is provided in good faith although we would recommend that prospective purchasers consult their own solicitor for formal verification.



To view this property call Lang Town & Country Estate Agents on [01752 200909](tel:01752200909)



FIRST FLOOR APARTMENT
698 sq.ft. (64.9 sq.m.) approx.



TOTAL FLOOR AREA: 698 sq.ft. (64.9 sq.m.) approx.

Whilst every attempt has been made to ensure the accuracy of the floorplan contained here, measurements of doors, windows, rooms and any other items are approximate and no responsibility is taken for any error, omission or mis-statement. This plan is for illustrative purposes only and should be used as such by any prospective purchaser. The services, systems and appliances shown have not been tested and no guarantee as to their operability or efficiency can be given.
Made with Metropix ©2022



Lang Town & Country
6 Mannamead Road
Mutley Plain
Plymouth
PL4 7AA
Email: waterside@langtownandcountry.com
Tel: 01752 200909

Lang Town & Country endeavour to ensure the accuracy of property details produced and displayed, we have not tested any apparatus, equipment, fixtures, fittings or services and so cannot verify that they are connected, in working order or fit for purpose. A buyer must check the availability of any property and make an appointment to view before embarking on any journey to see a property.

