



1 Honcray, Oreston , Plymouth, Devon, PL9 7RN

Price £310,000

This attractive four-bedroom semi-detached house which is situated in Oreston, Plymstock. Offering ample living space and versatility to suit a growing family, this fantastic family home is set within a sought-after location and within close proximity to good schooling.

On the ground floor there are two reception rooms, a fitted kitchen and WC. The property features four generously sized bedrooms arranged over the first and second floors, ensuring ample space for families or those seeking extra room for guests or home offices.

To the front of the property there is ample parking and a detached garage at the rear, the carport is currently covered in wooden cladding by the current owners but this is easily removed allowing additional parking. The south-facing garden is a highlight of this property, providing a sun-drenched outdoor space ideal for relaxation and entertaining family and friends.

Oreston is a former fishing village on the Southern banks of the Cattewater. There are an array of amenities and recreational facilities to suit the general public. The picturesque coastal location provides moorings for boating enthusiasts and the use of a free public slipway. The village is served by a corner shop "Quay News" and has a well regarded public house and restaurant "The Kings Arms". Over recent years the local primary school has gained academy status and has been consistently ranked as one of Plymouth's best primary schools.

Transport links provide access to Plymstock and Plymouth city centre. A short distance from the property is the Broadway shopping centre where there are an array of shops and supermarkets.

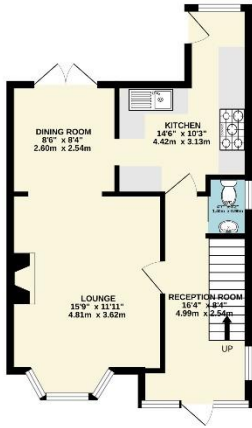


To view this property call Lang Town & Country Estate Agents on **01752 456000**.

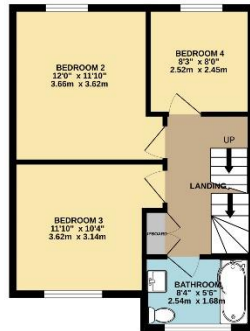
www.langtownandcountry.com



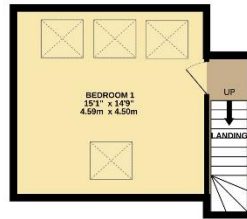
GROUND FLOOR
409 sq.ft. (43.5 sq.m.) approx.



1ST FLOOR
436 sq.ft. (40.5 sq.m.) approx.



2ND FLOOR
267 sq.ft. (24.8 sq.m.) approx.



TOTAL FLOOR AREA: 1172 sq.ft. (108.9 sq.m.) approx.
Measurements are approximate. Not to scale. Illustrative purposes only.
Made with Metropix ©2024



Lang Town & Country
6 The Broadway
Plymstock
Plymouth
PL9 7AU
Tel: 01752 456000
Email: plymstock@langtownandcountry.com
www.langtownandcountry.com

Lang Town & Country endeavour to ensure the accuracy of property details produced and displayed, we have not tested any apparatus, equipment, fixtures, fittings or services and so cannot verify that they are connected, in working order or fit for purpose. A buyer must check the availability of any property and make an appointment to view before embarking on any journey to see a property.

