



125 Pomphlett Road, Plymstock, Plymouth, Devon, PL9 7BU



Price £350,000



Welcome to this charming 1950's semi-detached house, boasting three bedrooms and a host of delightful features. Situated in a sought-after neighbourhood, this home exudes character and warmth from the moment you step through the door.

As you approach the property, you're greeted by the classic bay fronted windows, adding a touch of elegance to the exterior.

Upon entry, you'll find yourself in a cosy yet spacious living room, complete with a charming feature fireplace - perfect for those cosy evenings in. One of the highlights of this home is the open plan diner that seamlessly flows through to the kitchen, creating a perfect space for entertaining guests or enjoying family meals together. The kitchen is well-equipped and functional, with ample storage and workspace, making meal preparation a breeze.

Upstairs, you'll discover three inviting bedrooms, each offering comfort and tranquillity. The master bedroom features fitted wardrobes, providing plenty of storage space while maintaining the room's aesthetic appeal. The family bathroom is a luxurious retreat, complete with a shower and a stunning free-standing bath, ideal for unwinding after a long day.

Outside, the property continues to impress with its good-sized, well-established garden, offering a peaceful sanctuary to relax and enjoy the outdoors. The patio area is perfect for al fresco dining and entertaining during the warmer months. For those with vehicles, this property also includes a garage and ample parking space, providing convenience and security. In summary, this charming 1950's semi-detached house offers not only comfortable living but also a sense of timeless elegance and style. Don't miss the opportunity to make this your new home.

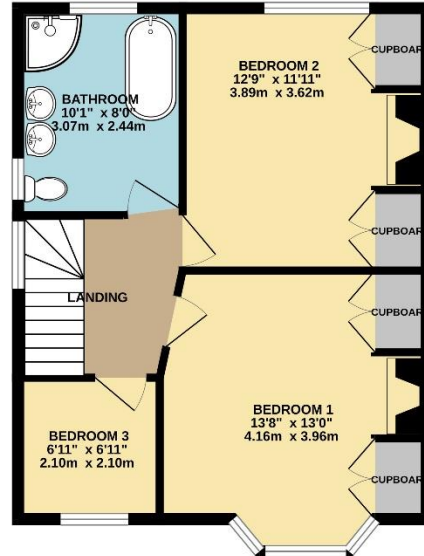
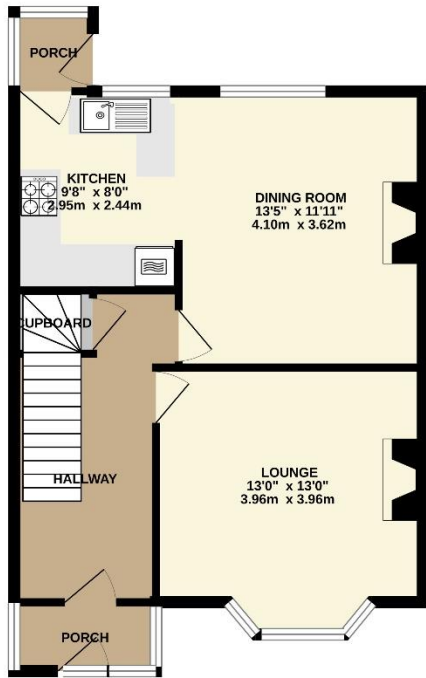
This property is close to an array of local amenities including the Broadway Shopping Centre, Doctor's Surgeries and Dental Surgeries. Recreational facilities can be found close by to include the Mount Batten Water Sports Centre, Staddon Heights Golf Course and the picturesque countryside and coastlines found at the South Hams which offers stunning walks along the Southwest coastal path. Transport links provide access to the vibrant Plymouth City Centre and the South Hams.



To view this property call Lang Town & Country Estate Agents on **01752 456000**.

www.langtownandcountry.com





TOTAL FLOOR AREA : 1044 sq.ft. (97.0 sq.m.) approx.
 Measurements are approximate. Not to scale. Illustrative purposes only
 Made with Metropix ©2024



Lang Town & Country

6 The Broadway

Plymstock

Plymouth

PL9 7AU

Tel: 01752 456000

Email: plymstockoffice@langtownandcountry.com

Lang Town & Country endeavour to ensure the accuracy of property details produced and displayed, we have not tested any apparatus, equipment, fixtures, fittings or services and so cannot verify that they are connected, in working order or fit for purpose. A buyer must check the availability of any property and make an appointment to view before embarking on any journey to see a property.

