



16 Weston Park Road, Peverell, Plymouth, Devon, PL3 4NT



Guide Price £375,000



Situated in one of Plymouth's most sought-after areas of Peverell close to the Hyde Park shopping parade and walking distance to Central Park is this charming 6-bedroom terraced family home.

The property retains many of the characterful features including, corning, ceiling mouldings, balustrade staircase with a newel post and original floorboards. The current owners have retained the plethora of periods features whilst perfecting blending and updating with contemporary touches.

The accommodation comprises on the ground floor of a vestibule and entrance hall, sitting room with an open and working fireplace and attractive bay window. The sitting rooms blends seamlessly with the dining room cresting the perfect area for hosting guests and evening entertainment. The accommodation continues on the ground floor to the large and contemporary kitchen / breakfast room with a full range of units, double AEG oven, 5 ring gas hob, integrated dishwasher and a drinks fridge. There is ample space for white goods to the rear with a utility space and plumbing.

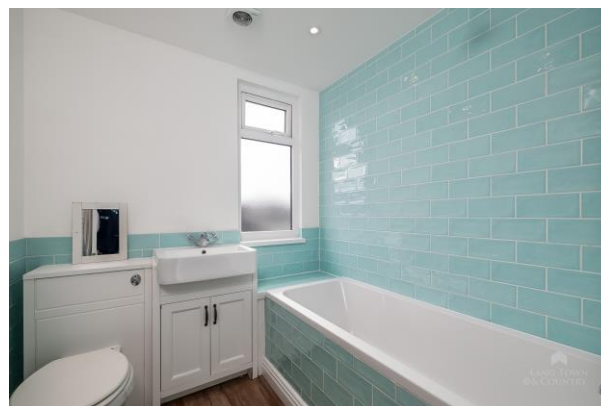
Stairs lead up to the first floor where you will find four bedrooms; 3 well-appointed double bedrooms and a further single/study. There is also a family bathroom comprising of a bath with mixer taps, separate shower cubicle, wash hand basin, heated towel rail and a WC.

Continue up to the top floor which has been cleverly converted to provide a further two double bedrooms and a well-appointed modern bathroom. The top floor front bedroom enjoys pleasant views of the City Centre, Central Park and Home Park stadium.

Externally there is a rear enclosed walled garden accessed via the French doors in the kitchen. The garden has been laid with decking perfect for entertaining and there is a pedestrian gate providing access to the rear lane and nearby road, where there is plenty of on street parking.



To view this property call Lang Town & Country Estate Agents on 01752 256000.





TOTAL FLOOR AREA : 1907 sq.ft. (177.1 sq.m.) approx.
 Whilst every attempt has been made to ensure the accuracy of the floorplan contained here, measurements of doors, windows, rooms and any other items are approximate and no responsibility is taken for any error, omission or mis-statement. This plan is for illustrative purposes only and should be used as such by any prospective purchaser. The services, systems and appliances shown have not been tested and no guarantee as to their operability or efficiency can be given.
 Made with Metropix ©2024



Lang Town & Country
 6 Mannamead Road
 Mutley
 Plymouth
 PL4 7AA
 Tel: 01752 256000
 Email: property@langtownandcountry.com

Lang Town & Country endeavour to ensure the accuracy of property details produced and displayed, we have not tested any apparatus, equipment, fixtures, fittings or services and so cannot verify that they are connected, in working order or fit for purpose. A buyer must check the availability of any property and make an appointment to view before embarking on any journey to see a property.

