



Plot 3, Frogmore Avenue, Egguckland,
Plymouth, Devon, PL6 5XH

Offers Over
£295,000

- 📌 3-Bedroom Semi-Detached House
- 📌 Private Development of Three Homes
- 📌 Accommodation Over Three Stories
- 📌 2 Parking Spaces
- 📌 Open Plan Living



Plot 3, Frogmore Avenue, Eggbuckland, Plymouth, Devon, PL6 5XH

Generous sized three bedroom semi-detached newly built family home. The property is situated in a small development of three family homes conveniently situated close to local amenities such as the Co-op and primary schools. The properties have good access links to the A38 as well as good local transport connections to the rest of the City and come with 2 allocated parking spaces.

Plot 3 Frogmore is a 3-bedroom, 3 storey semi-detached house. The property comprises of an entrance hallway, accessed via a porch which opens into the kitchen/diner with windows to the side and front elevations. Kitchen appliances will include a fridge freezer, electric Hob with oven and dishwasher. The lounge area has patio doors to the rear elevation with separate windows to the side. The downstairs accommodation is completed by a downstairs WC. Stairs rise from the hallway to the first-floor space which has two bedrooms and a bathroom. Stairs from the landing then give access to the master bedroom with ensuite. The master bedroom has dormer windows to both the front and rear elevations. Outside there are 2 allocated parking spaces. The rear garden can be accessed from the front path through a side gate. The garden will be part paved and part laid with artificial turf as well as having a timber built shed.

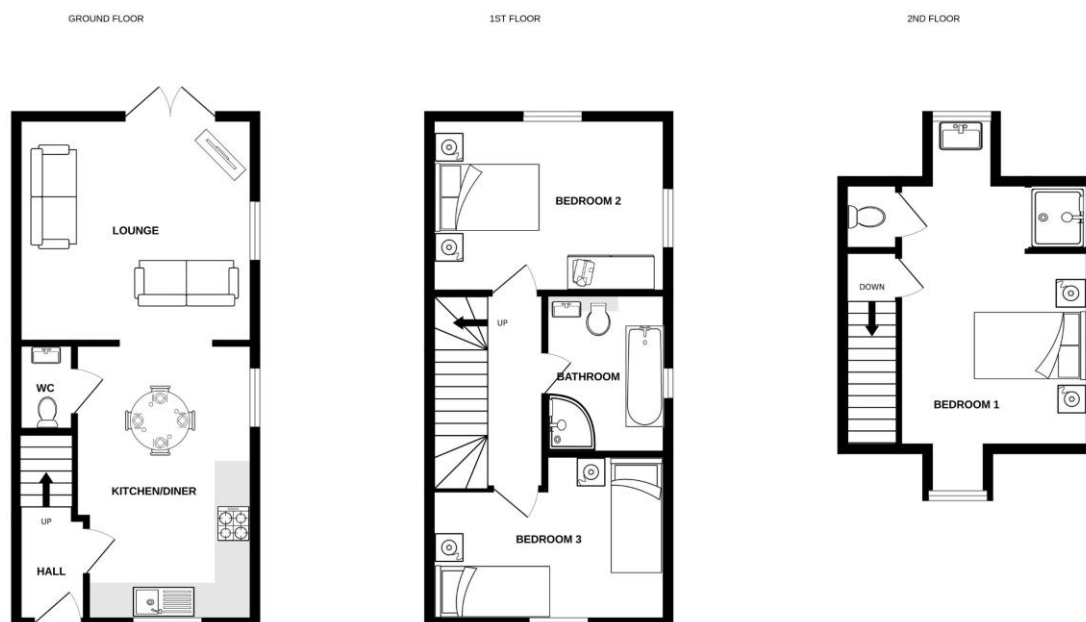
Location:

Eggbuckland is a popular residential suburb situated a little less than 3 miles from Plymouth City Centre. The properties are also a little under a mile to the A38, giving good access to Ivybridge, Exeter and beyond. Eggbuckland has many amenities including convenience stores, a public house, fish and chips shop, hair and beauty salons and takeaway establishments. Eggbuckland is also home to primary schools and a popular secondary school.

Agents note: Photos are taken from Plot 2 Frogmore Ave, which is the same property type.

Disclaimer:

The properties are new builds which are currently under construction. The images are computer generated and are indicative of the final finish only.



Whilst every attempt has been made to ensure the accuracy of the floorplan contained here, measurements of doors, windows, rooms and any other items are approximate and no responsibility is taken for any error, omission or mis-statement. This plan is for illustrative purposes only and should be used as such by any prospective purchaser. The services, systems and appliances shown have not been tested and no guarantee as to their operability or efficiency can be given.
Made with Metropix ©2024