



Hartley Avenue, Plymouth, Devon

£179,000



Situated in one of the most desirable roads in Hartley close to Hartley Park, supermarkets, tennis clubs and regular public transport into the vibrant City Centre, Lang Town and Country are delighted to offer to the market this wonderful two-bedroom top floor apartment boasting panoramic views of the nearby Compton Vale and towards Cornwall in a peaceful location.

The accommodation comprises a reception hall, a large lounge/dining room with a fabulous bay window enjoying spectacular views, a master bedroom which has a southerly aspect, views and fitted storage and wardrobes. Whilst the second double bedroom at the front of the property has a leafy outlook and is a great size. The kitchen/breakfast room has a fitted cooker, breakfast bar, sink and half with a drainer and plenty of space for white goods, along with leafy outlook. The spacious and modern bathroom has a bath with mixer taps, separate shower cubicle, hand wash basin, heated towel rail and a WC there is also a large storage cupboard on in the hallway perfect for storing household items.

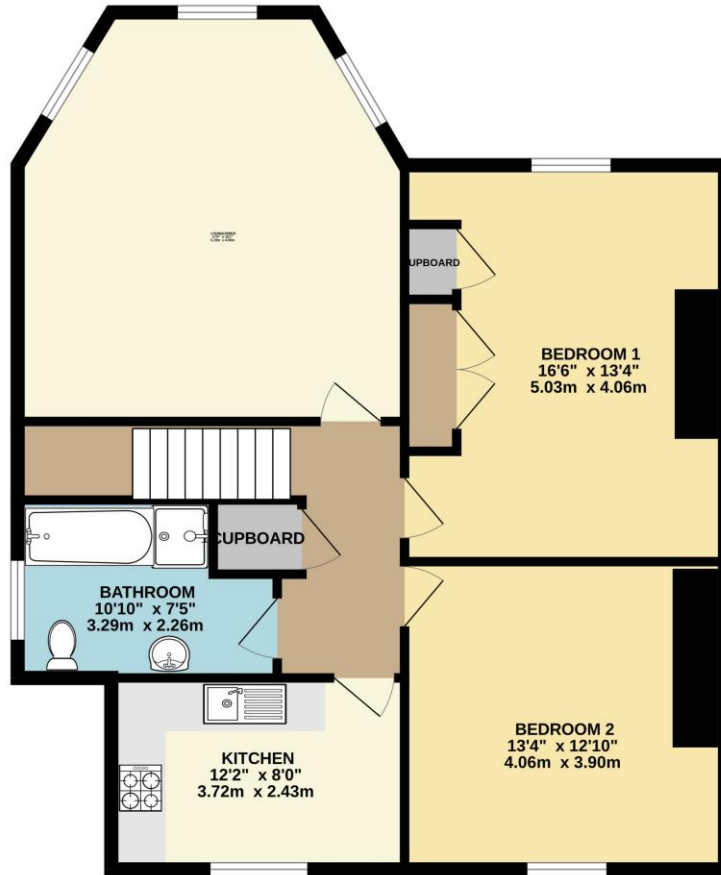
Externally, there is an allocated parking space which is to the left-hand side as you look towards the property. There is a lockable side gate which leads down some steps to the boiler room and to the lovely rear gardens which are enclosed and have a patio, a lawn, trees, various shrubs and enjoys a southerly aspect.

Additional Information: We understand that the freehold is made up of four residents who each own an apartment with the building. The building is managed by Freehold Management (FMS) Ltd and each apartment contributes £80 per month to the management fund.



To view this property call Lang Town & Country Estate Agents on **01752 256000**.





TOTAL FLOOR AREA : 909 sq.ft. (84.4 sq.m.) approx.
 Whilst every attempt has been made to ensure the accuracy of the floorplan contained here, measurements of doors, windows, rooms and any other items are approximate and no responsibility is taken for any error, omission or mis-statement. This plan is for illustrative purposes only and should be used as such by any prospective purchaser. The services, systems and appliances shown have not been tested and no guarantee as to their operability or efficiency can be given.
 Made with Metropix ©2024



Lang Town & Country
 6 Mannamead Road
 Mutley
 Plymouth
 PL4 7AA
 Tel: 01752 256000
 Email: property@langtownandcountry.com

Lang Town & Country endeavour to ensure the accuracy of property details produced and displayed, we have not tested any apparatus, equipment, fixtures, fittings or services and so cannot verify that they are connected, in working order or fit for purpose. A buyer must check the availability of any property and make an appointment to view before embarking on any journey to see a property.

