



Garden Flat 121, Durnford Street, Stonehouse, Plymouth, Devon, PL1 3QP

Price £215,000

Durnford Street' is located on the Southwestern corner of Plymouth's waterfront, on the fringe of the rapidly changing Millbay and is one of Plymouth's most complete Georgian Streets. Designated as a Conservation Area and restored in the 1990s as part of an Urban Development Corporation, the location is dominated by the extraordinary and remarkable buildings including the Royal William Yard, the former Naval Victualling Yard.

The imposing and substantial stone structures of The Yard now comprises a variety of excellent restaurants, boutique retail establishments and a bakery.

From Durnford Street, steps lead down to a private front door and a reception hallway. From here there is access to two bedrooms (a double and a single), a spacious bathroom which is also utilised as a utility area, kitchen and a rear lobby with door leading out to a private patio/garden which is lawned to lawn.

Importantly, to the rear of the garden there is a garage with door leading to the rear service lane.

Lang Town and Country are most delighted to be able to present this flat to the market which we understand is being offered with no onward chain.

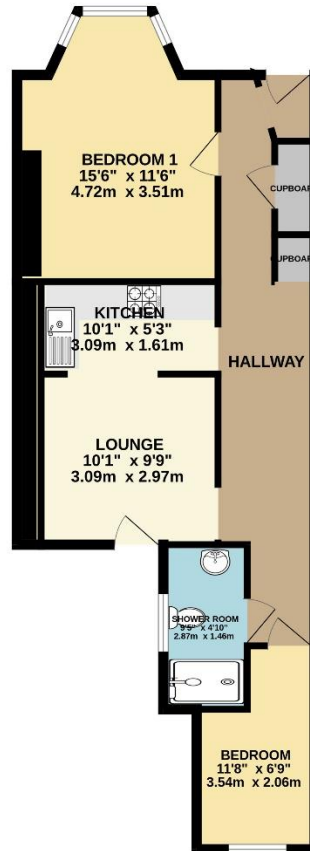


To view this property call Lang Town & Country Estate Agents on [01752 200909](tel:01752 200909)

www.langtownandcountry.com



GROUND FLOOR
595 sq.ft. (55.2 sq.m.) approx.



TOTAL FLOOR AREA: 595 sq.ft. (55.2 sq.m.) approx.
Whilst every attempt has been made to ensure the accuracy of the floorplan contained here, measurements of doors, windows, rooms and any other items are approximate and no responsibility is taken for any error, omission or mis-statement. This plan is for illustrative purposes only and should be used as such by any prospective purchaser. The services, systems and appliances shown have not been tested and no guarantee as to their operability or efficiency can be given.
Made with Metropix ©2024



Lang Town & Country
6 Mannamead Road
Plymouth
PL4 7AA
Tel: 01752 200909
Email: waterside@langtownandcountry.com
www.langtownandcountry.com

Lang Town & Country endeavour to ensure the accuracy of property details produced and displayed, we have not tested any apparatus, equipment, fixtures, fittings or services and so cannot verify that they are connected, in working order or fit for purpose. A buyer must check the availability of any property and make an appointment to view before embarking on any journey to see a property.

