



17 Acre Place, Stoke, Plymouth, Devon, PL1 4QR

£425,000

This impressive 6-bedroom end terrace property positioned just moments from Devonport Park on Acre Place, offers versatile living space arranged over three storeys, ideal for multi-generational living. Bursting with character, the home retains beautiful period features including original shutters, intricate ceiling roses, and elegant corncicing.

Upon entering, you are greeted by a welcoming vestibule leading into a spacious entrance hall. The ground floor features a comfortable lounge with sliding doors connecting to the dining room, perfect for entertaining. A well-appointed kitchen breakfast room, a convenient downstairs WC, and access to the rear garden complete the level.

On the first floor, the main part of the house boasts four generous bedrooms, each with access to one of four bathrooms, providing ample space for family or guests. The top floor is home to a stunning master suite, complete with a walk-in wardrobe, en-suite bathroom, and delightful partial river views from both the front and rear.

Additionally, the rear tenement section of the house offers a split-level, self-contained one-bedroom suite with a lounge and bathroom, providing privacy and flexibility. A utility room serves this section, adding further practicality.

Externally, the property enjoys a rear walled garden, perfect for outdoor relaxation, as well as a hardstand with parking for one car and a single garage with power.

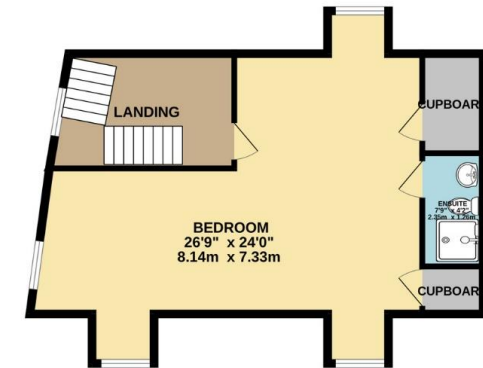
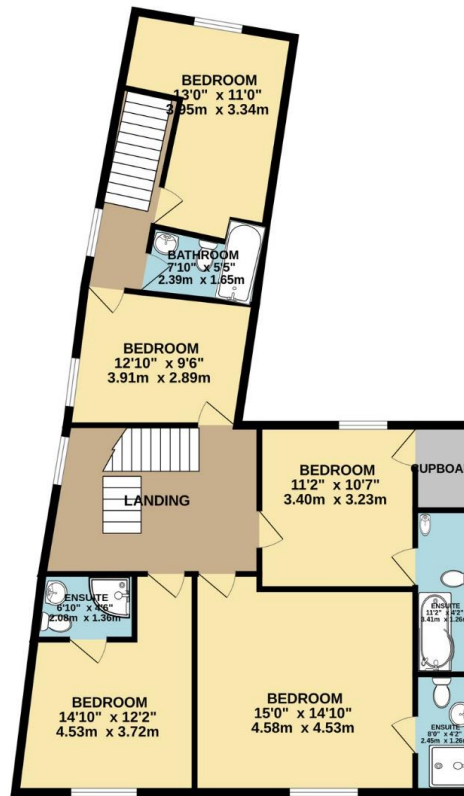
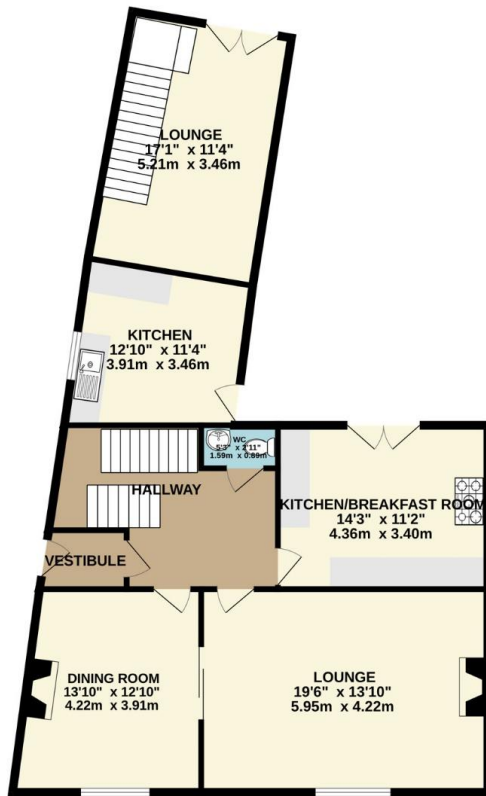
This unique home combines period charm with modern functionality, creating a perfect blend of comfort, style, and space for a variety of living arrangements.

To view this property call Lang Town & Country Estate Agents on 01752 256000.

www.langtownandcountry.com







TOTAL FLOOR AREA : 2700 sq.ft. (250.8 sq.m.) approx.

Whilst every attempt has been made to ensure the accuracy of the floorplan contained here, measurements of doors, windows, rooms and any other items are approximate and no responsibility is taken for any error, omission or mis-statement. This plan is for illustrative purposes only and should be used as such by any prospective purchaser. The services, systems and appliances shown have not been tested and no guarantee as to their operability or efficiency can be given.
 Made with Metropix ©2024



Lang Town & Country
 6 Mannamead Road
 Plymouth
 PL4 7AA
 Tel: 01752 456000
 Email: property@langtownandcountry.com
www.langtownandcountry.com

Lang Town & Country endeavour to ensure the accuracy of property details produced and displayed, we have not tested any apparatus, equipment, fixtures, fittings or services and so cannot verify that they are connected, in working order or fit for purpose. A buyer must check the availability of any property and make an appointment to view before embarking on any journey to see a property.

