

Flat 18 Orchid Court, Granville Road, London

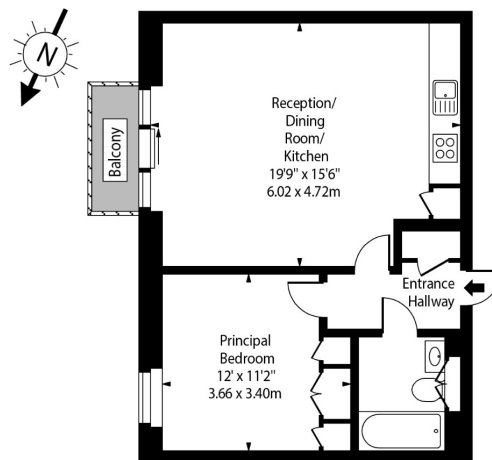
£399,950

1 1 1



- Private terrace
- Lift to all floors including underground parking
- Awarded for being the most Eco Friendly development of its time.
- EPC rating B
- Chain-free
- Secure gated underground parking
- Site Manager
- Easy walking distance from Golders Green Station (Zone 3 Northern Line).
- 521 Sq. Ft.
- Walking distance to Childs Hill Park

Orchid Court,
Granville Road, NW2 2BE



First Floor

Approx Gross Internal Area 521 Sq Ft - 48.40 Sq M

For Illustration Purposes Only - Not To Scale Floor Plan by www.nogaphotostudio.com Ref: No.42813

This floor plan should be used as a general outline for guidance only. Any intending purchaser or lessee should satisfy themselves by inspection, searches, enquiries and full survey as to the correctness of each statement. Any areas, measurements or distances quoted are approximate and should not be used to value a property or be the basis of any sale or let.

This stunning apartment has a spacious reception room with an open plan kitchen and glass sliding doors opening onto the terrace. The bedroom has built-in wardrobes and the bathroom is spacious and well-appointed. The apartment is in excellent condition and well-presented having recently been re-decorated throughout. The block provides residents with an onsite property manager Monday to Friday, communal gardens and secure allocated underground parking.