

Radcliffe Avenue, London, NW10 5XU

£625,000

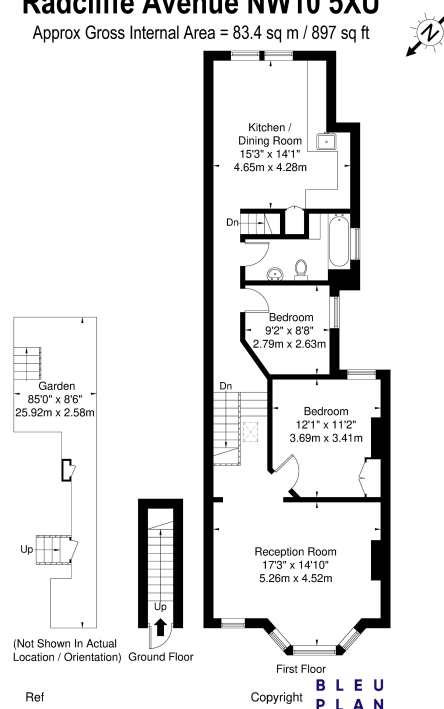
🛏️ 2 🚿 1 🚗 2



- Stylish 2 bedroom top floor apartment
- Arranged over the top floor of a lovely period property
- The kitchen has side access to the garden
- Radcliffe Avenue is in close walking distance to College Road
- There is sole access to the large loft which benefits from lots of practical storage space
- Located on a residential tree-lined street
- A spacious kitchen with plenty of space to dine
- Enjoys a lovely sunny garden
- Transport is easily accessible, with Willesden Junction (Bakerloo & Overground)
- Please watch the video and quote property ref LL0089

Radcliffe Avenue NW10 5XU

Approx Gross Internal Area = 83.4 sq m / 897 sq ft



The Floor plan is not to scale and measurements and areas shown are approximate and therefore should be used for illustrative purposes only. The plan has been prepared in accordance with the RICS code of Measuring Practice and whilst we have confidence in the information produced it must not be relied on. If there is any aspect of particular importance, you should carry out or commission your own inspection of the property.
Copyright © BLEUPLAN

A stylish 2 bedroom, top floor apartment with a sunny garden, located on a residential tree-lined street close to the wonderful Roundwood Park and conveniently located close to Willesden Junction for excellent transport Links.

Please watch the video and quote property ref LL0089