

Flat 127, Penshurst, Queens Crescent

£625,000

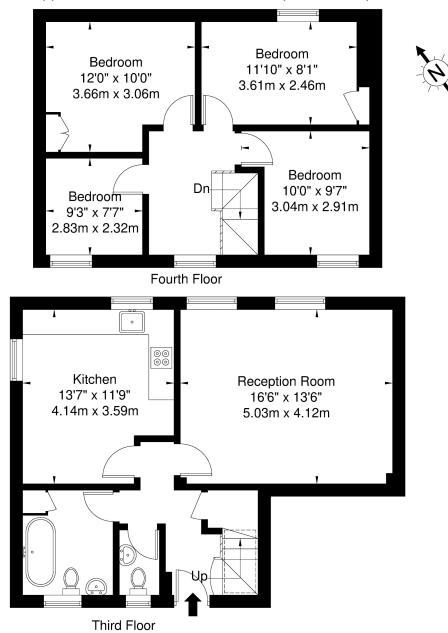
🛏 4 🚿 0 🚗 0



- A substantial duplex apartment (measuring over 1012 sq.ft)
- A stroll away from Chalk Farm, Belsize Park, Camden, Kentish Town and Hampstead Heath
- Sought-after, central location
- Easy access to an abundance of local amenities
- A stroll away from the wonderful Regents Park, London Zoo and Primrose Hill.
- 4 double bedroom duplex apartment
- Arranged over the 3rd and 4th floor
- Large and bright reception room
- Close to Camden's famous Stable Market, London's West End, The City,
- Please watch the video and quote property ref LL0089 to speak to Liana Loporto – Local Property Expert

Penshurst Queens Crescent NW5 3QJ

Approx. Gross Internal Area = 94.0 sq m / 1012 sq ft



Ref

Copyright

**BLEU
PLAN**

The Floor plan is not to scale and measurements and areas shown are approximate and therefore should be used for illustrative purposes only. The plan has been prepared in accordance with the RICS code of Measuring Practice and whilst we have confidence in the information produced it must not be relied on. If there is any aspect of particular importance, you should carry out or commission your own inspection of the property.
Copyright © BLEUPLAN

A substantial (measuring over 1012 sq.ft), bright and airy 4 bedroom duplex apartment conveniently located on the 3rd and 4th floor of a smart purpose built block, a stroll away from Chalk Farm, Belsize Park, Camden, Kentish Town and Hampstead Heath.