

Caddington Road, NW2

£550,000

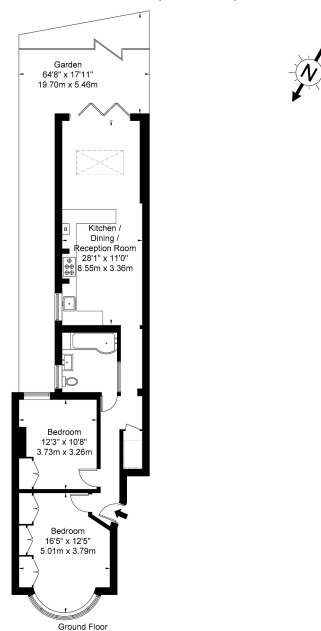
🛏 2 🚿 1 🚗 1



- Two bedroom garden apartment
- Located on a residential tree lined street in NW2
- Close to Cricklewood, Hampstead, West Hampstead, Willesden Green and Brent Cross
- Boasting elegant décor and presented in immaculate condition
- Enjoys well planned living space with an abundance of natural light
- Bi-folding doors which lead out to the large sunny garden
- Key highlights include double glazed doors and windows throughout and stylish shutters in the bedroom
- Close walking distance to Cricklewood station which is on the Thameslink
- Within easy reach of Fortune Green park, Clitterhouse Farm and Recreation Ground or Clitterhouse Playing Fields
- Please quote property ref LL0089

Caddington Road, NW2 1RP

Approx Gross Internal Area = 73.2 sq m / 787 sq ft



Ref

Copyright

**BLEU
PLAN**

The Floor plan is not to scale and measurements and areas shown are approximate and therefore should be used for illustrative purposes only. The plan has been prepared in accordance with the RICS code of Measuring Practice and whilst we have confidence in the information produced it must not be relied on. If there is any aspect of particular importance, you should carry out or commission your own inspection of the property.
Copyright © BLEUPLAN

A superb two bedroom garden apartment on Caddington Road, a residential tree lined street in NW2, close to Cricklewood, Hampstead, West Hampstead, Willesden Green and Brent Cross.

Boasting elegant décor, this fantastic two bedroom apartment is presented in immaculate condition and enjoys well planned living space. On entry the hallway provides access to two double bedrooms, family bathroom and an open plan kitchen / living area which boasts plenty of

space for relaxing and an abundance of natural light streaming through the bi-folding doors which lead out to the large sunny garden.