



LIANA LOPORTO-BROWNE POWERED BY **exp** TM UK

@ liana@lianaloporto.co.uk

lianaloporto.co.uk

07460 088 110

Needham Terrace NW2

£650,000

🛏️ 2 🚗 2

An immaculate, detached, Freehold, 2 bedroom house with a sunny, surrounding private garden, parking for 2 cars, a Lock up garage with adjacent private car park space and a 2nd private off-street parking space. Needham Terrace is located within a quiet enclave and Cricklewood Conservation area, a short stroll away from the wonderful Gladstone Park and the many amenities and fantastic transport links that Cricklewood has to offer.



Floor Area: sq. ft.

Tenure: Not given

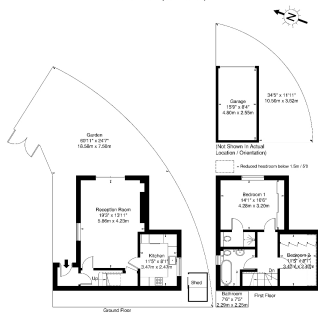
Service Charge: £ per annum

Ground Rent: £ per annum



Needham Terrace, NW2 6QL

Approx. Gross Internal Area = 76.8 sq m / 826 sq ft
Garage = 12.2 sq m / 131 sq ft
Total = 89 sq m / 957 sq ft



BLEU
Ref: Croydon **PLAN**
Disclaimer: Floor plan measurements are approximate and are for illustrative purposes only. While we do not doubt the floor plan accuracy and completeness, you or your advisors should conduct a careful, independent investigation of the property in respect of monetary valuation.



eXp World UK Ltd is a registered company at Level 37, 25 Canada Square, London, E14 5LQ.

Registered company number is 12016573. VAT Registration Number is 327 4120 29