

Windsor Road, NW2

£465,000

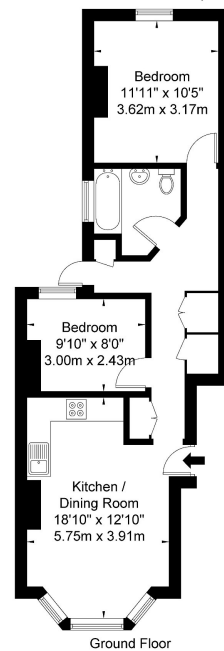
🛏️ 2 🚿 1 🚗 1



- A two bedroom garden apartment
- A short walk away from all the amenities of Willesden High Road
- A stunning private garden with seating area and 70 year old camelia trees
- Equidistant between Willesden Green Station and Dollis Hill Station both on the Jubilee
- There's a local Sainsbury's close by on the High Road
- Recently lovingly renovated to a high standard
- High ceilings and well planned living space
- BBQ area
- Both Roundwood Park and Gladstone Park are within walking distance
- Long lease (over 117 years left), very low maintenance costs

Windsor Road Brochure

Approx Gross Internal Area = 53.9 sq m / 580 sq ft



Ref

Copyright **BLEU
PLAN**

The Floor plan is not to scale and measurements and areas shown are approximate and therefore should be used for illustrative purposes only. The plan has been prepared in accordance with the RICS code of Measuring Practice and whilst we have confidence in the information produced it must not be relied on. If there is any aspect of particular importance, you should carry out or commission your own inspection of the property.
Copyright © BLEUPLAN

A superb two bedroom garden apartment that oozes style and charm, recently lovingly renovated to a high standard by the owner occupiers, a short walk away from all the amenities of Willesden High Road.