

Crewys Road, NW2

£1,500,000

🛏 5 🚿 3 🚗 3



Designed by an award winning architect this 5 bedroom family home is one of a kind – substantially larger than any other house on the street this Victorian family home has been stripped back to the bare bones to be rebuilt to the owners exacting standards. Cleverly extended to just under 2000sq.ft (185.4sqm) using every inch to create a thoughtful, bright, beautiful and functional space. This special home has a landscaped south facing garden and is situated on a quiet, residential tree-lined street. Childs Hill park with Playground and Café, the wonderful green open spaces of Hampstead and Hampstead Heath, and the delights of Golders Hill park are all a short stroll away.

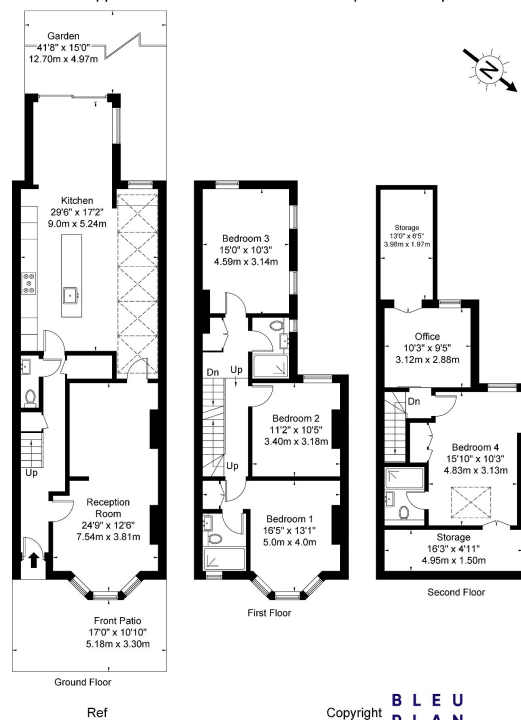
LB Residential is proud to be appointed as the sole agent for this exclusive home. To book your viewing slot on the open day please contact us directly, spaces are limited so book your place promptly to avoid disappointment.

Key Features

- One of a kind 5 bedroom family home
- Designed by an award winning architect
- Stripped back to the bare bones and rebuilt
- 3 bathrooms
- New wiring, plumbing, double glazed windows and doors and is well insulated
- Cleverly extended to just under 2000sq.ft (185.4sqm)
- Designer German Kitchen with Carrara quartz
- Sunny south west facing garden
- Heatmiser underfloor heating throughout
- Close to the excellent local amenities of Golders Green and Hampstead Village

Crewys Road NW2 2AU

Approx Gross Internal Area = 185.4 sq m / 1995 sq ft



Ref Copyright **BLEU PLAN**
The Floor plan is not to scale and measurements and areas shown are approximate and therefore should be used for illustrative purposes only. The plan has been prepared in accordance with the RICS code of Measuring Practice and whilst we have confidence in the information produced it must not be relied on. If there is any aspect of particular importance, you should carry out or commission your own inspection of the property.
Copyright © BLEUPLAN