




Elgin Avenue, Maida Vale, W9

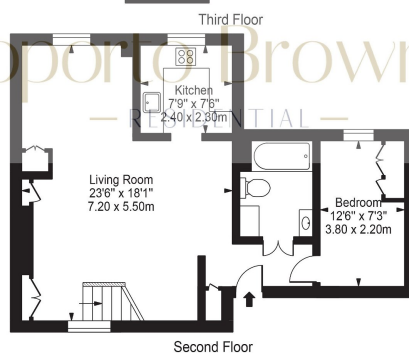
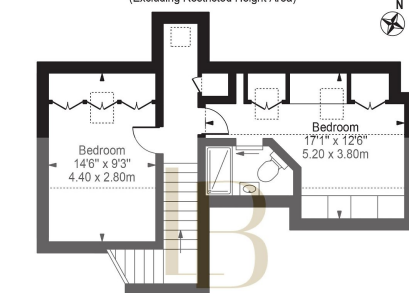
£750,000

 3  2  2



- A super stylish, duplex 3-bed top-floor apartment
- A lovely sun-filled reception room and dining area
- Plenty of storage has been added creating a clean, uncluttered environment
- SC £3366 per annum 2023, GR £150 per annum, Council tax band D
- Please watch the video and call Oli or Liana to arrange a viewing
- Renovated to a high standard and arranged over the top 2 floors of a converted Former Dairy Factory
- The third bedroom serves as a bedroom or perfect WFH space
- Tenure: Leasehold – Long Lease had just extended – call for more info
- Elgin Avenue is close to a range of local shops, cafes, and restaurants of Maida Vale, Little Venice, Notting Hill, Paddington, and St Johns Wood

Elgin Avenue
 Approx. Total Internal Area 1030 Sq Ft - 95.67 Sq M
(Including Restricted Height Area)
 Approx. Gross Internal Area 877 Sq Ft - 81.47 Sq M
(Excluding Restricted Height Area)



For Illustration Purposes Only - Not To Scale

This floor plan should be used as a general outline for guidance only and does not constitute in whole or in part an offer or contract. Any intending purchaser or lessee should satisfy themselves by inspection, searches, enquiries and full survey as to the correctness of each statement. Any areas, measurements or distances quoted are approximate and should not be used to value a property or be the basis of any sale or let.

Looking for somewhere in Maida Vale to call your next home?

A super stylish, duplex 3-bed top-floor apartment, renovated to a high standard arranged over the top 2 floors of a converted Former Dairy Factory (Weldford's and Sons), a short stroll away from the heart of Maida Vale, Little Venice, Notting Hill, and Golborne Road.

Contact us for a viewing

Please watch the video and call Oli or Liana to arrange a viewing.