

## Marley Walk

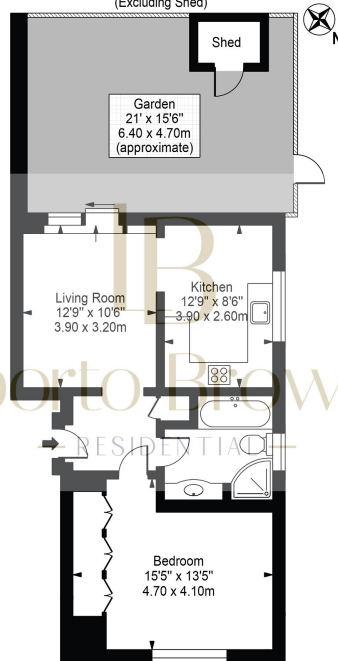
£350,000

🛏 1 🚿 1 🚗 1



- Bright one bedroom garden flat
- Spacious bedroom with built-in storage
- Off street parking and communal gardens
- Close to all the amenities of Willesden High Road
- Dine-in kitchen
- Excellent south-west facing private garden
- Fast and regular connections into Central London from Willesden Green Station
- A short stroll away to beautiful Gladstone Park

**Marley Walk**  
 Approx. Gross Internal Area 571 Sq Ft - 53.08 Sq M  
 (Excluding Shed)



Ground Floor  
 For Illustration Purposes Only - Not To Scale

This floor plan should be used as a general outline for guidance only and does not constitute in whole or in part an offer or contract. Any intending purchaser or lessee should satisfy themselves by inspection, searches, enquiries and full survey as to the correctness of each statement. Any areas, measurements or distances quoted are approximate and should not be used to value a property or be the basis of any sale or let.

A charming and spacious one bedroom garden apartment arranged over the ground floor of a purpose-built block, a short walk away from Willesden Green Underground Station. This lovely home offers bright accommodation with ample storage and a lovely south-west facing private garden. The reception room is drenched in sunlight and opens up onto the generous garden, the kitchen is fully equipped with space to dine and the large bedroom offers ample storage space with the beautiful built-in wardrobes.

Local shops are a short walk away including Newman's Pharmacy with the amazing Auntie Bavna and her holistic remedies, Delice Café offering the best salads and bacon butties in Willesden Green, Beer and Burger, Sanzio Italian Restaurant, Gail's Bakery just to name a few.