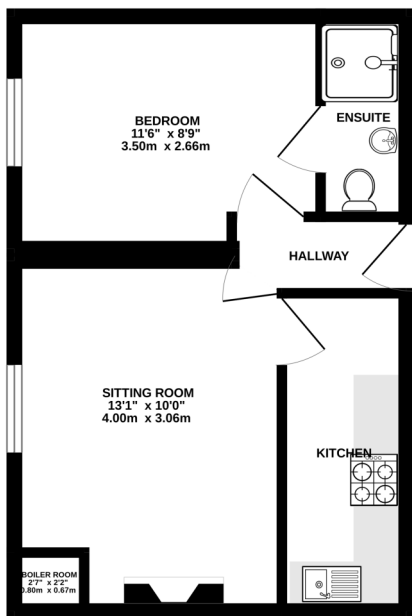
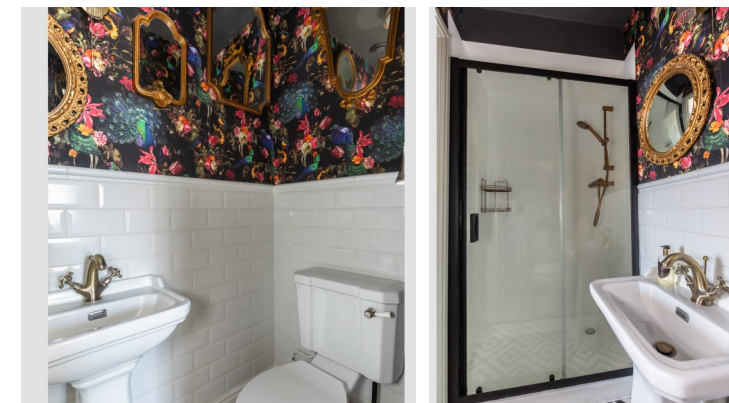


Catherine Street, Frome BA11 1DA

A short stroll from Frome's vibrant Catherine Hill sits this beautifully presented one bedroom flat, suitable for first time buyers or those looking for a central base town. The entrance to the building is through a unsuspecting smart door set back from the street. A smart communal entrance leads you up a impressive winding stair case. The flat is located on the second floor, as you enter you are greeted by the practical hallway, currently decorated with what is believed to be original William Morris. Following through into the sitting room there are many period features such as a feature fireplace, a sweet cornice frames the room and a large sash window displays the rooftops of Frome. The galley kitchen is made up of base cupboards and open shelves above. Also integrated into the kitchen is a gas top hob, oven and space for a free standing fridge/freezer. Another stunning wallpaper adorns the bedroom, creating a luxurious backdrop to the room. The space comfortable holds a double bed with room for additional bedroom furniture. Through into the en-suite there is a large shower and traditional style sink and toilet. Modern metro tiles contrast perfectly with the vibrant style of the wallpaper, continue the theme of opulence throughout the flat. EPC- C, Council Tax- A, Leasehold, Mains Gas, Drainage, Electric.

Lease length - 999 years from December 2002, Ground Rent £100 PA, Service Charge £1,312.31 PA



Score	Energy rating	Current	Potential
2+	A		
1-91	B		
9-80	C	69 C	75 C
5-68	D		
9-54	E		
1-38	F		
20	G		



Asking Price £150,000

Hunter French

01373 464040

frome@hunterfrench.co.uk | www.hunterfrench.co.uk

