

whiteley helyar



1,090ft²
excluding garage



3 double
bedrooms



bathroom and
shower room



garage

Guide Price £700,000

5 Raby Mews, Bathwick, Bath, BA2 4EJ

An excellent mews house with a garage and private garden beautifully refurbished to create stylish contemporary accommodation within a converted Listed building, most conveniently located just a very short walk from the city centre. No onward chain.

ACCOMMODATION

3 double bedrooms
shower room
spacious kitchen
double glazing

bathroom
living /dining room opening onto the garden
garage
gas fired heating (both underfloor and radiators)

EXTERNALLY

Delightful paved courtyard garden to the rear, sunny side of the house. It is enclosed by natural stone walling, with electric and water supplies and offers space for potted plants and a table and chairs.

LOCATION

Raby Mews forms part of a small select row of houses, tucked away in this highly desirable, peaceful and central position. The shops and other amenities in Bathwick Street and on Bathwick Hill are very closeby, whilst the countless amenities in the centre of Bath are within easy level walking distance. Delightful walks through Henrietta Park, Sydney Gardens and along the Kennet and Avon Canal are close at hand - as is Bath Spa Railway Station and the Bath Rugby Recreation Ground.



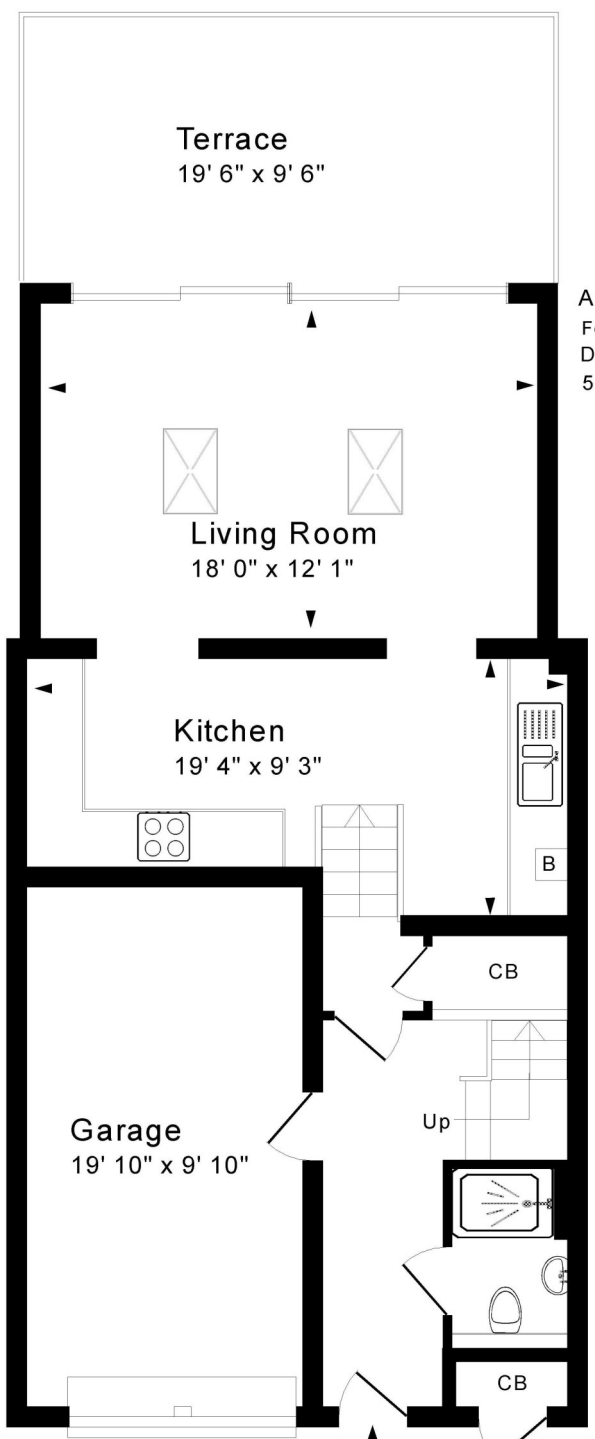




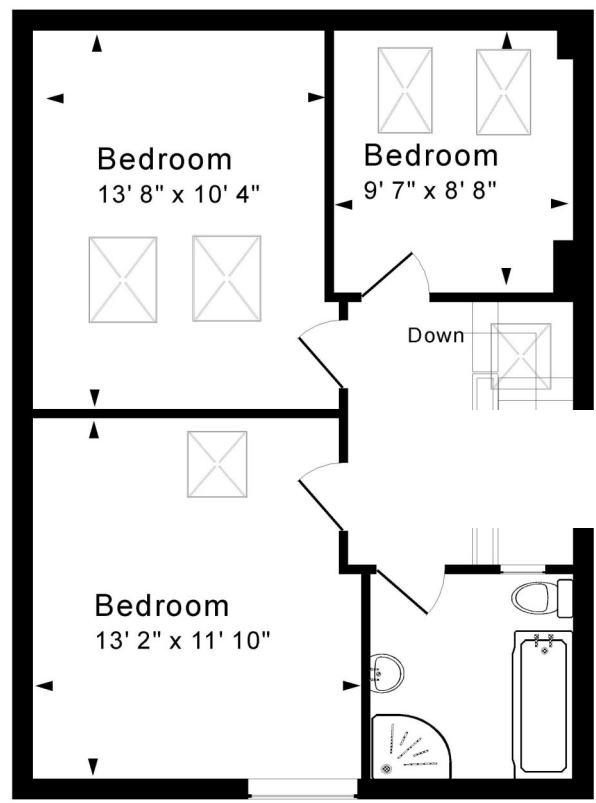
Tenure: Freehold
Council tax band: 'E' £2,333.17

Approx. Gross Internal Floor Area 1,090 Sq. Ft. / 101 Sq. M
 For identification purposes only. Not to scale. Copyright Jemesis Ltd 2022
 Drawing Number: 172-0544
 5 Raby Mews, Bath, BA2 4EJ.

| Energy Efficiency Rating | | |
|---|---------|-----------|
| | Current | Potential |
| Very energy efficient - lower running costs | | |
| A | | 85 |
| B | | |
| C | 72 | |
| D | | |
| E | | |
| F | | |
| G | | |
| Not energy efficient - higher running costs | | |
| England & Wales EU Directive 2002/91/EC | | |
| www.epc4u.com | | |



Ground Floor



First Floor

