

whiteley helyar



910 ft²



2 bedrooms



2 shower rooms



'on street'
parking

Guide Price £500,000

Garden Apartment, 7 Argyle Street, Bath, BA2 4BA

DESCRIPTION

A spacious garden apartment contained within an elegant Grade II Listed Georgian Town House right in the very heart of the city centre with private entrance and courtyards, offering unique and remarkably peaceful accommodation and suitable for use as a HOLIDAY LET.

ACCOMMODATION

2 bedrooms
large kitchen/dining room
gas fired heating

2 bathrooms
basement store room
vaulted sitting room

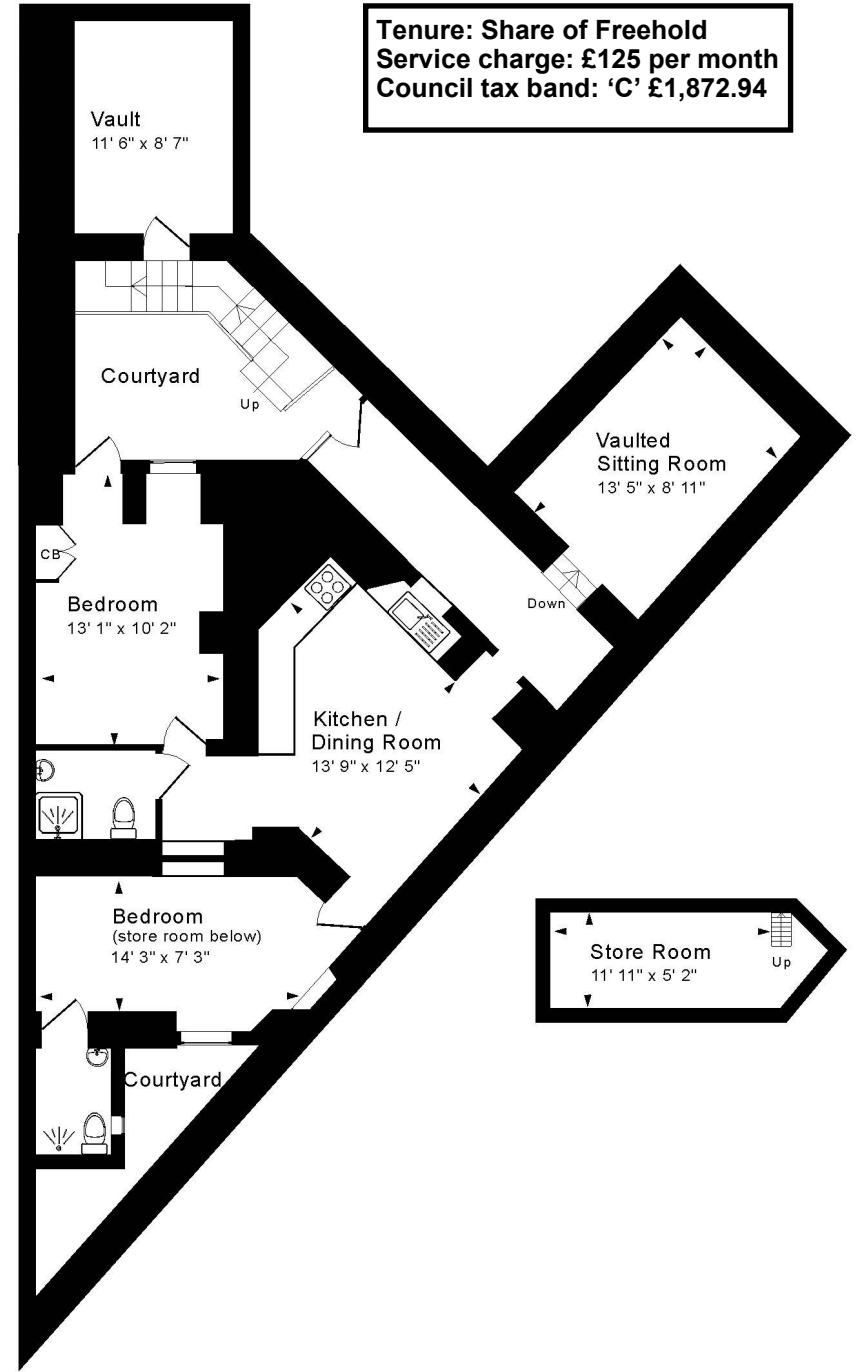
further external unconverted vault

LOCATION

The apartment occupies a most convenient position in the heart of the city, superbly situated adjacent to Pulteney Bridge, Laura Place and Great Pulteney Street. The vast number of shops, restaurants and other amenities that the centre of Bath has to offer are within a very short, level stroll, whilst the tranquility of Henrietta Park, Parade and Sydney Gardens (with its children's play park, tennis courts and access to delightful walks along the Kennet and Avon Canal) are also close at hand.







Tenure: Share of Freehold
Service charge: £125 per month
Council tax band: 'C' £1,872.94

Garden Level

Approx. Gross Internal Floor Area 910 Sq. Ft. / 85 Sq. M
 Excludes Vault, Courtyard and Store Room.
 For identification purposes only. Not to scale. Copyright Jemesis Ltd 2024