

whiteley helyar



1,590 ft²



3 double
bedrooms



bathroom & WC



residents permit
available

Guide Price £750,000

Ground Floor Rear Maisonette, 8 Upper Church Street, Bath, BA1 2PT

Ground Floor Rear Maisonette, 8 Upper Church Street, Bath, BA1 2PT

DESCRIPTION

An excellent ground floor maisonette with a small courtyard garden in this highly sought after location adjacent to Royal Crescent. Contained within a magnificent Grade II* Listed Georgian Town House, the apartment offers almost 1600 square feet of well presented and spacious accommodation.

ACCOMMODATION

large communal reception hall
3 double bedrooms
stunning living room
utility room
gas fired heating

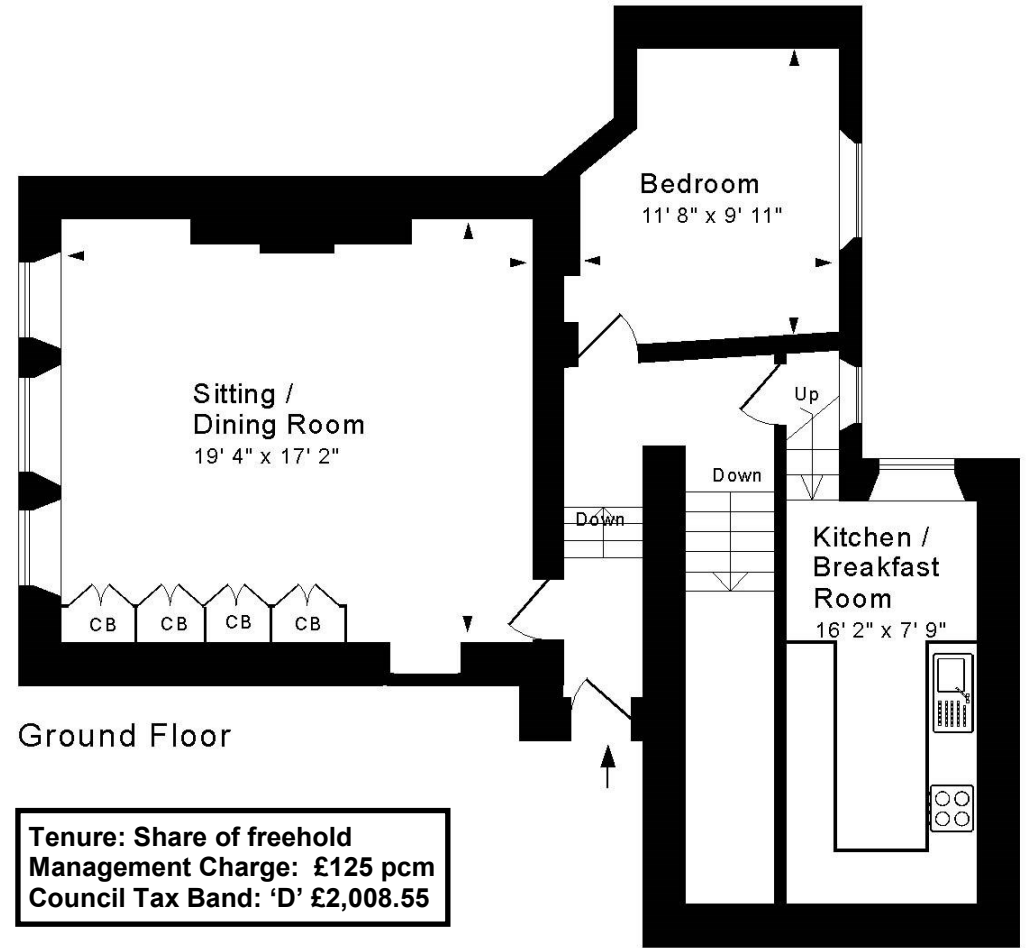
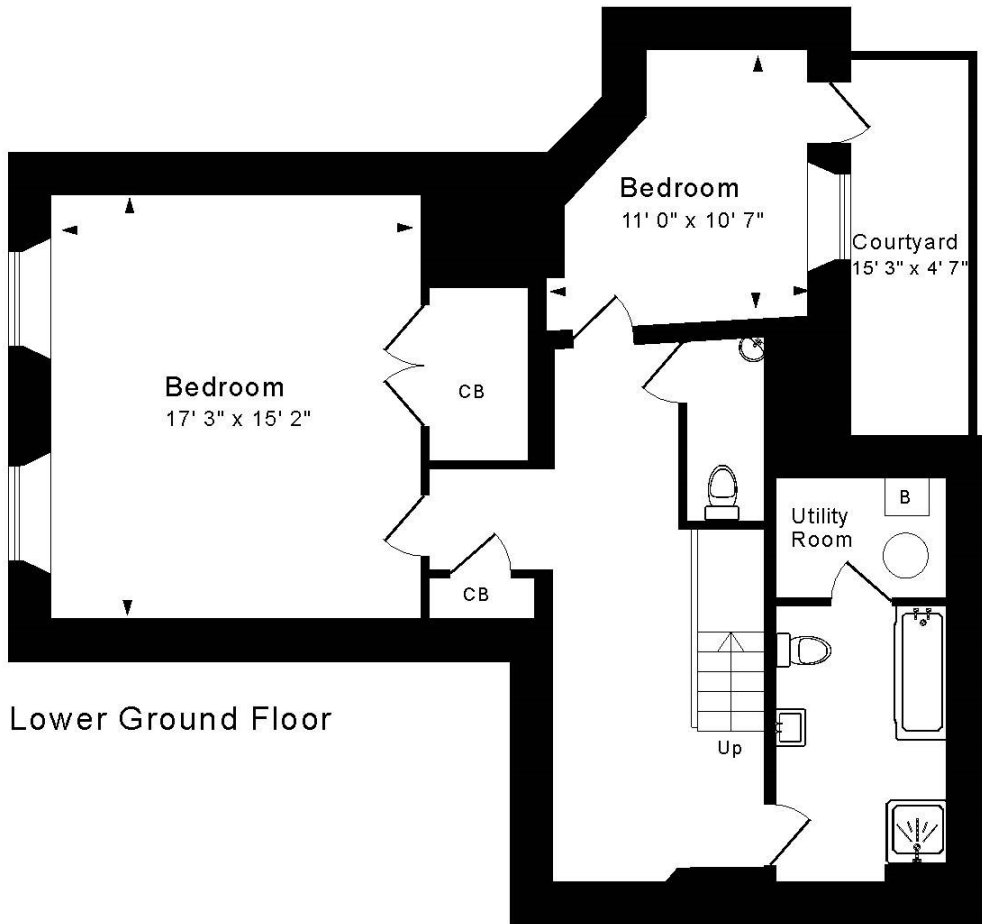
private hallway & lower hall
bathroom and separate WC
kitchen/ breakfast room
small courtyard
residents parking permit available

LOCATION

The apartment occupies a wonderful position on the corner of Upper Church Street and Catherine Place. It is next to the Royal Crescent and the Royal Victoria Park (with its Botanical Gardens, extensive children's play areas, café, tennis courts and golf). Shops, galleries and restaurants in Margaret's Buildings and Brock Street are very close by, whilst the numerous amenities in the very centre of Bath are within a short walk.







Approx. Gross Internal Floor Area 1,590 Sq. Ft. / 148 Sq. M
 Includes Conservatories. Excludes Garages, Porches etc. unless stated
 For identification purposes only. Not to scale. Copyright Jemesis Ltd 2023
 Drawing Number:172-0675
 Lower Rear Maisonette, 8 Upper Church Street, Bath, BA1 2PT.

