

whiteley helyar



584 ft²



2 bedrooms



2 bathrooms



underground
parking space

Guide Price

£325,000

4 Victoria Mansions, 7 Northampton Street, Bath, BA1 2SN

DESCRIPTION

A light and bright first floor apartment served by a lift in a modern block, purpose-built in 1996 to match the adjacent elegant Georgian townhouses. The property is located in this sought after and central location, enjoys a pleasing aspect and view to the rear and, rarely for a flat in the centre of Bath, a private parking space in the underground garage.

ACCOMMODATION

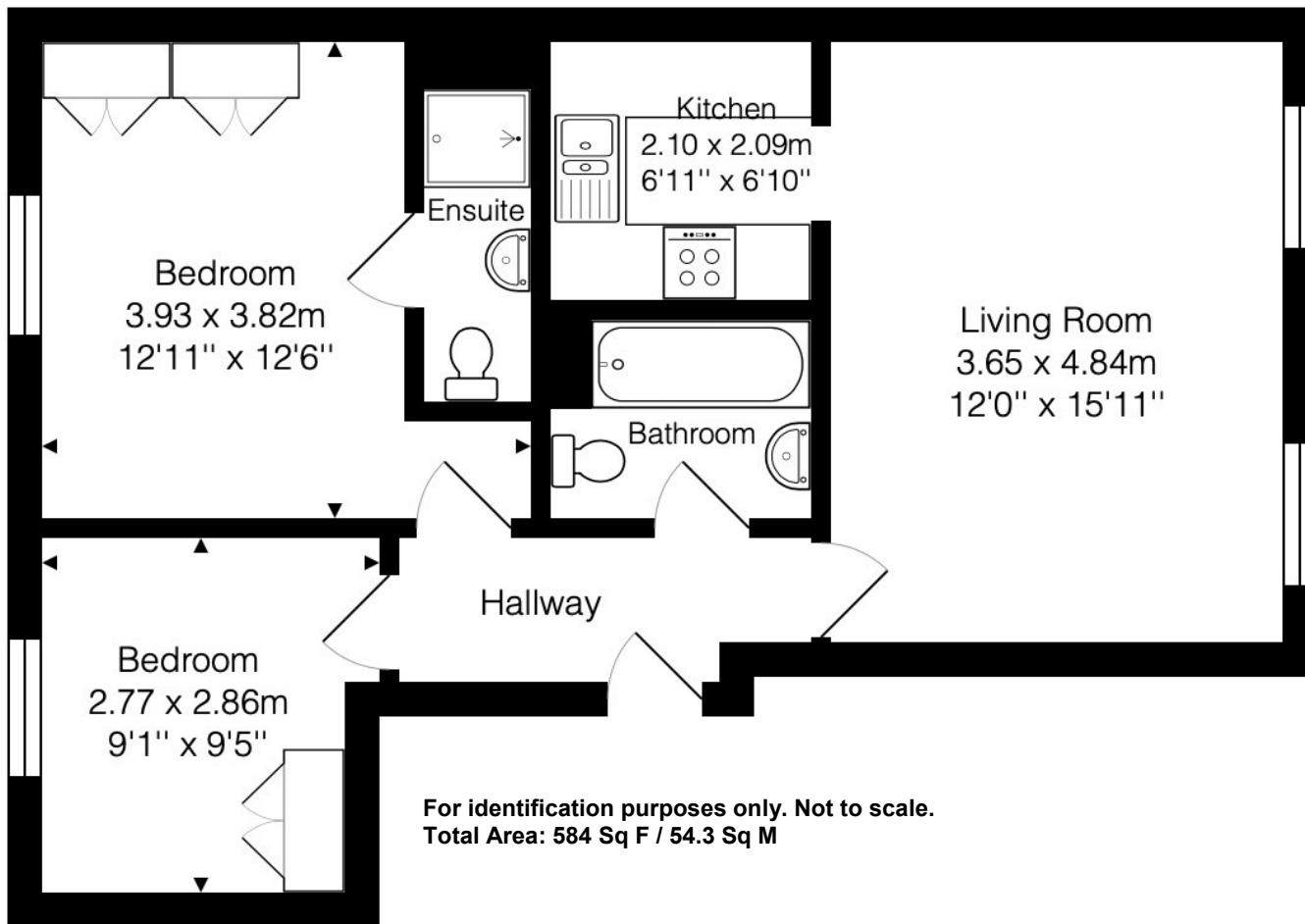
2 bedrooms
bathroom
ensuite shower room
living room
kitchen
gas fired heating
private CAR PARKING SPACE in the secure underground garage

LOCATION

Victoria Mansions stands in a most convenient and popular road. It is close to Royal Victoria Park (with its Botanical Gardens, extensive children's play areas, tennis courts, café and golf), whilst the numerous shops, galleries, restaurants and amenities in Margaret's Buildings, Brock Street, Julian Road and the very centre of Bath are all within a short walk. Swift access to the M4 is also available without having to cross Bath.







Tenure: Share of freehold
 Management charge - £175 pcm
 Council tax band: 'E' - £2,454.89

Energy Efficiency Rating		
	Current	Potential
Very energy efficient - lower running costs		
(92+)		
A		
(81-91)		
B		
(69-80)		
C		
(55-68)		
D		
(39-54)		
E		
(21-38)		
F		
(1-20)		
G		
Not energy efficient - higher running costs		
England & Wales	74	83
	EU Directive 2002/91/EC	

