

whiteley helyar



825 ft²



3 bedrooms



2 bathrooms



garage

Guide Price £675,000

4 Circus Place, Bath, BA1 2PG

A rare opportunity to acquire a well presented, charming end terrace mews house with a garage and a roof terrace in a most sought after, central and quiet location.

ACCOMMODATION

3 bedrooms
bathroom & en-suite shower room
large living room
kitchen
gas fired heating & extensive double glazing
roof terrace
garage

EXTERNALLY

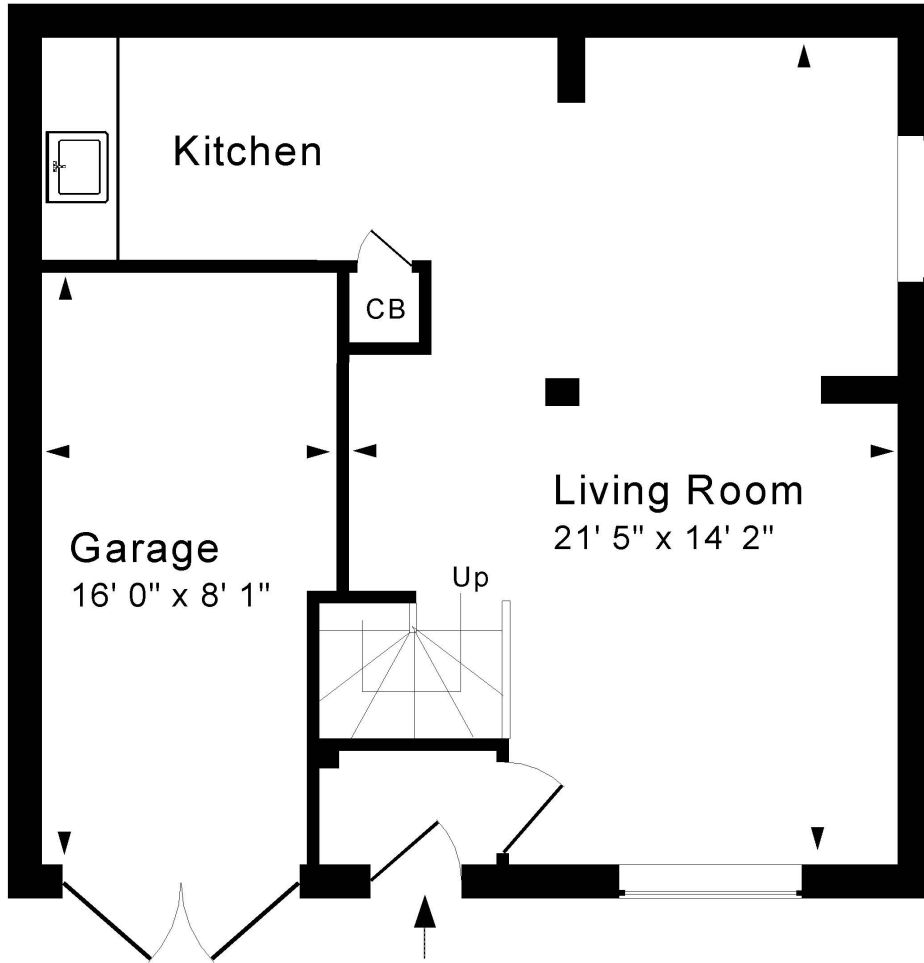
Enclosed private roof terrace and single garage.

LOCATION

Standing quietly behind The Circus, the house occupies a most convenient, select and highly sought after position. It is just a very short walk from the vast selection of shops, galleries and restaurants both in the heart of the city and in the pedestrianised Margaret's Buildings, whilst the fabulous Royal Victoria Park (with its Botanical Gardens, extensive children's play area, tennis courts, pitch and putt and crazy golf) is also extremely close by.







Ground Floor

Approx. Gross Internal Floor Area 825 Sq. Ft. / 77 Sq. M

Excludes Garage & Terrace

For identification purposes only. Not to scale.

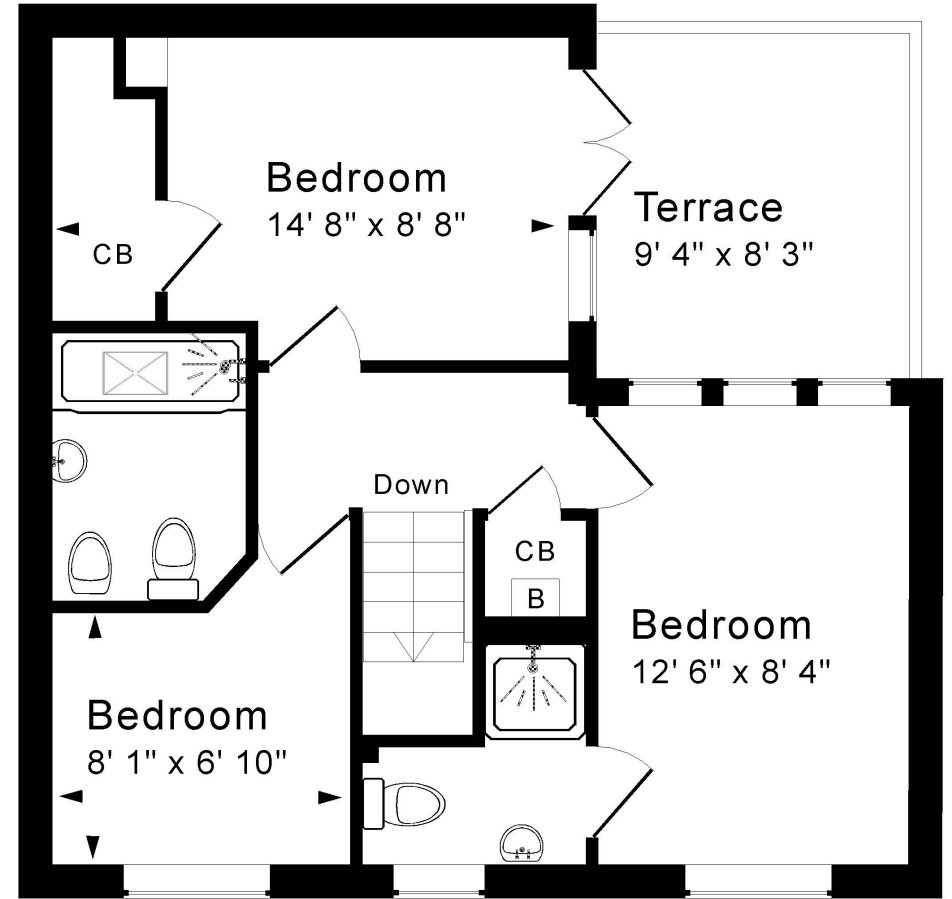
Drawing Number: 172-0595

4 Circus Place, Bath, BA1 2PG.

Tenure: Freehold
Council tax band: 'E' £2,454.89



Copyright Jemesis Ltd 2023



First Floor

Energy Efficiency Rating		Current	Potential
<i>Very energy efficient - lower running costs</i>			
(92 plus)	A		
(81-91)	B		84
(69-80)	C		
(55-68)	D		
(39-54)	E	57	
(21-38)	F		
(1-20)	G		
<i>Not energy efficient - higher running costs</i>			
England & Wales		EU Directive 2002/91/EC	

