

whiteley helyar



825 ft²



2 bedrooms



bathroom



street
parking

Guide Price £375,000

Flat 5, 16 Grosvenor Place, Bath, BA1 6AX

A stunning two bedroom, second floor period conversion apartment with panoramic southerly views over Kensington Meadows towards Bathampton. In this most attractive of Georgian terraces on the western approach to the city centre, the flat is beautifully presented, with contemporary kitchen and bathroom, and wonderfully light living spaces.

ACCOMMODATION

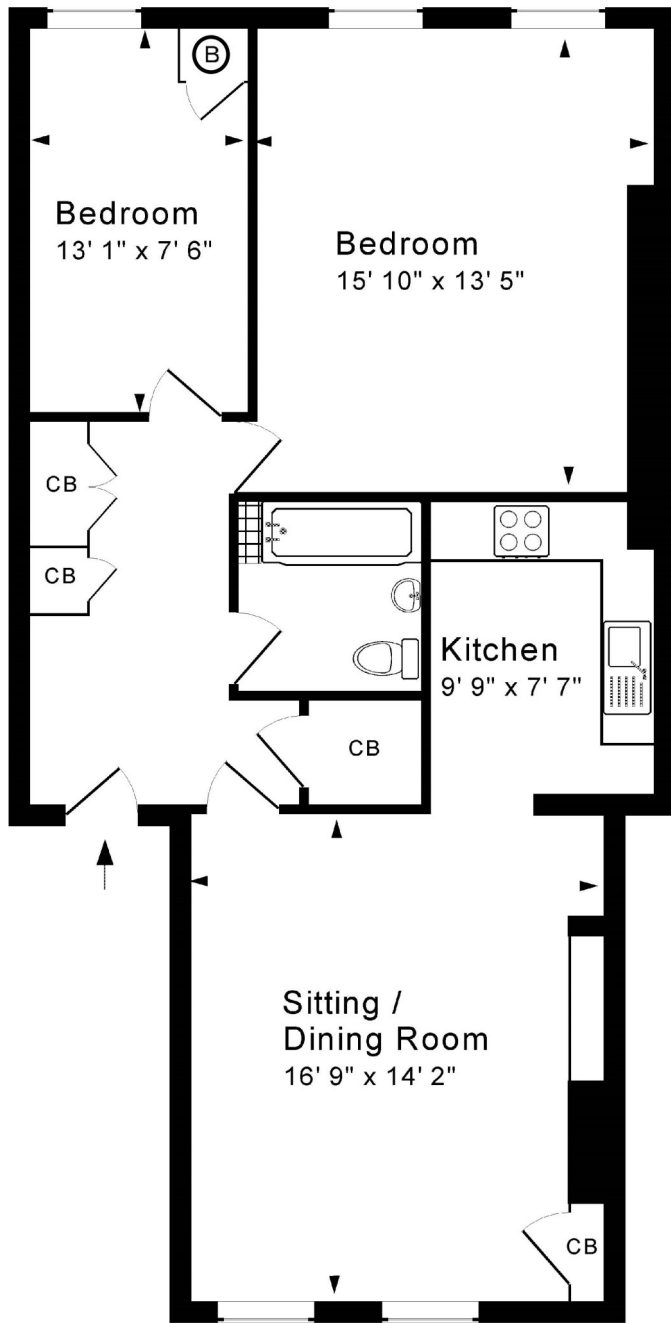
entrance hall with storage cupboards
impressive sitting/dining room with wonderful period detail
well-appointed kitchen
two bedrooms with southerly views towards Bathampton
modern bathroom

LOCATION

The apartment occupies a popular and handy position, peacefully situated close to the excellent range of shops and amenities in Larkhall. Lovely walks along The River Avon and across Kensington Meadows are very close at hand (as is access onto the cycle path), yet the centre of Bath is only a mile or so level walk away. There is a very frequent bus service into the centre of Bath, whilst easy access to the M4 is available without having to cross the city.







Tenure: Share of freehold
Service charge: £100 Per month
Council tax band: C - £1,785.37



Approx. Gross Internal Floor Area 825 Sq. Ft. / 77 Sq. M
 Includes Conservatories. Excludes Garages, Porches etc. unless stated
 For identification purposes only. Not to scale. Copyright Jemesis Ltd 2023
 Drawing Number:172-0607
 Flat 5, 16 Grosvenor Place, Bath, BA1 6AX.