

whiteley helyar



1,582 ft²



4 bedrooms



bathroom and
shower room



on street

Guide Price £700,000

92 High Street, Bathford, Bath, BA1 7TH

A charming Georgian (built circa 1792 and not Listed) terraced house with later additions, recently refurbished to a high standard. The property stands in the heart of this most sought after village and enjoys a lovely semi-rural view in front across the allotments and to the hills beyond. Vacant with 'no onward chain'.

ACCOMMODATION

4 bedrooms
sitting room
kitchen/breakfast room
vaulted store room

bathroom & separate shower room
large family/dining room
study
gas fired heating and extensive double glazing

EXTERNALLY

The house stands in super gardens (about 80' in length) to the rear, facing about South. They are enclosed, mainly laid to lawn with a large paved sun terrace, mature shrubs, bushes, apple and pear trees. Timber shed, a water tap, outside lighting and power.

LOCATION

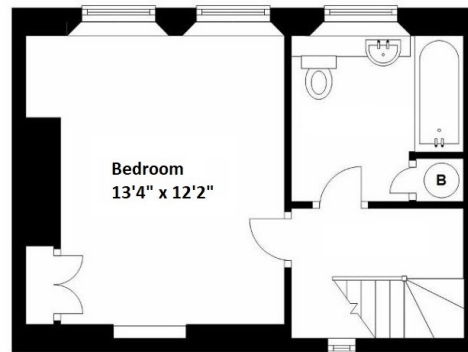
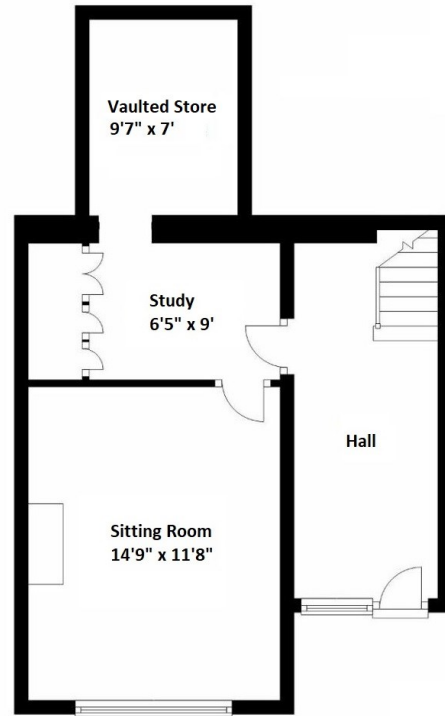
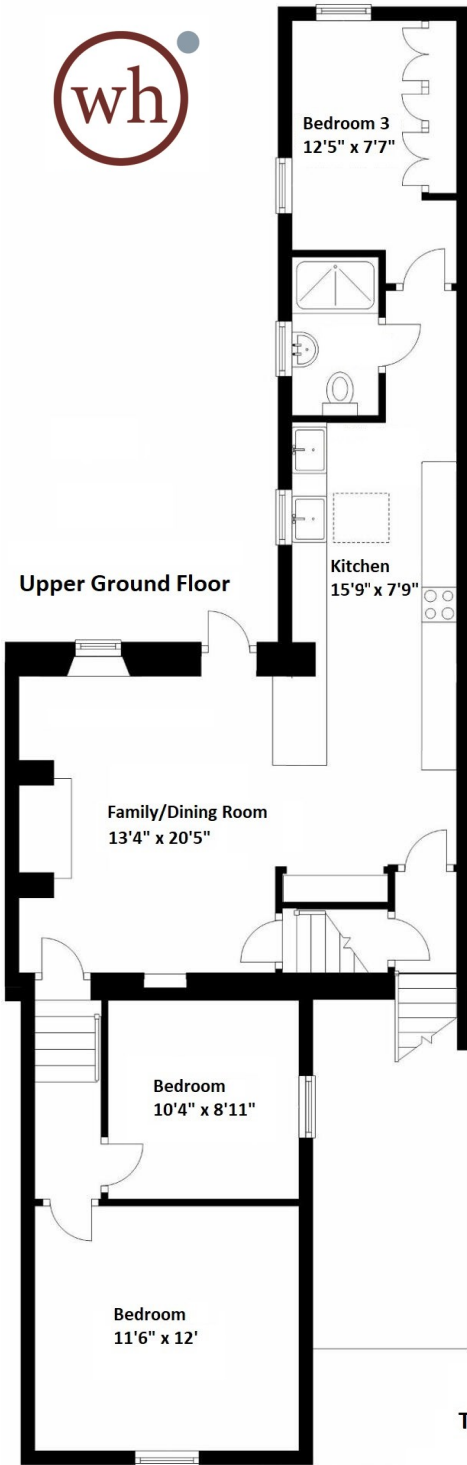
Most conveniently situated in this highly sought after location, 92 High Street is within easy walking distance of the various amenities in the village (including a community shop/café, hair salon, pub, frequent bus service, 'outstanding' primary school, children's playground, rugby and cricket clubs and a church). Wonderful walks are very close to hand, either in the nearby open countryside, along the river or up in the woodland at Brown's Folly - yet the city centre is just 3½ miles away.

DIRECTIONS

From The Crown pub at Bathford, continue up Bathford Hill. 92 High Street will be found on your right after about 1/3 mile, just after Chapel Row and opposite the gate to the allotments.







Tenure: Freehold
Council Tax Band: 'C' £1,814.07

For identification purposes only. Not to scale.

Total area: approximately 1,582 sq ft (147 Sq meters)



Energy Efficiency Rating		Current	Potential
Very energy efficient - lower running costs			
(92 plus)	A		
(81-91)	B		
(69-80)	C		78
(55-68)	D	57	
(39-54)	E		
(21-38)	F		
(1-20)	G		
Not energy efficient - higher running costs			
England & Wales		EU Directive 2002/91/EC	

