

whiteley helyar



720 ft²



double bedroom



bathroom



*residents parking
permit*

Guide Price £425,000

Flat 2, 5 Lansdown Place West, Bath, BA1 5EZ

A beautifully renovated first floor apartment in one of the most sought-after locations in the city. The cleverly designed kitchen sits within the impressive reception room, from which you can enjoy panoramic views over the city, whilst the stylish bedroom benefits from a range of fitted wardrobes. No onward chain.

ACCOMMODATION

impressive reception room, with a large hand built shelving unit and wonderful views
newly fitted kitchen with integrated appliances including SMEG range cooker.

double bedroom with extensive fitted wardrobes

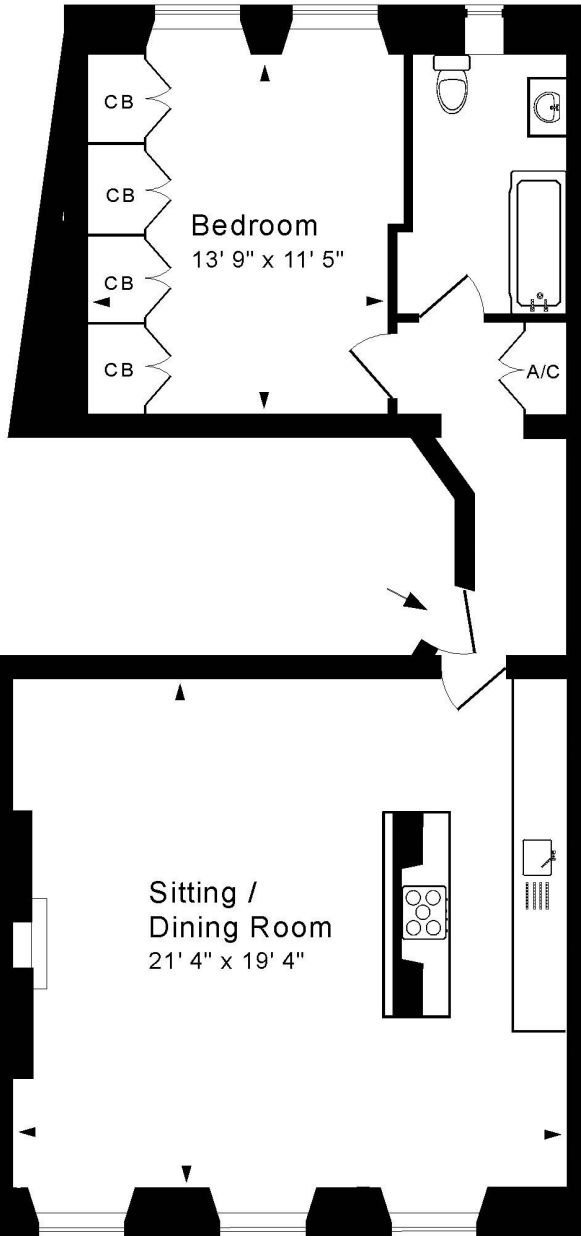
contemporary bathroom

LOCATION

The apartment occupies a most convenient position on the city's prime Northern slopes. In a 'wing' attached to one of the city's famous crescents, the apartment looks over a lawn which is frequently used to graze sheep. It is less than a mile from (and well served by buses to) the city centre - with its countless shops and amenities. There is also easy access to the M4 without having to cross Bath.







Tenure: Share of freehold
Length of lease: Residue of 999 years from 1983
Service charge: £750pa



First Floor

Approx. Gross Internal Floor Area 720 Sq. Ft. / 67 Sq. M
Includes Conservatories. Excludes Garages, Porches etc. unless stated
For identification purposes only. Not to scale. Copyright Jemesis Ltd 2024
Drawing Number:172-0688
Flat 2, 5 Lansdown Place West, Bath, BA1 5EZ.

