



**Francis Stuart**

Sales • Lettings • Investments

## TFF, 19 Percy Terrace

Guide Price £90,000

1 1 1



\*\*\*Guide Price: £90,000-£100,000\*\*\*A WELL PRESENTED 1 DOUBLE BEDROOM TOP FLOOR FLAT with a LARGE FAMILY BATHROOM (bedroom size) and 1 PARKING SPACE in the POPULAR AREA of LIPSON, PLYMOUTH.

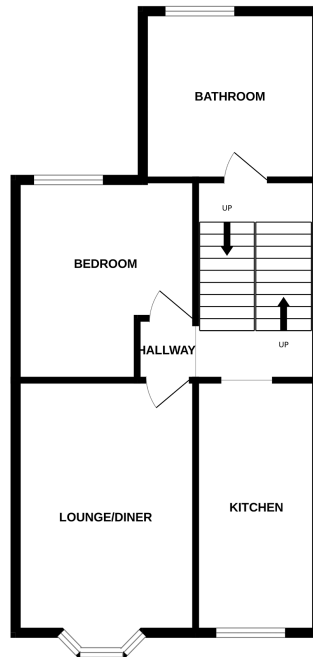
40 Mannamead Road, Mutley, Plymouth, PL4 7AF

01752 710047 | [www.francis-stuart.co.uk](http://www.francis-stuart.co.uk) | [selling@francis-stuart.co.uk](mailto:selling@francis-stuart.co.uk)

## Key Features

- Top Floor Flat
- Large Family Bathroom (Bedroom Size)
- Council Tax Band A
- Double Glazing
- Great Investment or FTB
- 1 Double Bedroom
- 1 Private Parking Space
- Share of Freehold
- Gas Central Heating
- Popular Location and Area

GROUND FLOOR



Whilst every attempt has been made to ensure the accuracy of the floorplan contained here, measurements of doors, windows, rooms and any other items are approximate and no responsibility is taken for any error, omission or mis-statement. This plan is for guidance purposes only and should be used as such by any prospective purchaser. The services, systems and appliances shown have not been tested and no guarantee as to their operability or efficiency can be given.  
Made with Metropix ©2023