



HENRY  **WILTSHIRE**

www.henrywiltshire.co.uk

Henry Wiltshire Limited Company Registration No. 07120440 VAT Registration No. 994 397 354

Registered Office: 2 Laybourne House, Admirals Way, Canary Wharf, London, United Kingdom E14 9UH

The Riverside, Derwent Street, Salford, M5

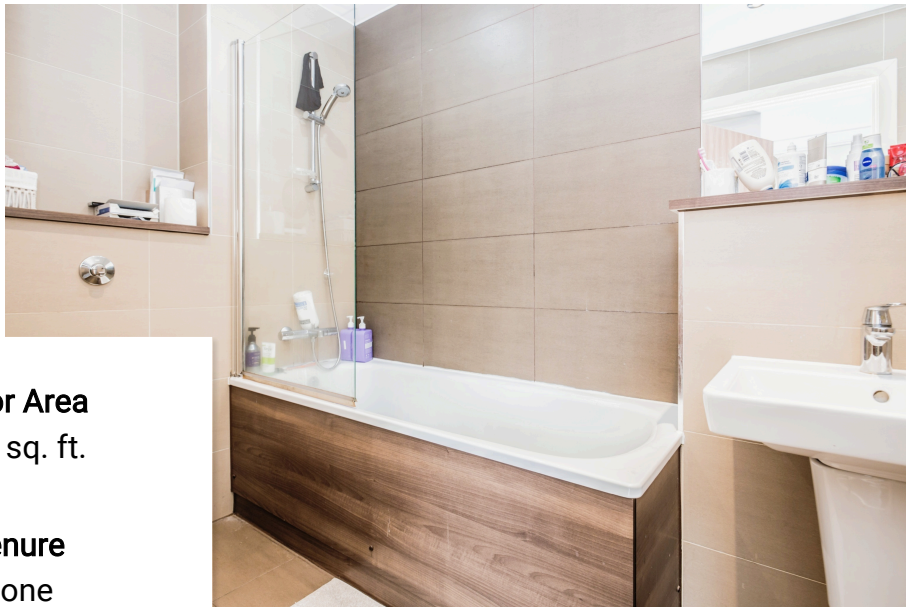
Guide Price £239,000

🛏️ 2 🚗 2



****INVESTMENT OPPORTUNITY. TENANTED UNTIL MAY 2023 WITH A RENTAL INCOME OF £1,100 PER MONTH | £13,200 PER ANNUM** EWS1 Available - Mortgage Buyers Welcome! A well-presented, two double bedroom apartment positioned on the 10th floor with allocated parking and private balcony.**



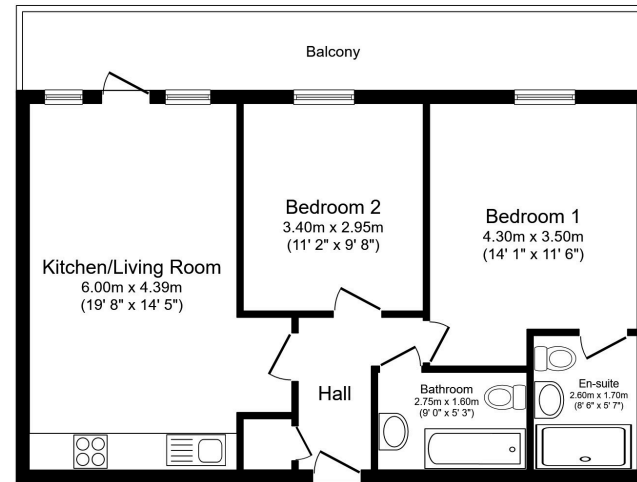
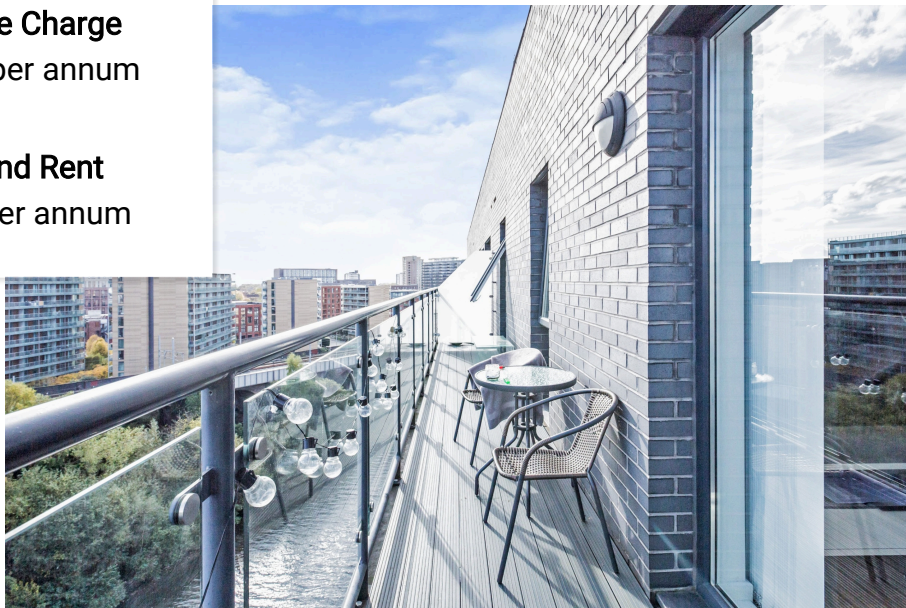


Floor Area
643 sq. ft.

Tenure
None

Service Charge
£1332 per annum

Ground Rent
£300 per annum



Total floor area 59.7 sq.m. (643 sq.ft.) approx.

This floor plan is for illustrative purposes only. It is not drawn to scale. Any measurements, floor areas (including any total floor area), openings and orientation are approximate. No details are guaranteed, they cannot be relied upon for any purpose and they do not form part of any agreement. No liability is taken for any error, omission or misstatement. A party must rely upon its own inspection(s).
Plan produced for Henry Wiltshire. Powered by www.focalagent.com

Energy Efficiency Rating

	Current	Potential
<i>Very energy efficient - lower running costs</i>		
(92 plus) A		
(81-91) B		
(69-80) C		
(55-68) D		
(39-54) E		
(21-38) F		
(1-20) G		
<i>Not energy efficient - higher running costs</i>		
England & Wales	EU Directive 2002/91/EC	

UK Offices | Canary Wharf - E14 | Nine Elms - SE1 | Royal Docks - E16 | Bow - E3 | Hayes, Middlesex - UB3 | Manchester - M2

International Offices | Dublin | Abu Dhabi | Hong Kong | Singapore

