



18 Colerne Street, Ettingshall

£210,000

🛏️ 2 🚿 1 🚗 1

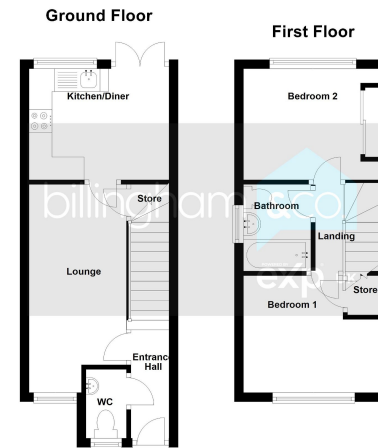
- MODERN (2019) SEMI DETACHED
- CLOSE TO LOCAL SHOPS AND AMENITIES
- GOOD-SIZED LOUNGE
- CONTEMPORARY STYLED BATHROOM
- ALLOCTAED PARKING AREA FOR TWO CARS
- IDEAL STARTER HOME
- TWO DOUBLE BEDROOMS
- FABULOUS KITCHEN DINER TO REAR
- SUPERB LOW MAINTENANCE REAR GARDEN
- MOVE-IN READY



SUPER STARTER HOME HAS WOW FACTOR Located within a NEW BUILD ESTATE close to a host of local SHOPS AND AMENITIES, this fabulous SEMI-DETACHED house MUST be viewed to be fully appreciated. Ideal as a STARTER HOME for those looking to take their first steps on the property ladder, this BEAUTIFULLY PRESENTED property comprises MOVE-IN READY accommodation to include entrance hall, guest WC, GOOD-SIZED LOUNGE, fabulous KITCHEN DINER with French doors opening to the rear, TWO DOUBLE BEDROOMS and a CONTEMPORARY STYLED BATHROOM. Add a superb, LOW MAINTENANCE REAR GARDEN and ALLOCATED PARKING SPACES and this lovely home ticks all the boxes. FREEHOLD - EPC=B - COUNCIL TAX = B

PLEASE CALL TO BOOK YOUR PERSONAL VIEWING OR BOOK ONLINE 24/7 VIA OUR PERSONAL WEBSITE





Score	Energy rating	Current	Potential
92+	A		97 A
81-91	B	82 B	
69-80	C		
55-68	D		
39-54	E		
21-38	F		
1-20	G		

Sales 01384 444 004 / Lettings 01384 445 075
 hello@billingham.properties
 www.billingham.properties



Agents Note: Whilst every care has been taken to prepare these particulars, they are for guidance purposes only. All measurements are approximate and are for general guidance purposes only and whilst every care has been taken to ensure their accuracy, they should not be relied upon and potential buyers are advised to recheck the measurements.