



39 Cradley Road Netherton,

Offers In Region Of £210,000

🛏 2 🚿 1 🛋 1

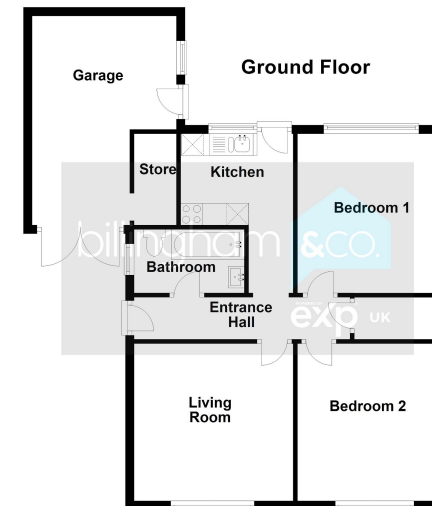
- DETACHED BUNGALOW
- VERY WELL PRESENTED THROUGHOUT
- GOOD-SIZED LOUNGE
- PRIVATE, LOW MAINTENANCE REAR GARDEN
- DRIVEWAY PARKING
- IDEAL FOR FIRST TIMERS AND DOWNSIZERS
- TWO DOUBLE BEDROOMS
- KITCHEN AND BATHROOM
- SIDE GARAGE
- MUST BE SEEN!



FANTASTIC TWO BED DETACHED BUNGALOW. Ideal for both DOWNSIZERS and FIRST TIMERS alike, this VERY WELL PRESENTED bungalow is handily located close to a HOST OF LOCAL AMENITIES, to include SHOPS, SCHOOLS and GOOD PUBLIC TRANSPORT LINKS.. Set behind DRIVEWAY PARKING leading to a SIDE GARAGE, the property has accommodation to briefly comprise entrance hall, FITTED KITCHEN, good sized LOUNGE, TWO DOUBLE BEDROOMS and an ATTRACTIVE BATHROOM. Outside, there is a PLEASANT, LOW MAINTENANCE REAR GARDEN offering the ideal space to relax during the summer months. FREEHOLD - COUNCIL TAX= B - EPC=D

CALL TO BOOK YOUR PERSONAL VIEWING OR BOOK ON-LINE 24/7 VIA OUR WEBSITE





Score	Energy rating	Current	Potential
92+	A		
81-91	B		86 B
69-80	C		
55-68	D	65 D	
39-54	E		
21-38	F		
1-20	G		

Sales 01384 444 004 / Lettings 01384 445 075
 hello@billingham.properties
 www.billingham.properties



Agents Note: Whilst every care has been taken to prepare these particulars, they are for guidance purposes only. All measurements are approximate and are for general guidance purposes only and whilst every care has been taken to ensure their accuracy, they should not be relied upon and potential buyers are advised to recheck the measurements.