



DINSDALE RESIDENTIAL
SALES & LETTINGS

Ochiltree Court Seaton Sluice NE26

Offers Over £115,000

1 1 1



This charming 1-bedroom flat in Seaton Sluice offers a cozy and contemporary living space in a picturesque coastal village. Perfect for singles or couples, this well-maintained property provides modern amenities and easy access to local amenities and the scenic Northumberland coastline.

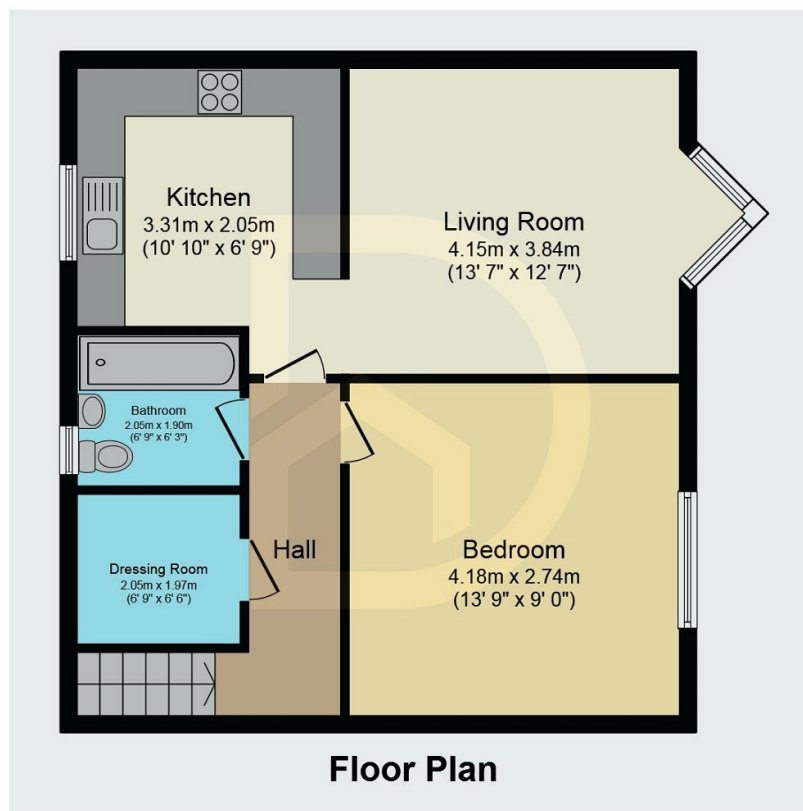


DINSDALE RESIDENTIAL

SALES & LETTINGS

Key Features

- Charming 1 Bedroom Flat
- Spacious Bedroom
- Private Patio/Garden
- Conveniently located near Seaton Sluice harbour
- EPC C rating
- Modern Kitchen
- Walk In Wardrobe
- Bright and Inviting living room with Ample Natural light
- On Street Parking
- Council Tax Band A



Total floor area 62.1 m² (668 sq.ft.) approx

This plan is for illustration purposes only and may not be representative of the property. Plan not to scale. Powered by PropertyBox