



59 Sturdee Road, Milehouse, Plymouth, Devon, PL2 3AT



# Price £220,000



Situated in the popular residential area of Milehouse and within walking distance to the amenities in Stoke Village is this two-bedroom terraced house with a south westerly facing rear courtyard.

The property although is currently 2 bedrooms could be re-modelled to be changed back into 3 bedrooms with some minor alterations. The accommodation on the ground floor comprises of a spacious lounge with a square bay, dining room with plenty of natural light and storage, fitted kitchen with a range of wall and base units, under counter fridge, gas hob and oven and to the rear of the ground floor there is a lovely sunroom with access to the rear enclosed garden.

Stairs lead up to the first floor where there are two generously sized bedrooms and a modern family bathroom. The bathroom has been upgraded by the current owner and comprises of a bath with a shower over, wash hand basin and WC.

Externally the rear walled south westerly facing courtyard is the perfect space for BBQing or alternatively could be utilised for off road parking with the relevant work and permission granted.

The property has the benefit of a cellar under the entire house which is approx. 5 ft in height and is perfect for storage.

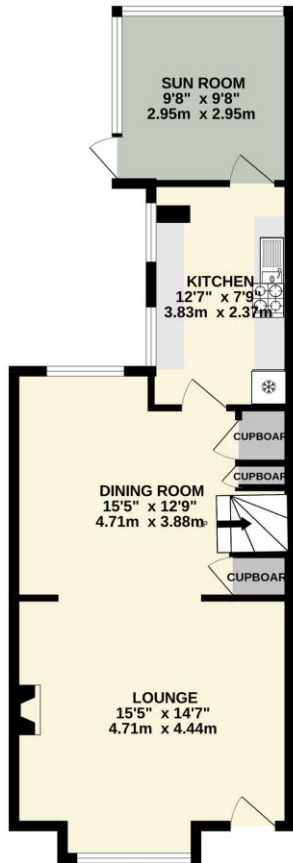


To view this property call Lang Town & Country Estate Agents on **01752 256000**

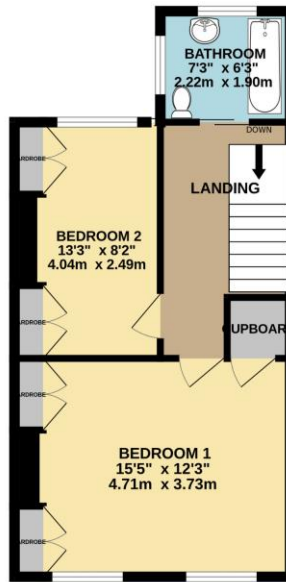
[www.langtownandcountry.com](http://www.langtownandcountry.com)



GROUND FLOOR  
578 sq.ft. (53.7 sq.m.) approx.



1ST FLOOR  
430 sq.ft. (39.9 sq.m.) approx.



TOTAL FLOOR AREA : 1007 sq.ft. (93.6 sq.m.) approx.

Whilst every attempt has been made to ensure the accuracy of the floorplan contained here, measurements of doors, windows, rooms and any other items are approximate and no responsibility is taken for any error, omission or mis-statement. This plan is for illustrative purposes only and should be used as such by any prospective purchaser. The services, systems and appliances shown have not been tested and no guarantee as to their operability or efficiency can be given.  
Made with Metropix ©2024



Lang Town & Country  
6 Mannamead Road  
Plymouth  
PL4 7AA  
Tel: 01752 256000  
Email: [property@langtownandcountry.com](mailto:property@langtownandcountry.com)  
[www.langtownandcountry.com](http://www.langtownandcountry.com)

Lang Town & Country endeavour to ensure the accuracy of property details produced and displayed, we have not tested any apparatus, equipment, fixtures, fittings or services and so cannot verify that they are connected, in working order or fit for purpose. A buyer must check the availability of any property and make an appointment to view before embarking on any journey to see a property.

