



we are
morfittsmith

47, Queenswood Road,
Sheffield,
S6 1RR



we are  morfitt

An attractive End Townhouse in a popular location. Situated in a quiet cul-de-sac, with surrounding green space and key road access.





Why We Love It

It's a beautiful town house with lovely stone work and lots of window space. We also love that it has a balcony, it's the perfect finishing touch!

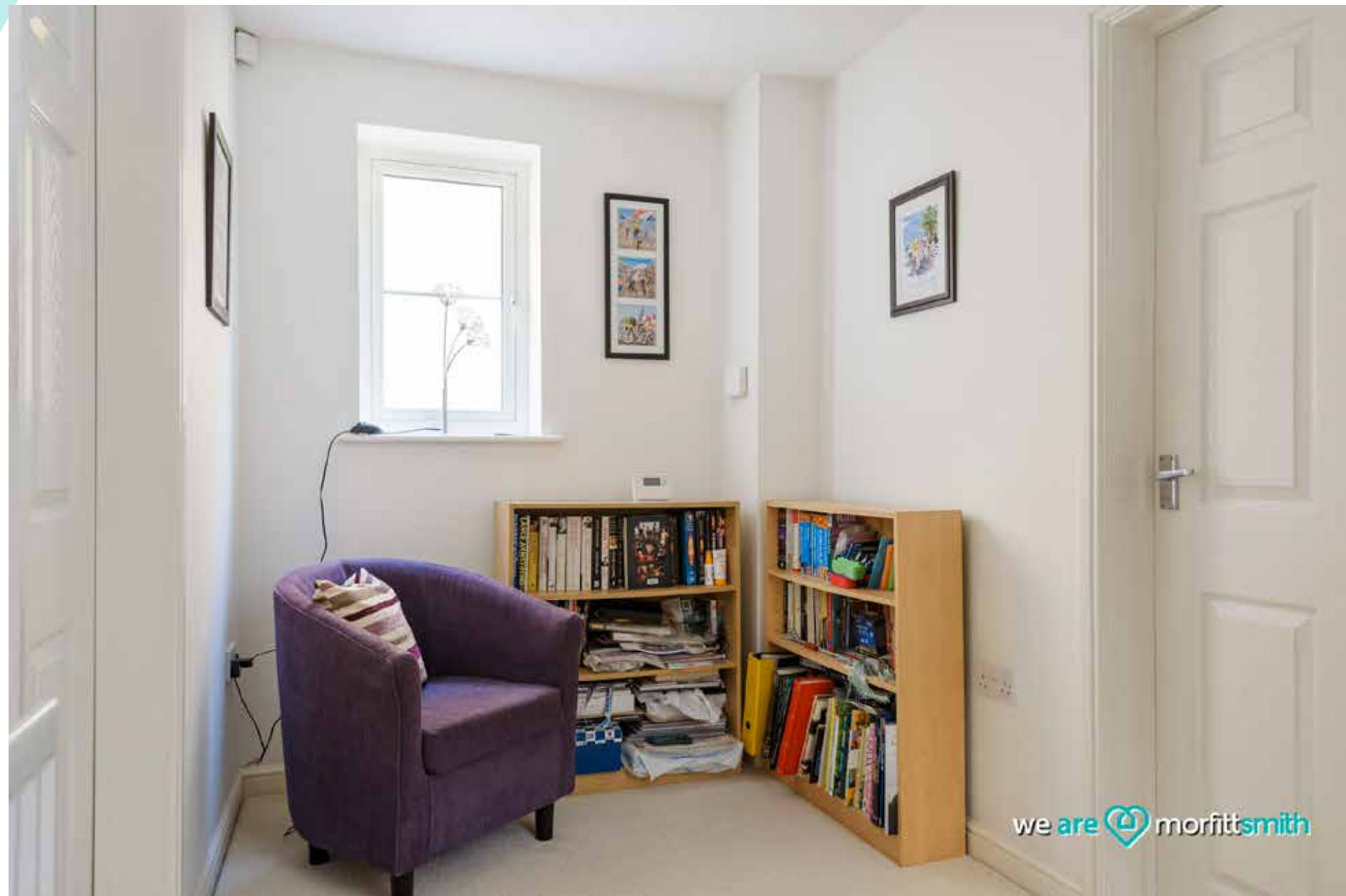
Why You'll Love It

Queenswood Road is an attractive end town house with driveway, balcony and tiered rear garden. The tiered back garden is a good size for furniture making it the ideal summer spot for socialising and BBQ's. You could even have a little green house! On the ground floor we have two large Dining and reception rooms. One would make an ideal separate lounge or even an office. On the first floor is the kitchen and the family lounge, both rooms boasting french doors, with the lounge opening onto the balcony. The second floor houses the three bedrooms, all of a good size with the main bedroom having its own ensuite. Completing the floor plan is the 3 piece bathroom suite, with shower over the bath. The house is well presented throughout with neutral tones. Making adding your own stamp to the property all the easier.

Queenwood road is situation in a quiet cul-de-sac, with surrounding green space and fantastic key road access. Hillsborough, Stockbridge and other popular spots are just a short trip away. For the nature lovers, Queenswood road is positioned near to Loxley Commons, Hillsborough Park and even the Peak District.



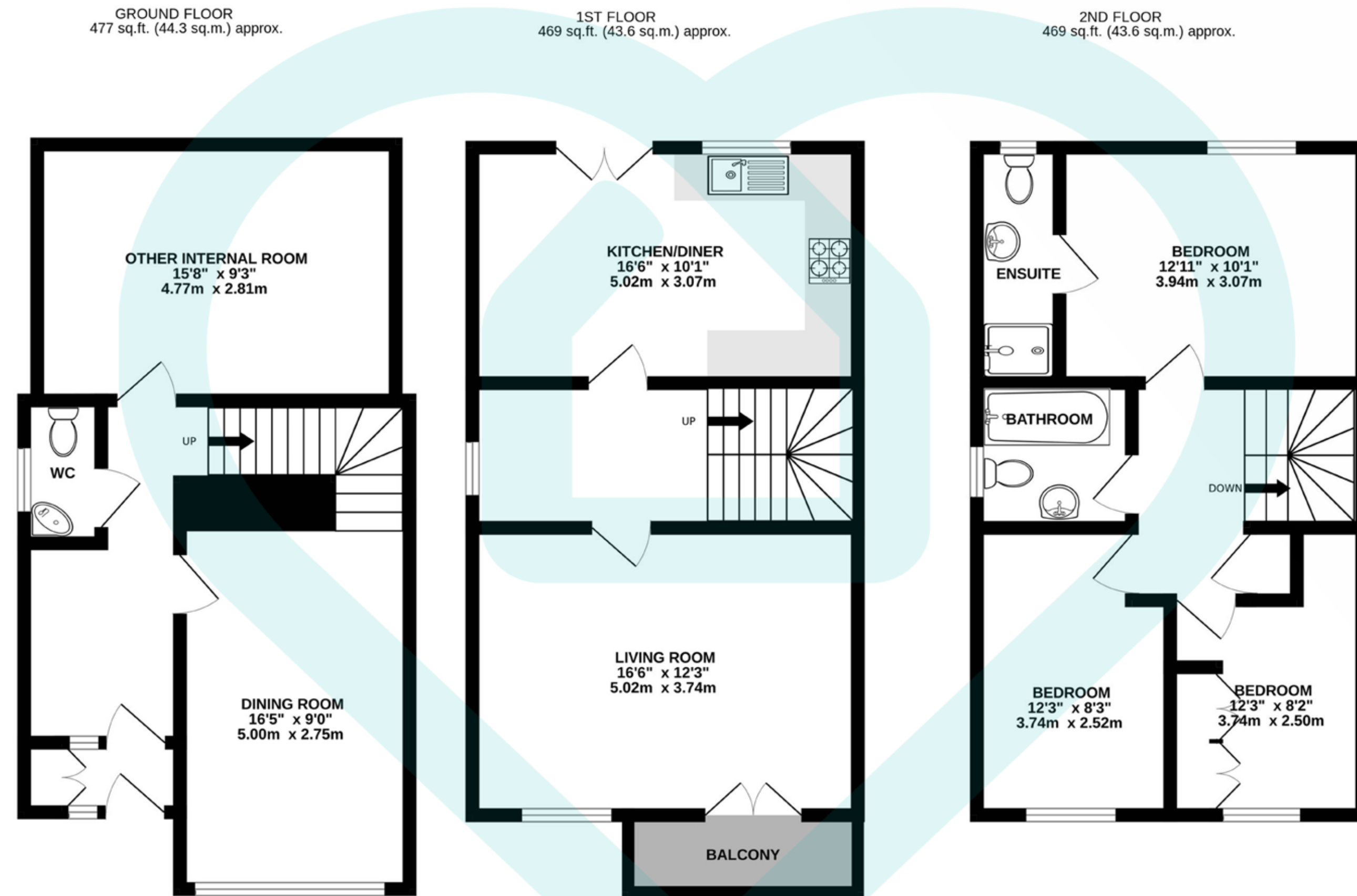












TOTAL FLOOR AREA : 1415 sq.ft. (131.5 sq.m.) approx.

This floor plan is for illustrative purposes only. All measurements and layouts are approximations and do not necessarily capture the precise specifications of the property. No responsibility is taken for any error, omission, or misstatement. We always recommend viewing in person to confirm the exact floor plan of a property. Made with Metropix.





The MorfittSmith Building,
67 Middlewood Road,
Sheffield, S6 4GX



0114232 1764



www.morfittsmith.co.uk



sales@morfittsmith.co.uk



lettings@morfittsmith.co.uk



newhomes@morfittsmith.co.uk



@morfittsmith



@morfittsmith



MorfittSmithEstate&LettingAgent



morfittsmith



sales | lettings | new homes
