



Bank House, Loxley Road, Loxley

£550,000

🛏️ 4 🚿 2 🚪 2

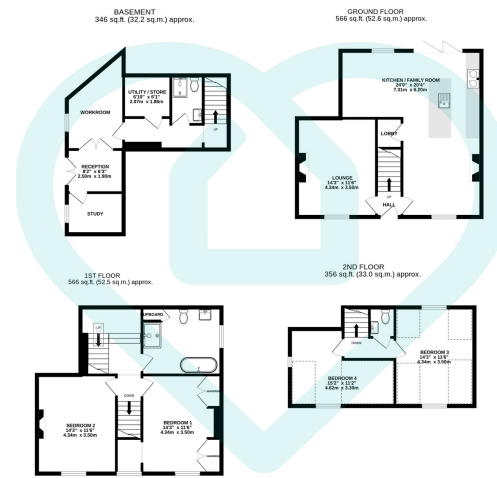


- 4 Double Bedrooms
- Open plan Kitchen / Family room with White Marbled Island and Courtyard Access
- Impeccably Decorated
- Timeless and Stylish 4-Piece Bathroom Suite
- Gated Property with Drive, Terrace, Private Side Garden, and Rear Courtyard
- Versatile Basement level Work/Office Space with Separate Access
- Bespoke kitchen with high end appliances
- Large Living Space
- Two Bedrooms on Second Floor with WC Room
- Proximity to Green Spaces, Schools, Hillsborough, and City Centre





we are morfittsmith

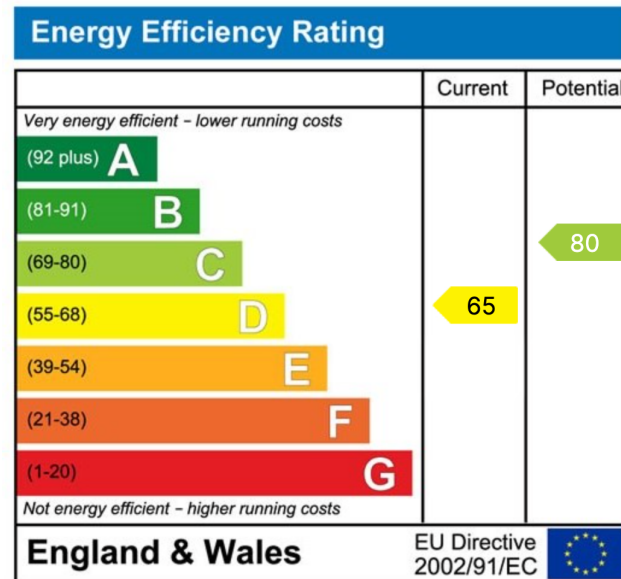


TOTAL FLOOR AREA: 1834 sq.ft. (170.4 sq.m.) approx.

This floor plan is for illustrative purposes only. All measurements and layouts are approximations and do not necessarily capture the precise specifications of the property. No responsibility is taken for any error, omission, or misstatement. We always recommend viewing in person to confirm the exact floor plan of a property. Made with Metropix.



Discover a captivating residence at Loxley Road, an exquisite 4-bedroom home meticulously designed across four floors, offering a harmonious blend of sophistication, versatility and luxury. This distinguished property stands as a testament to refined living, boasting a remarkable usable work/office space in the basement, currently fashioned as a beauty salon, providing a unique opportunity for professional use with separate access, ensuring privacy and convenience.



Sales | Lettings | New Homes

VAT Reg Number: 191 3588 84
 Company Reg Number: 08610489
 Company Reg Address: 67 Middlewood Road, Hillsborough, Sheffield, S6 4GX.

The MorfittSmith Building
 67 Middlewood Road
 Hillsborough
 Sheffield
 S6 4GX

Get in touch - arrange an appointment

0114 232 1764
 sales@morfittsmith.co.uk
 lettings@morfittsmith.co.uk
 newhomes@morfittsmith.co.uk
 www.morfittsmith.co.uk

@MorfittSmith
 @MorfittSmith
 MorfittSmith
 Estate & Letting Agent