

DAVID CHARLES

ESTATE AGENTS • VALUERS • SURVEYORS
THE ESTATE OFFICE • 34 HIGH STREET • PINNER • MIDDLESEX HA5 5PW
TELEPHONE 020 8866 0222 • FAX 020 8868 3544
WEBSITE www.david-charles.co.uk • E-MAIL pinner-sales@david-charles.co.uk

WAKEHAMS HILL, PINNER VILLAGE, HA5 3BQ



PRICE....£649,000 FREEHOLD

This spacious (1834 sq ft) four bedroom, three bathroom family home is situated on a cul de sac within one of Pinner's most sought after locations within half a mile of Pinner Village and the Metropolitan Line station. The accommodation includes a guest cloakroom, fitted kitchen, L-shaped sitting room, dining room and double glazed conservatory. There are three bedrooms (one en-suite) and a family bathroom. The second floor fourth bedroom is 18' x 14' with an en-suite shower room. The property is fully double glazed and has gas central heating. The side and rear garden is approximately 100 ft in length with a paved patio leading to a main lawn with mature flower, shrub and tree borders. There is a single garage, a carport and an additional parking space. The property is offered with a complete upper chain.

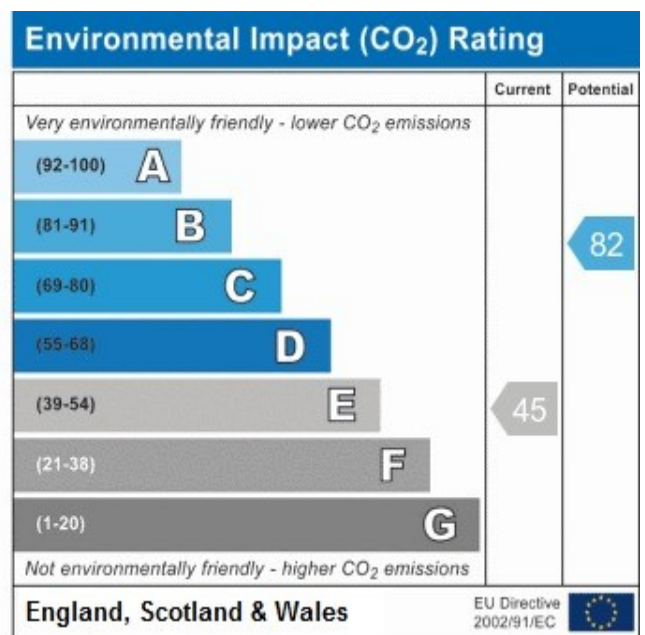
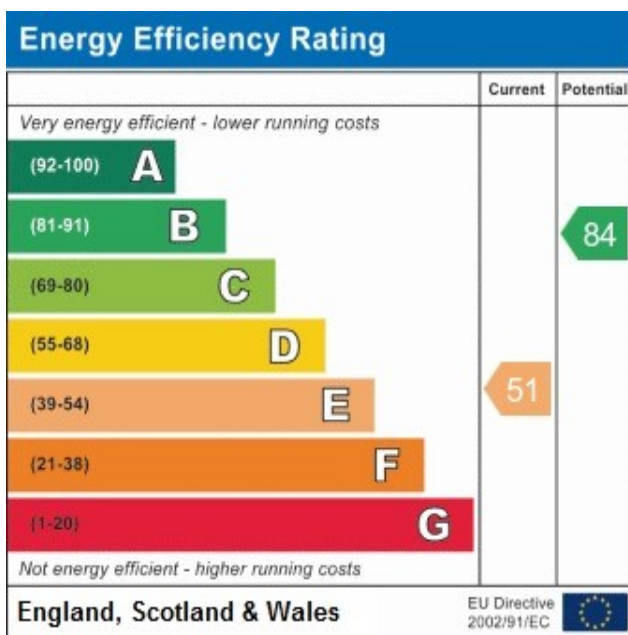
020 8866 0222











COUNCIL TAX

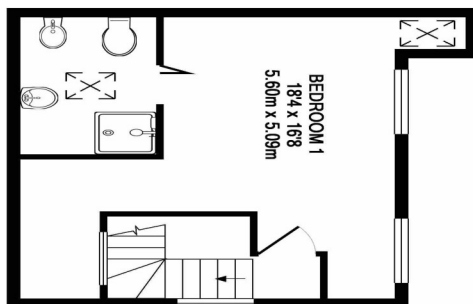
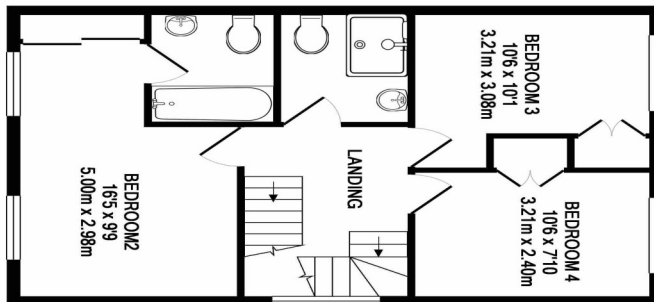
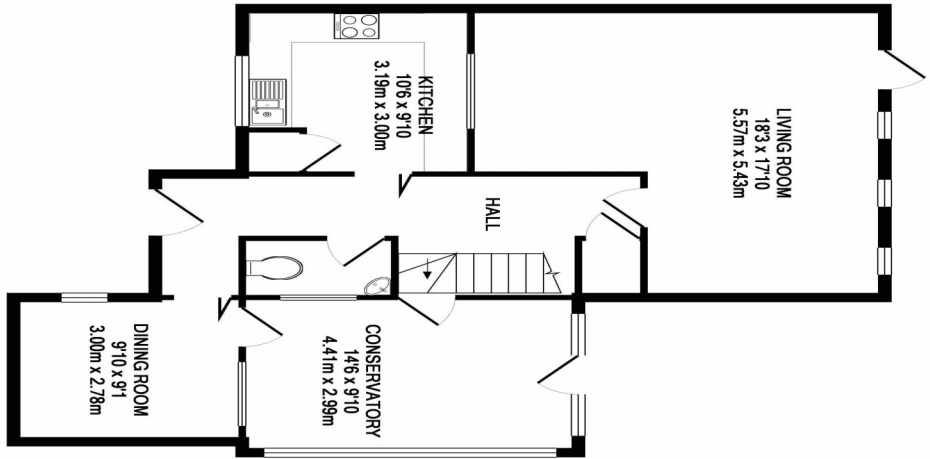
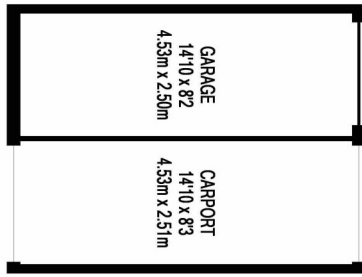
London Borough of Harrow - Band F—£2,439.55

LOCAL SCHOOLS

- St. Johns Fishers Catholic Primary School - 0.37 Miles
- Pinner Park Infant and Nursery - 0.55 Miles
- Pinner Park Primary School - 0.56 Miles
- West Lodge Primary School - 0.76 Miles

LOCAL TRANSPORT

- Pinner Station - 0.7 Miles
- North Harrow - 1.6 Miles



TOTAL APPROX. FLOOR AREA 1834 SQ.FT. (1703 SQ.M.)

Whilst every attempt has been made to ensure the accuracy of the floor plan contained here, measurements of doors, windows, rooms and any other items are approximate and no responsibility is taken for any error, omission, or misstatement. This plan is for illustrative purposes only and should be used as such by any prospective purchaser. The services, systems and appliances shown have not been tested and no guarantee as to their operability or efficiency can be given.

Made with Metropix ©2018

For appointments to view please call David Charles 020 8866 0222

All measurements are taken manually and whilst every care is taken with their accuracy they must be considered approximate and should not be relied upon when purchasing carpets or furniture. No responsibility is taken for any error, omission or misunderstanding in these particulars which do not constitute an offer or contract. Services and appliances have not been tested and therefore no warranty is offered on their operational condition.