

DAVID CHARLES

ESTATE AGENTS • VALUERS • SURVEYORS
THE ESTATE OFFICE • 34 HIGH STREET • PINNER • MIDDLESEX HA5 5PW
TELEPHONE 020 8866 0222 • FAX 020 8868 3544
WEBSITE www.david-charles.co.uk • E-MAIL pinner-sales@david-charles.co.uk

THE RIDGEWAY, NORTH HARROW, HA2 7QL



PRICE...£719,950....FREEHOLD

The property is a 1930's built semi-detached three/four bedroom family house (1422 sq ft/132.10 sq m), that has been extended to the side and rear and refurbished to a very high standard throughout. Features include an attractive original stain glass picture window in the hallway, 15ft living room, a substantial 22ft x 18ft open plan kitchen/breakfast/dining room area with a central workstation/breakfast bar and Bi-fold doors overlooking the 67ft rear garden. There is also a separate utility room, a study/bedroom four and both the ground floor shower room and first floor bath/shower room have underfloor heating. The property also benefits from being sold chain free and recently had planning

020 8866 0222







COUNCIL TAX

London Borough of Harrow - Band E - £2,266.96

LOCAL SCHOOLS

St. John Fisher Catholic Primary School - 0.18 Miles

Longfield Primary School - 0.50 Miles

Nower Hill High School - 0.45 Miles

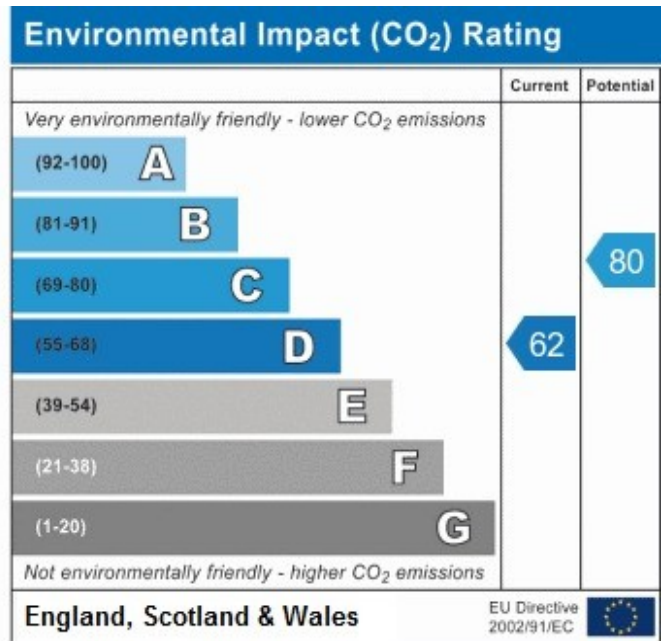
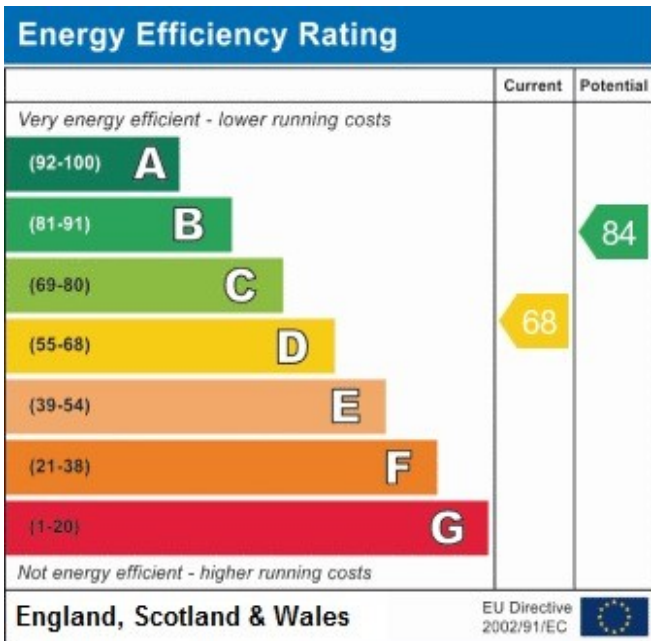
Pinner High School - 0.84 Miles

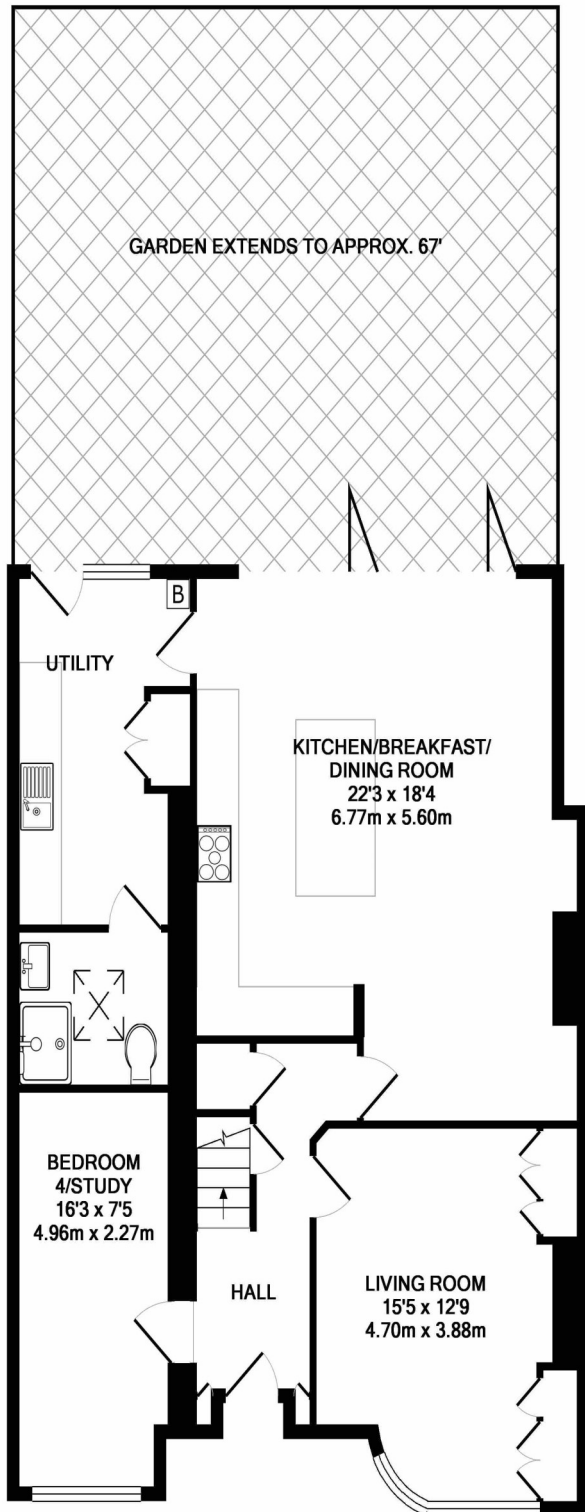
LOCAL TRANSPORT

North Harrow Station (Metropolitan Line) - 0.6 Miles

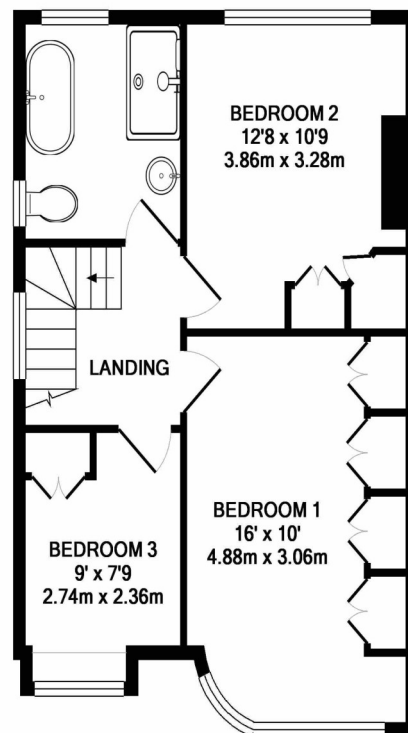
Pinner Metropolitan Line Station (Metropolitan Line) - 0.7 Miles

Rayners Lane (Metropolitan & Piccadilly Line) - 1.0 Miles





GROUND FLOOR
APPROX. FLOOR
AREA 920 SQ.FT.
(85.5 SQ.M.)



1ST FLOOR
APPROX. FLOOR
AREA 501 SQ.FT.
(46.6 SQ.M.)

TOTAL APPROX. FLOOR AREA 1422 SQ.FT. (132.1 SQ.M.)

Whilst every attempt has been made to ensure the accuracy of the floor plan contained here, measurements of doors, windows, rooms and any other items are approximate and no responsibility is taken for any error, omission, or mis-statement. This plan is for illustrative purposes only and should be used as such by any prospective purchaser. The services, systems and appliances shown have not been tested and no guarantee as to their operability or efficiency can be given
Made with Metropix ©2018

For appointments to view please call David Charles 020 8866 0222

All measurements are taken manually and whilst every care is taken with their accuracy they must be considered approximate and should not be relied upon when purchasing carpets or furniture. No responsibility is taken for any error, omission or misunderstanding in these particulars which do not constitute an offer or contract. Services and appliances have not been tested and therefore no warranty is offered on their operational condition.