

DAVID CHARLES

ESTATE AGENTS • VALUERS • SURVEYORS
THE ESTATE OFFICE • 34 HIGH STREET • PINNER • MIDDLESEX HA5 5PN
TELEPHONE 020 8866 0222 • FAX 020 8868 3544
WEBSITE www.david-charles.co.uk • E-MAIL enquiries@david-charles.co.uk

MOSS LANE, PINNER VILLAGE, HA5 3AT



PRICE....£1,650,000 FREEHOLD

This substantial six bedroom detached house (320 Sq M/3447 Sq Ft) was built in the late 1980's to a high standard. It is set on a large plot in one of Pinner's premier lanes, with a substantial rear garden backing onto Halls Farm fields and an open aspect at the front looking down East End Way. The accommodation includes three reception rooms (with one en-suite which would provide ideal accommodation for an elderly relative), an 'eat in' kitchen with granite work tops and a separate utility room. The first floor 19'5 master bedroom benefits from an en-suite bath/shower room, bedroom two has an en-suite bathroom, there are three further double bedrooms and a family bath/shower room. The second floor offers a 20' bedroom with an en-suite dressing room and shower room and would be ideal for an au pair or nanny. Outside the front is mostly block paved providing off street parking for several cars. The large and secluded 100ft plus rear garden has a patio and main lawn with mature tree, hedgerow and plant borders.

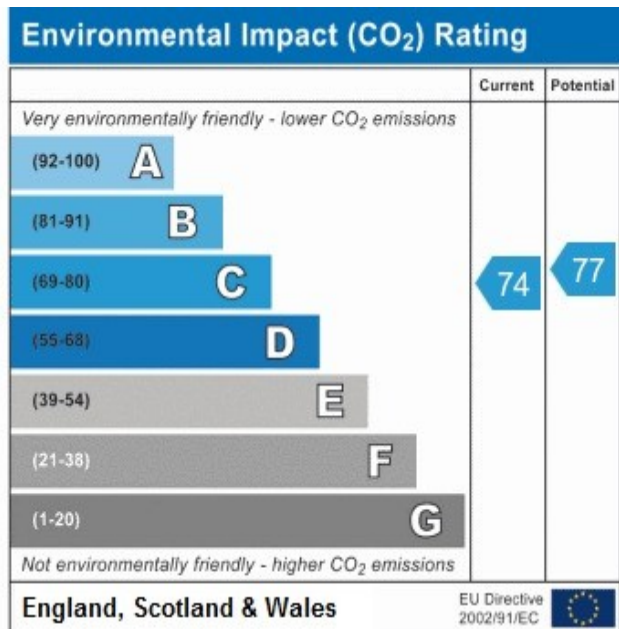
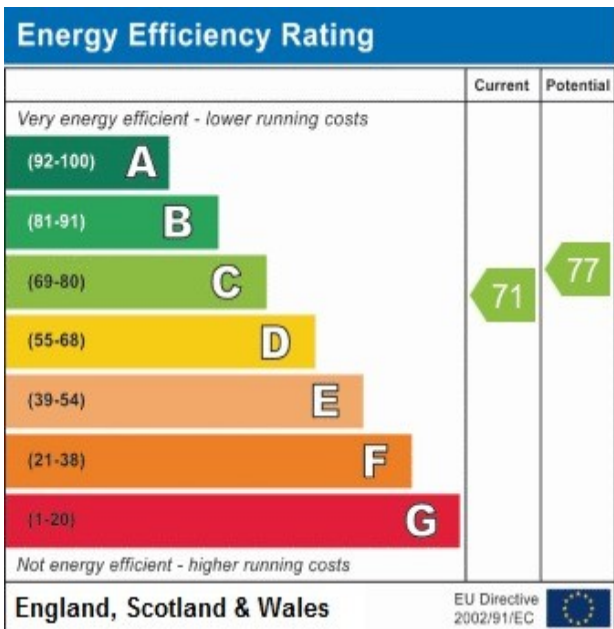
020 8866 0222











COUNCIL TAX

London Borough of Harrow - Band H - £3,709.58

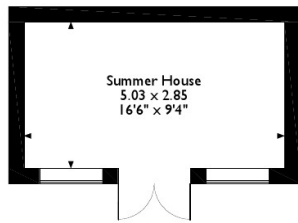
LOCAL SCHOOLS

- Reddiford School - 0.5 Miles
- West Lodge Primary School - 0.68 Miles
- St. John Fishers Primary School - 0.68 Miles
- Pinner Park Primary School - 0.74 Miles
- Pinner Wood School - 0.95 Miles

LOCAL TRANSPORT

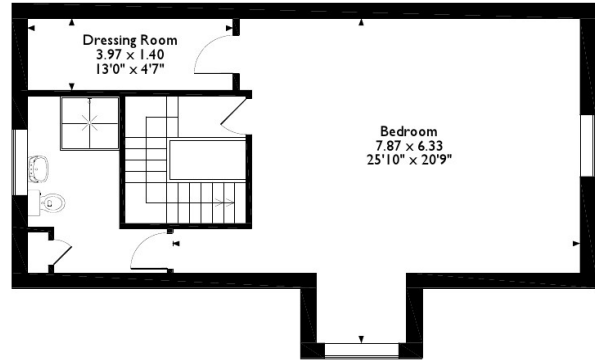
- Pinner Station - 0.8 Miles
- North Harrow - 1.2 Miles

Moss Lane, Pinner
Approximate Gross Internal Area
320 Sq M/3447 Sq Ft



Summer House
5.03 x 2.85
16'6" x 9'4"

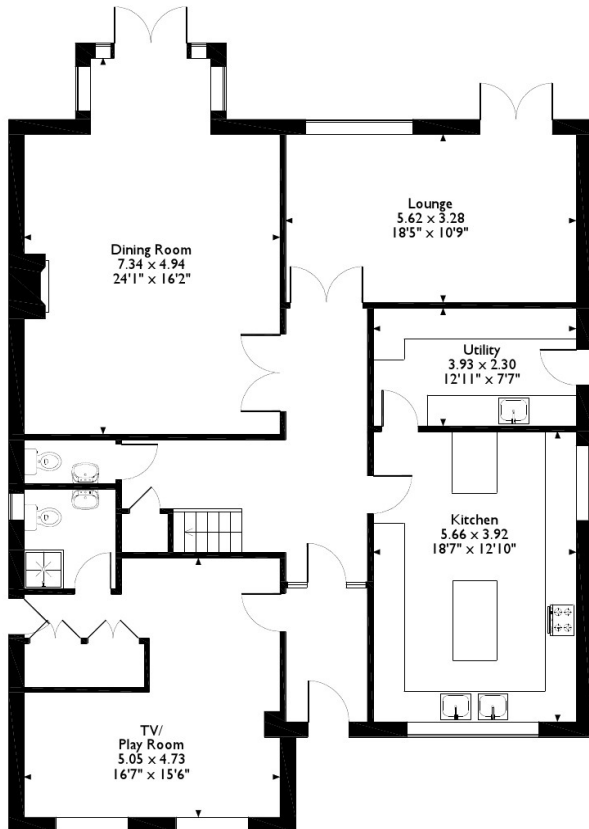
Outbuilding



Dressing Room
3.97 x 1.40
13'0" x 4'7"

Bedroom
7.87 x 6.33
25'10" x 20'9"

Second Floor



Dining Room
7.34 x 4.94
24'1" x 16'2"

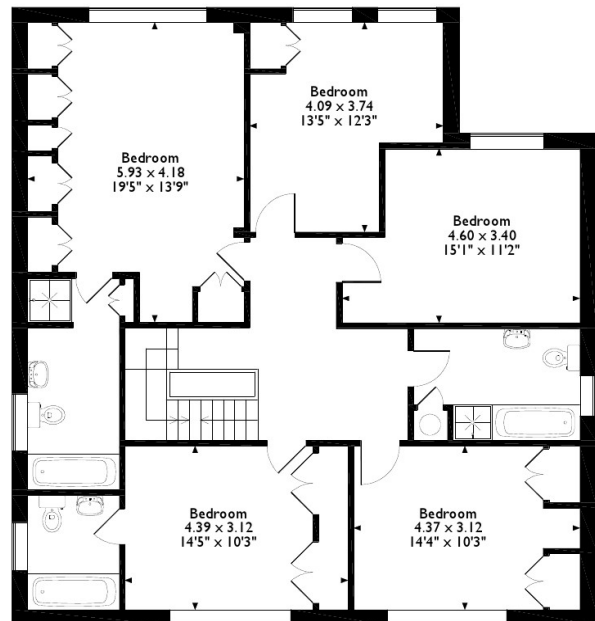
Lounge
5.62 x 3.28
18'5" x 10'9"

Utility
3.93 x 2.30
12'11" x 7'7"

Kitchen
5.66 x 3.92
18'7" x 12'10"

TV/
Play Room
5.05 x 4.73
16'7" x 15'6"

Ground Floor



Bedroom
5.93 x 4.18
19'5" x 13'9"

Bedroom
4.09 x 3.74
13'5" x 12'3"

Bedroom
4.60 x 3.40
15'1" x 11'2"

Bedroom
4.39 x 3.12
14'5" x 10'3"

Bedroom
4.37 x 3.12
14'4" x 10'3"

First Floor

Please note that the location of doors, windows and other items are approximate and this floorplan is to be used for illustrative purposes only. Unauthorized reproduction is prohibited.