

DAVID CHARLES

ESTATE AGENTS • VALUERS • SURVEYORS
THE ESTATE OFFICE • 34 HIGH STREET • PINNER • MIDDLESEX HA5 5PW
TELEPHONE 020 8866 0222 • FAX 020 8868 3544
WEBSITE www.david-charles.co.uk • E-MAIL pinner-sales@david-charles.co.uk

GROVE HILL, HARROW ON THE HILL, MIDDLESEX, HA1 3HE



PRICE ... £1,475,000... FREEHOLD

This attractive 'Arnold Mitchell' designed five bedroom Victorian house (233 Sq M/2507 Sq Ft) is located on a quiet residential road on the lower slopes of Harrow on the Hill. The accommodation offers the perfect balance of character combined with contemporary features, including original fireplaces, cornices, wood flooring and leaded light windows. The accommodation includes two spacious reception rooms, an 'eat in' kitchen, utility room and a large storeroom. The master bedroom has an en-suite bathroom, there are three further double bedrooms, bedroom five and a second family bathroom. Outside the substantial and well stocked rear garden compliments the house, while the front provides parking for several cars, a double length garage, and offer pleasant view over The Grove open space. The property is ideally located on a quiet road within a third of a mile of Harrow on the Hill train station and a five minute walk to the extensive range of restaurants and shopping facilities at the town centre and the top of the hill. Excellent schooling including the world famous Harrow School are also nearby.

020 8866 0222









COUNCIL TAX

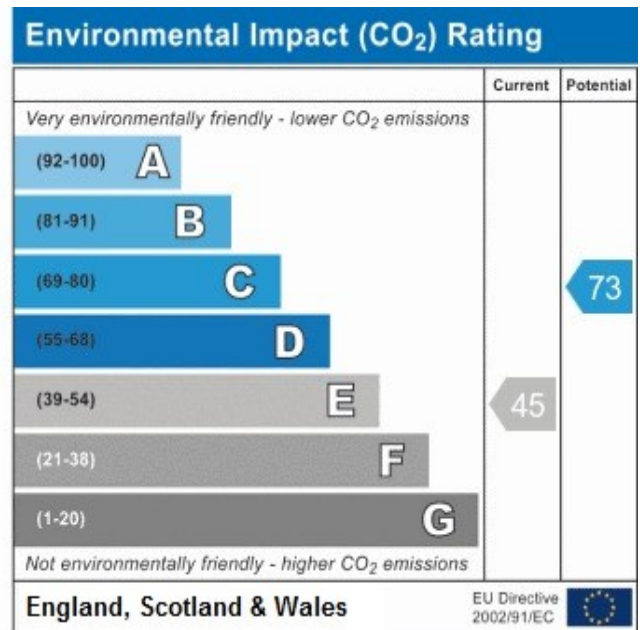
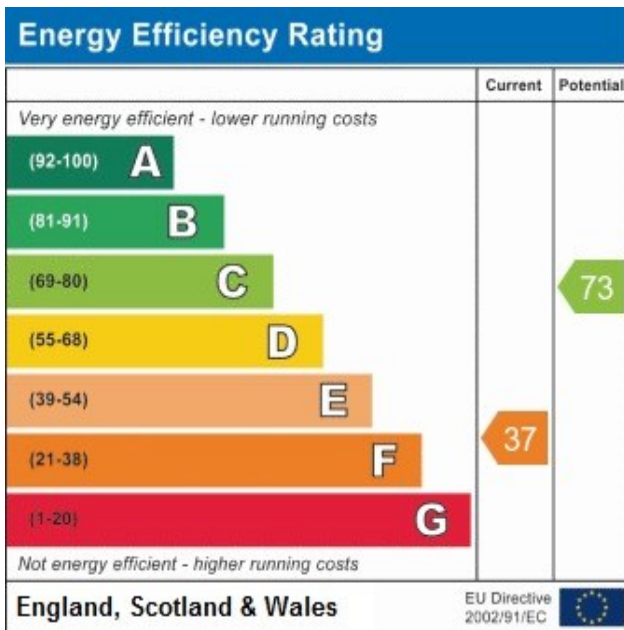
London Borough of Harrow - Band G - £2,974.66

LOCAL SCHOOLS

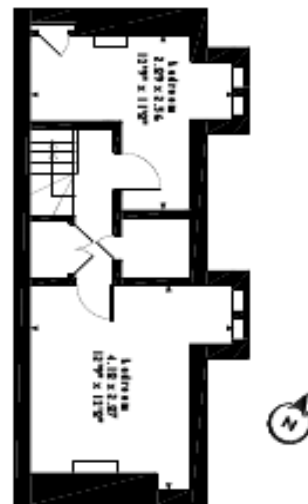
Harrow School - 0.2 Miles
 Harrow High School - 0.5 Miles
 St Anselm's Catholic School - 0.4 Miles
 Roxeth Primary School - 0.9 Miles

LOCAL TRANSPORT

Harrow-On-the Hill Station - 0.3 Miles.



Grove Hill, Harrow-on-the-Hill
 Approximate Gross Internal Area
 233 Sq M/2507 Sq Ft



Please note that the location of doors, windows and other items are approximate and the floor plan is to be used for illustrative purposes only. Unauthorized reproduction is prohibited.

For appointments to view please call David Charles 020 8866 0222

All measurements are taken manually and whilst every care is taken with their accuracy they must be considered approximate and should not be relied upon when purchasing carpets or furniture. No responsibility is taken for any error, omission or misunderstanding in these particulars which do not constitute an offer or contract. Services and appliances have not been tested and therefore no warranty is offered on their operational condition.