

DAVID CHARLES

ESTATE AGENTS • VALUERS • SURVEYORS
THE ESTATE OFFICE • 34 HIGH STREET • PINNER • MIDDLESEX HA5 5PW
TELEPHONE 020 8866 0222 • FAX 020 8868 3544
WEBSITE www.david-charles.co.uk • E-MAIL enquiries@david-charles.co.uk

OLD HALL DRIVE, PINNER, HA5 4SW



PRICE ... £1,100,000 ... FREEHOLD

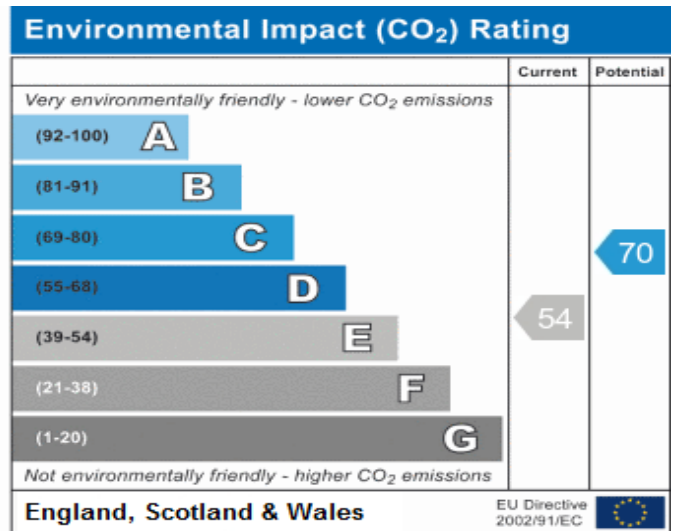
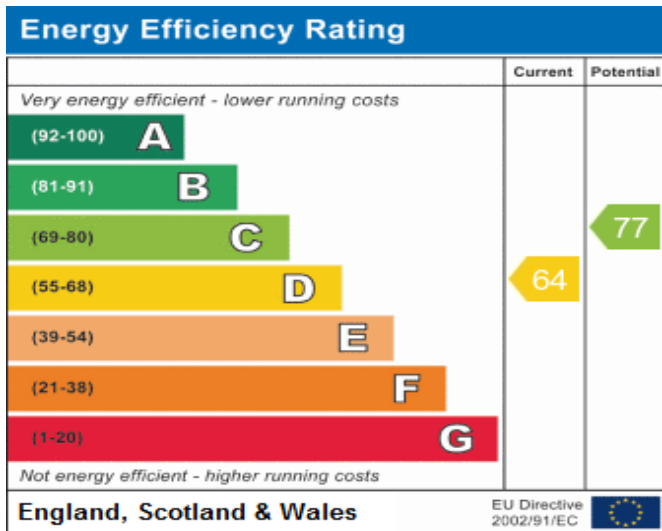
This four bedroom Scandinavian house (2400 Sq Ft/223 Sq M) is surrounded by mature trees on a lakeside setting. It is set on a large plot approached via a pretty flint bridge over Woodridings Brook on a private road. A carriage driveway leads to the house and double width garage. The accommodation including a 19' living room connecting to the separate dining room and a 13' study/media room. There is an 'eat in' kitchen, utility room, storage room and a shower/cloakroom. The first floor master bedroom benefits from an en-suite bathroom and a balcony overlooking the substantial grounds. There are three further double bedrooms and a family shower room. Outside a large patio leads to the landscaped gardens and the lake with its own jetty and viewing deck. Old Hall Drive is an idyllic location just off the Uxbridge Road, within half a mile of Hatch End Broadway offering a large selection of restaurants, shops and the London Overground train station. Pinner village under a mile away offering quaint shops, supermarkets and the Metropolitan line station.











COUNCIL TAX

London Borough of Harrow Council Band G - £2,974.66

LOCAL SCHOOLS

- Grimsdyke Primary School - 0.63 Miles
- Pinner Wood Primary School - 0.65 Miles
- Hatch End High School - 1.07 Miles
- Nower Hill High School - 1.10 Miles

LOCAL TRANSPORT

- Pinner Station (Metropolitan Line) - 1.0 miles
- Hatch End Station (London Overground) - 0.7 miles



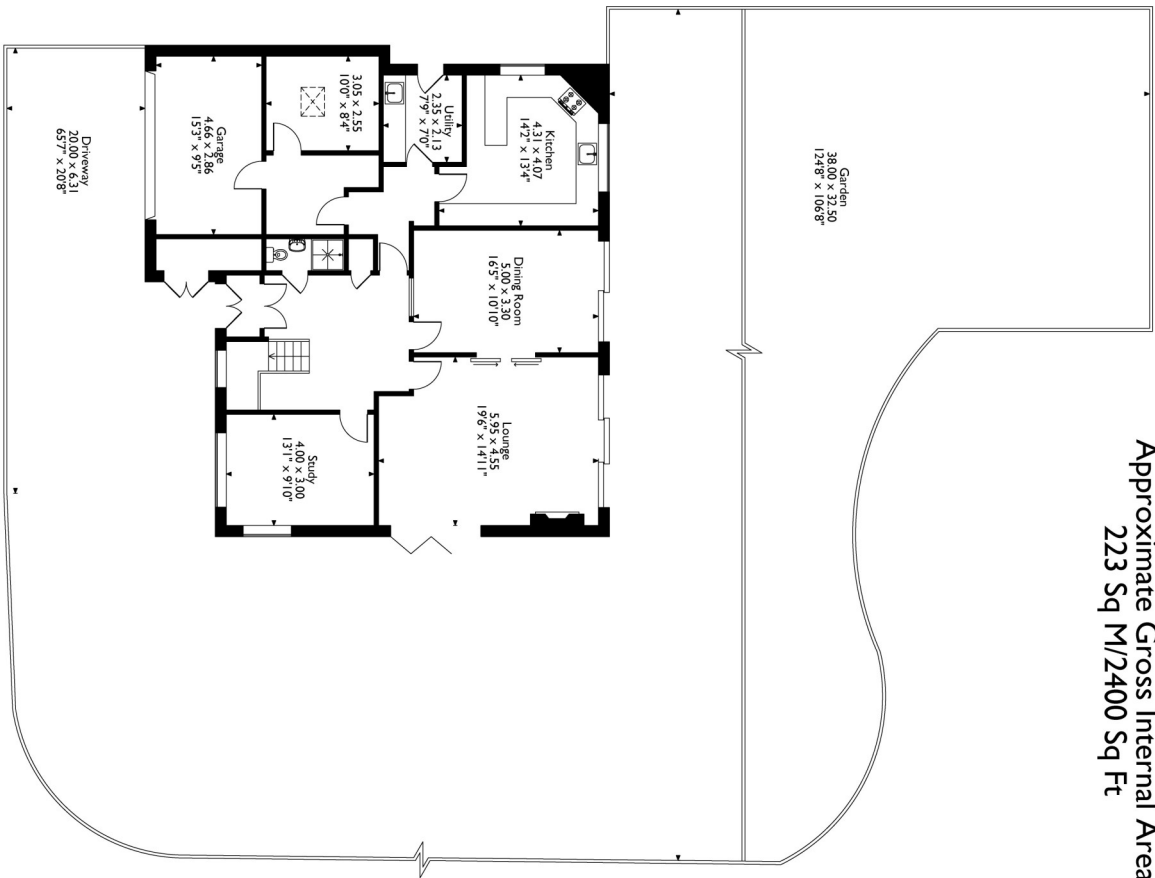
OLD HALL DRIVE

OLD HALL CLOSE

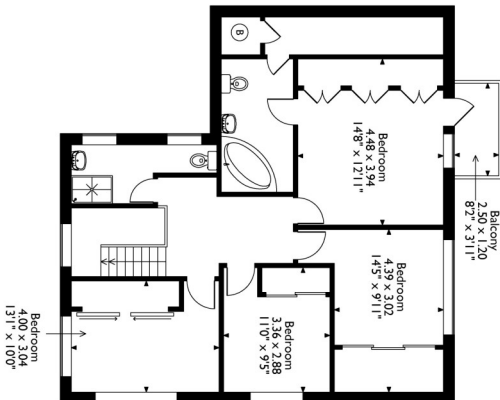
PAINES LANE

MOSS

Old Hall Drive, Pinner,
 Approximate Gross Internal Area
 223 Sq M/2400 Sq Ft



Ground Floor



First Floor

Please note that the location of doors, windows and other items are approximate and this floorplan is to be used for illustrative purposes only. Unauthorized reproduction is prohibited.

For appointments to view please call David Charles 020 8866 0222

All measurements are taken manually and whilst every care is taken with their accuracy they must be considered approximate and should not be relied upon when purchasing carpets or furniture. No responsibility is taken for any error, omission or misunderstanding in these particulars which do not constitute an offer or contract. Services and appliances have not been tested and therefore no warranty is offered on their operational condition.