

DAVID CHARLES

ESTATE AGENTS • VALUERS • SURVEYORS
THE ESTATE OFFICE • 34 HIGH STREET • PINNER • MIDDLESEX HA5 5PW
TELEPHONE 020 8866 0222 • FAX 020 8868 3544
WEBSITE www.david-charles.co.uk • E-MAIL pinner-sales@david-charles.co.uk

PINNER COURT, PINNER, MIDDLESEX, HA5 5RL



PRICE....£375,000 SHARE OF FREEHOLD

This beautifully presented top floor flat offers attractive views over the communal gardens and feature water fountain. An electric gate leads to private residents parking and a security intercom allows access to the second floor landing. The accommodation includes a 15'9 double aspect living room leading onto a private balcony with a south westerly aspect. The spacious kitchen has integrated appliances and wooden work surfaces and there is a modern white bathroom suite. The property is ideally located within half a mile of Pinner Park and Nower Hill Schools and North Harrow town centre. Pinner centre is within three quarter of a mile and local parks and recreational facilities are within walking distance. The flat has a long lease, a share of the freehold and no upper chain.

020 8866 0222









COUNCIL TAX

London Borough of Harrow - Band C - £1,744.32

LEASE AND SERVICE CHARGE

Lease - 956 Years (from 1978)

Service Charge - £516.01 per quarter /£2,064.04 per annum (includes building insurance, maintenance of roof work, chimneys, communal gardens and communal areas, window cleaning)

Sinking Fund - £334.80 per quarter/£1,339.20 per annum (for any proposed future works to the development)

LOCAL SCHOOLS

St John Fisher Catholic Primary School - 0.21 miles

Pinner Park Primary School - 0.56 miles

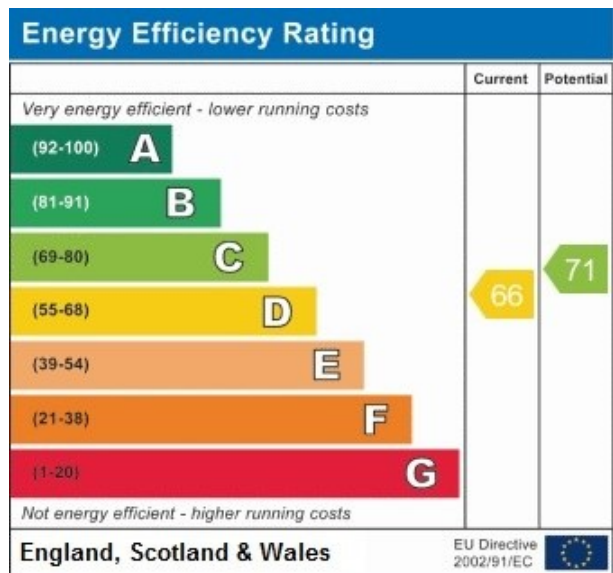
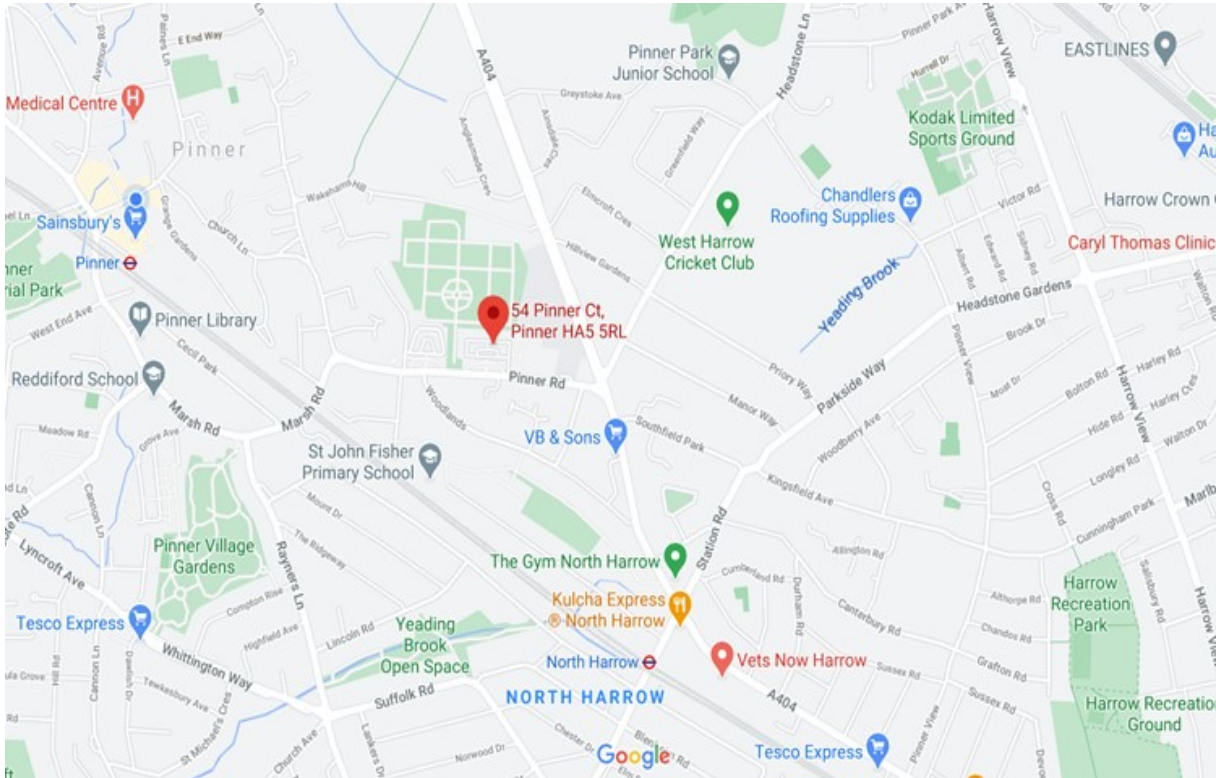
Nower Hill High School - 0.1 miles

Hatch End High School - 1.13 miles

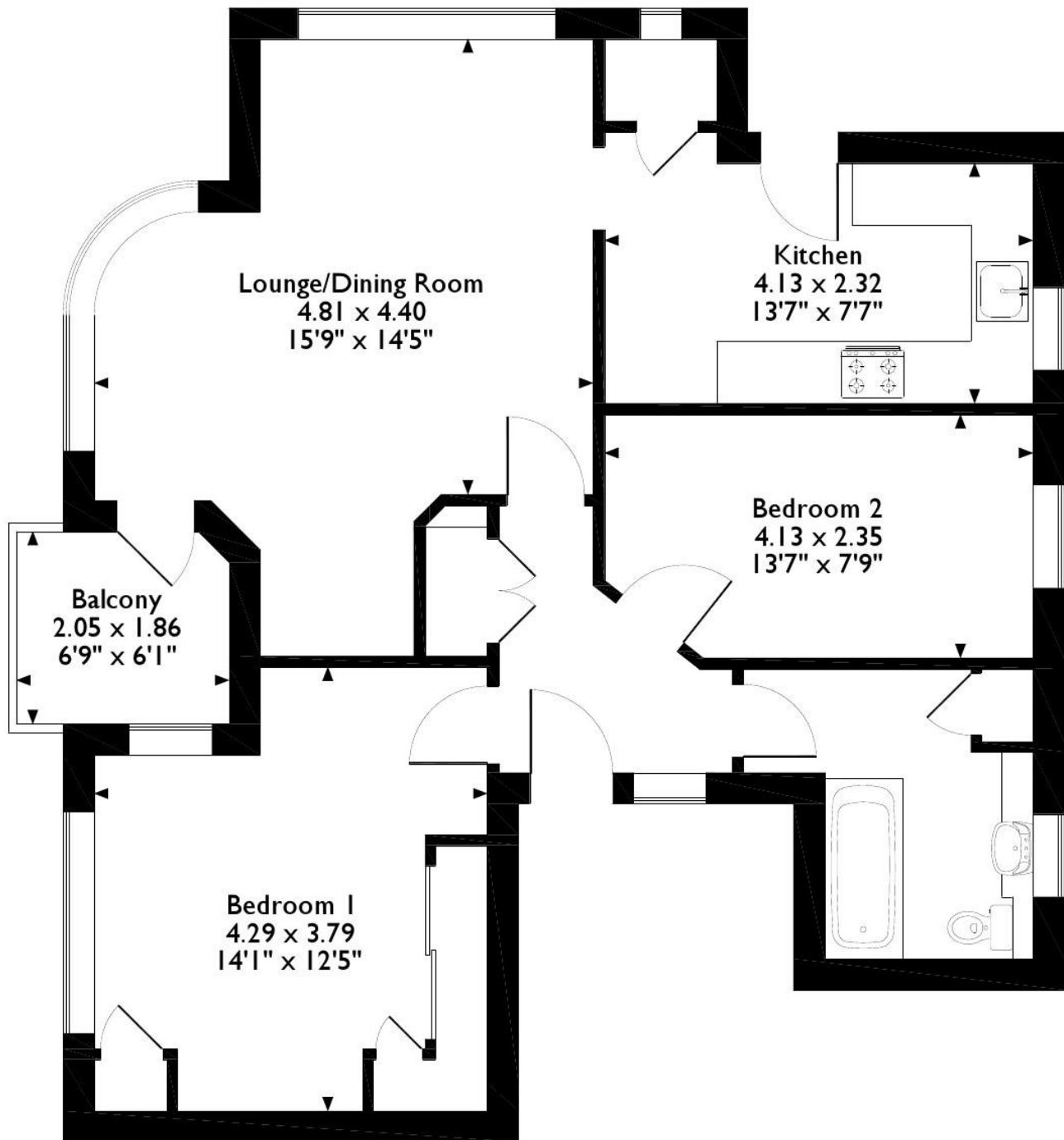
LOCAL TRANSPORT

North Harrow Tube Station (Metropolitan Line) - 0.7 miles

Pinner Tube Station (Metropolitan Line) - 0.9 miles



Pinner Court, Pinner
Approximate Gross Internal Area
70 Sq M/751 Sq Ft



Second Floor

Please note that the location of doors, windows and other items are approximate and this floorplan is to be used for illustrative purposes only. Unauthorized reproduction is prohibited.

For appointments to view please call David Charles 020 8866 0222

All measurements are taken manually and whilst every care is taken with their accuracy they must be considered approximate and should not be relied upon when purchasing carpets or furniture. No responsibility is taken for any error, omission or misunderstanding in these particulars which do not constitute an offer or contract. Services and appliances have not been tested and therefore no warranty is offered on their operational condition.