

DAVID CHARLES

ESTATE AGENTS • VALUERS • SURVEYORS
THE ESTATE OFFICE • 34 HIGH STREET • PINNER • MIDDLESEX HA5 5PN
TELEPHONE 020 8866 0222 • FAX 020 8868 3544
WEBSITE www.david-charles.co.uk • E-MAIL enquiries@david-charles.co.uk

FURHAM FEILD, HATCH END, HA5 4DX



PRICE....£910,000....FREEHOLD

This spacious and extended Comben & Wakeling four bedroom semi detached family house (1658 sq ft) which located in the highly desirable Hatch End Park Estate, within 0.3 miles to Hatch End Overground Train Station and 0.5 miles to Grimsdyke School (Ofsted Outstanding). The accommodation comprises of a large 15ft living room with feature fireplace, a separate 15'2ft dining room, 14ft study with guest WC and a fitted kitchen with Amtico flooring and granite worktops. On the first floor there are two double bedrooms and a single fourth bedroom and family bathroom with separate WC. On the second floor the master bedroom has high ceilings and a Juliet balcony filling the room with natural light, and benefits from a concealed dressing/wardrobe area and an en-suite shower room. Outside the 65ft rear garden has an ornate patio and is mainly laid to lawn with shrub and flower borders with the benefit of a 28ft outhouse ideal from entertaining or working from home. The front provides own drive with block paved off street parking for several cars. The property also benefits from the potential to extended to the side and to the rear (STPP) and is offered with a complete upper chain.

020 8866 0222

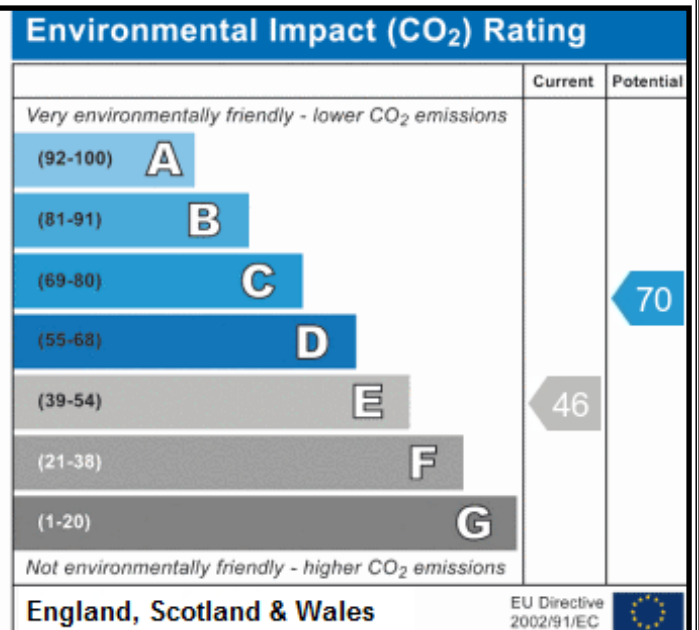
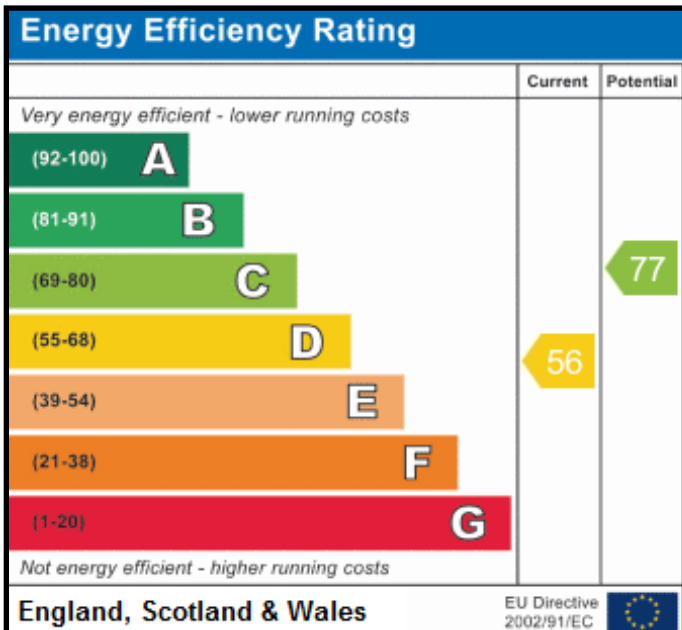
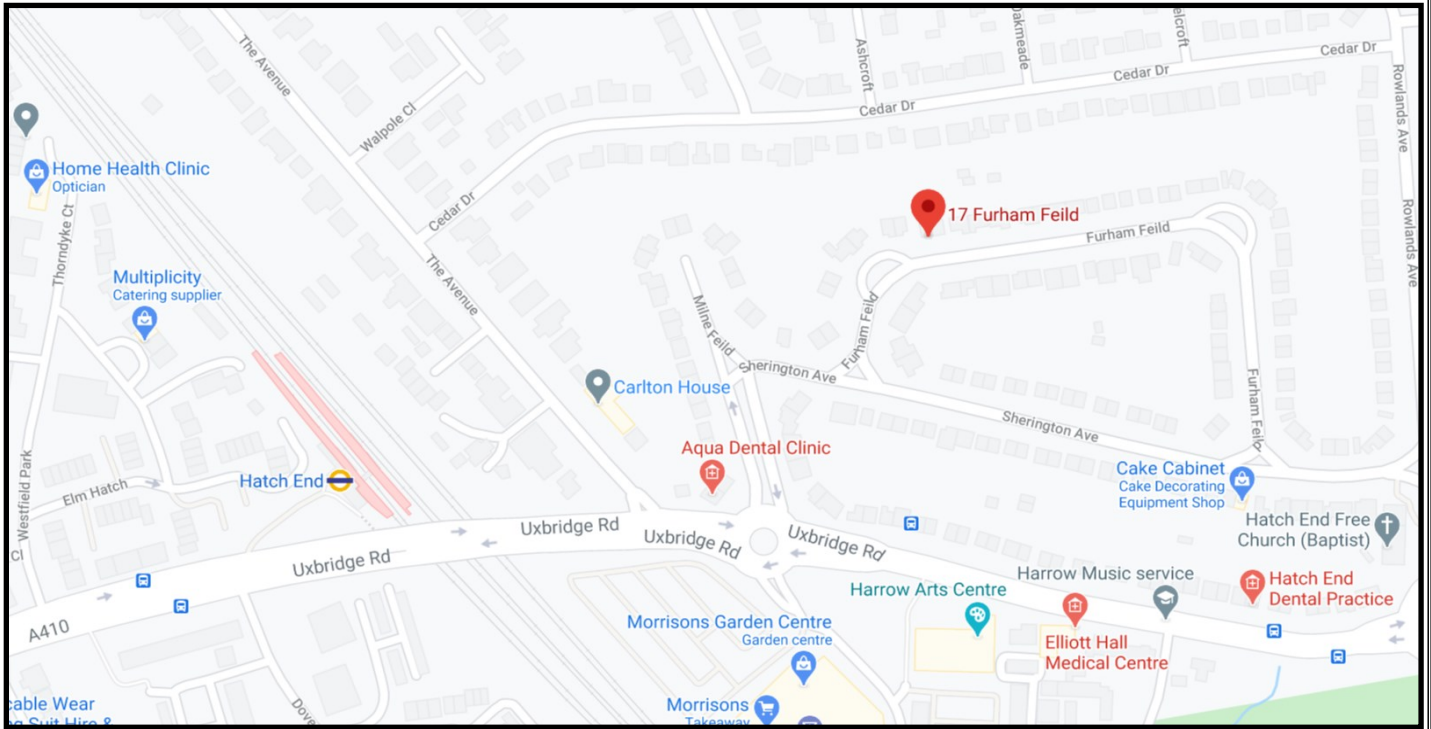












COUNCIL TAX

London Borough of Harrow - Band F - £2,679.14

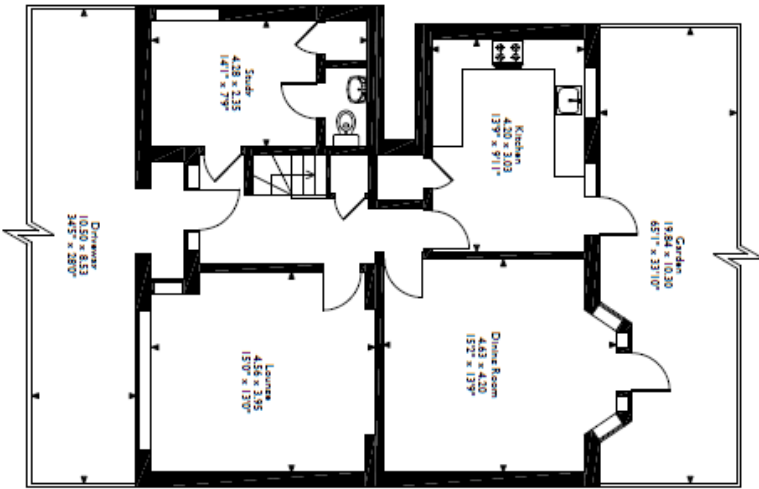
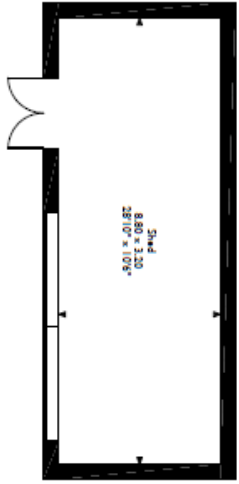
LOCAL SCHOOLS

- Grimsdyke Primary School - 0.52 Miles
- St Teresa's Catholic Primary School - 0.57 Miles
- Hatch End High School - 0.30 Miles
- Nower Hill High School - 1.33 Miles

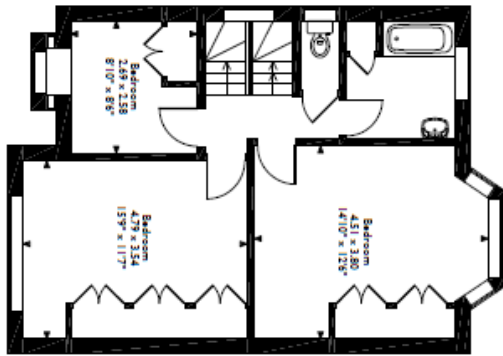
LOCAL TRANSPORT

- Hatch End (London Overground) - 0.3 Miles
- Pinner Station (Metropolitan Line) - 1.9 Miles

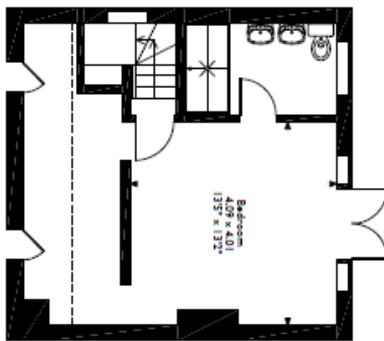
Furham Feild, Hatch End
 Approximate Gross Internal Area
 Main House = 155 Sq M/1658 Sq Ft
 Shed = 28 Sq M/303 Sq Ft



Ground Floor



First Floor



Loft Room

Please note that the location of doors, windows and other items are approximate and this floorplan is to be used for illustrative purposes only. Unauthorized reproduction is prohibited.

For appointments to view please call David Charles 020 8866 0222

All measurements are taken manually and whilst every care is taken with their accuracy they must be considered approximate and should not be relied upon when purchasing carpets or furniture. No responsibility is taken for any error, omission or misunderstanding in these particulars which do not constitute an offer or contract. Services and appliances have not been tested and therefore no warranty is offered on their operational condition.