

DAVID CHARLES

ESTATE AGENTS • VALUERS • SURVEYORS
THE ESTATE OFFICE • 34 HIGH STREET • PINNER • MIDDLESEX HA5 5PW
TELEPHONE 020 8866 0222 • FAX 020 8868 3544
WEBSITE www.david-charles.co.uk • E-MAIL pinner-sales@david-charles.co.uk

EASTCOTE ROAD, PINNER, MIDDLESEX HA5 1EU



GUIDE PRICE ... £949,950 ... FREEHOLD

An extended four bedroom detached family home (1,830 sq ft) located within the catchment area of Cannon Lane School and within one mile of both Pinner Village and Eastcote centre's offering a wide range of amenities and the Metropolitan and Piccadilly Line train stations. Offering attractive original features including leaded light stain glass windows and an inglenook fireplace, the accommodation is naturally light and airy. It includes two spacious reception rooms, a kitchen with a triple aspect breakfast area and a study/third reception. To the first floor there are three double bedrooms, a 8'10 bedroom four and family bathroom with separate WC. The master bedroom offers attractive views over neighbouring gardens and Harrow on the Hill in the distance. Outside there is a garage with own drive and a 60' rear garden with a southerly aspect. There is excellent scope for a rear extension and loft conversion, making this house future proof for the growing family.

VIEWING DAY SATURDAY 16TH JULY, BY APPOINTMENT ONLY

020 8866 0222





COUNCIL TAX

London Borough of Harrow - Band G - £2,599.35.

LOCAL SCHOOLS

Cannon Lane First & Middle School - 0.3 miles

West Lodge First & Middle School - 0.6 miles

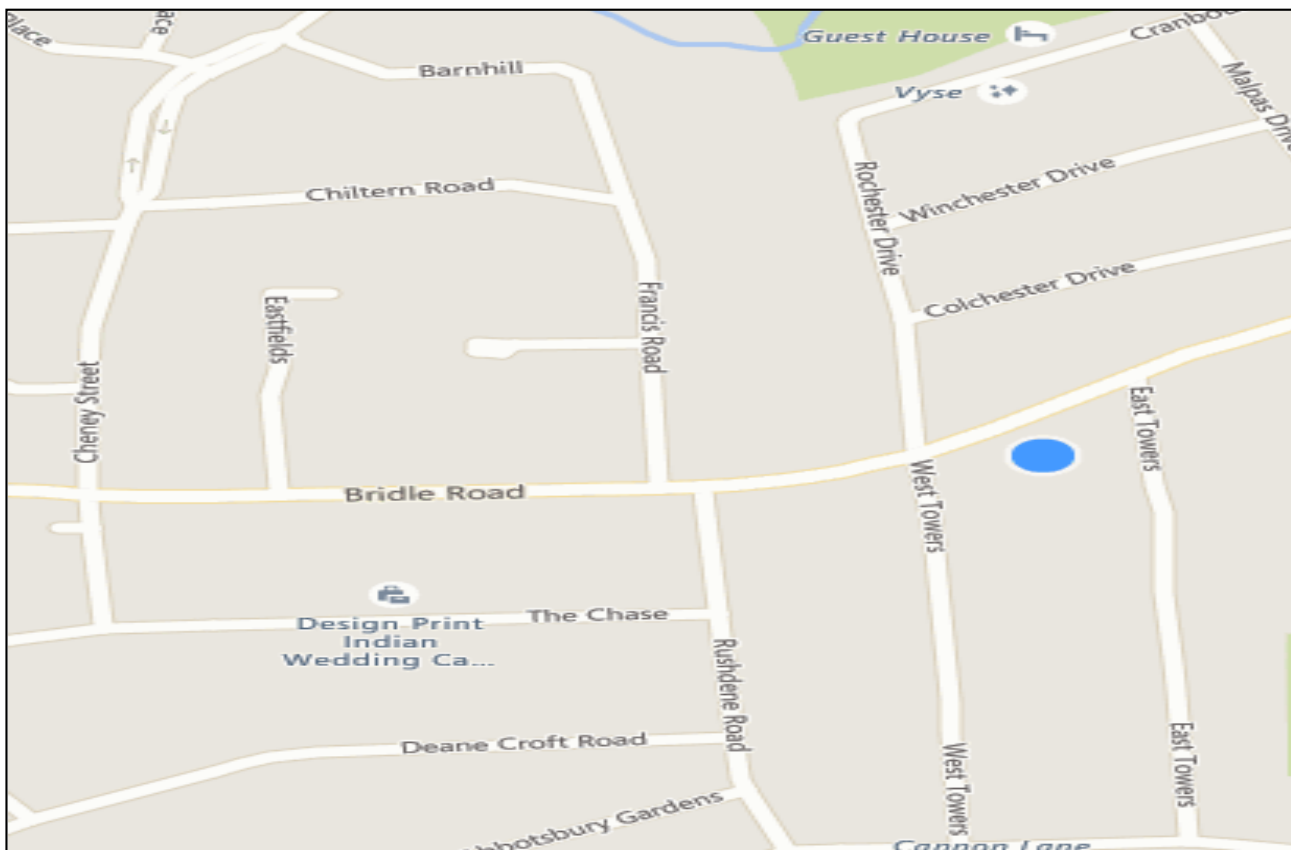
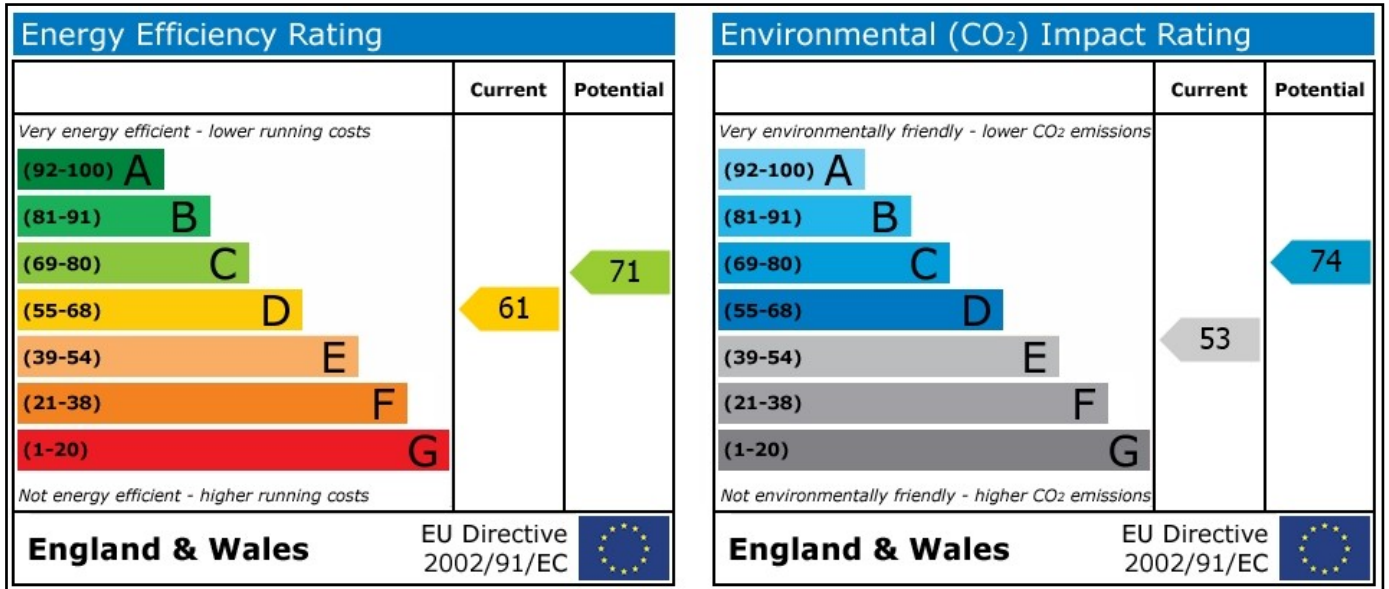
Pinner High School - 1 mile (opening September 2016)

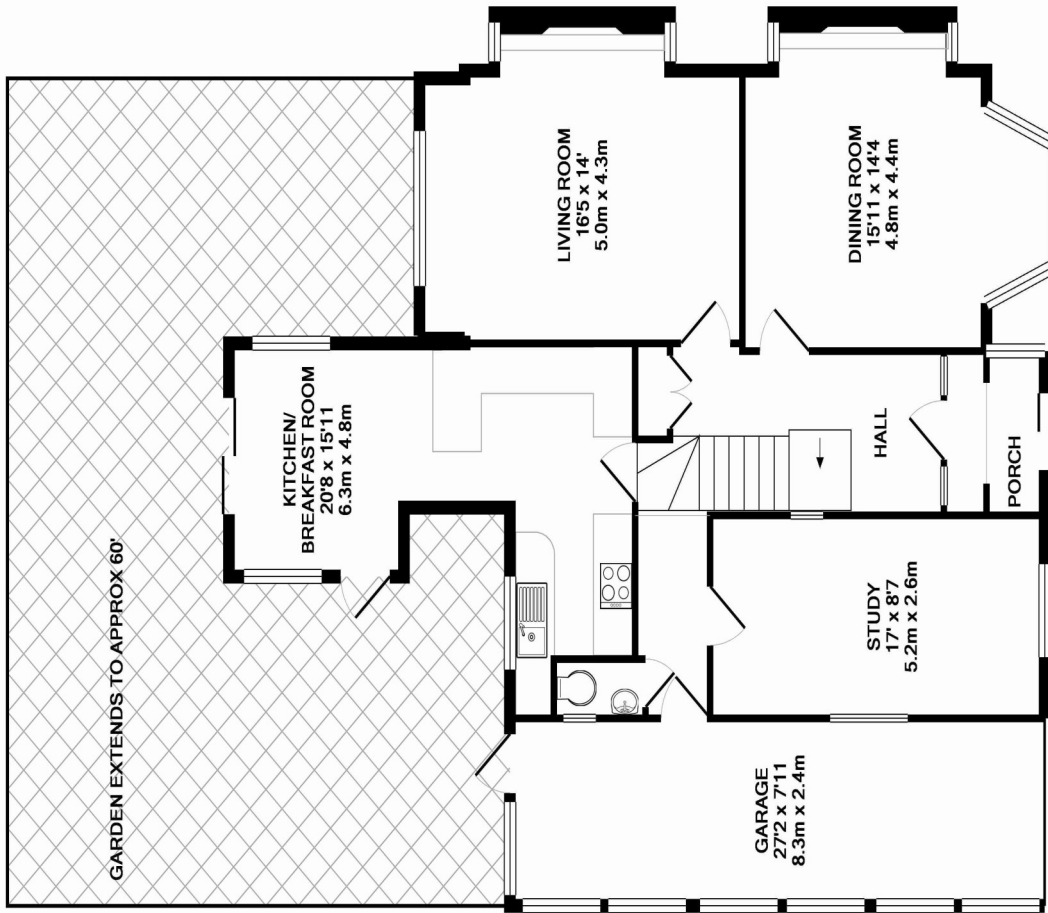
LOCAL TRANSPORT

Eastcote Metropolitan/Piccadilly Line train station - 0.7 miles

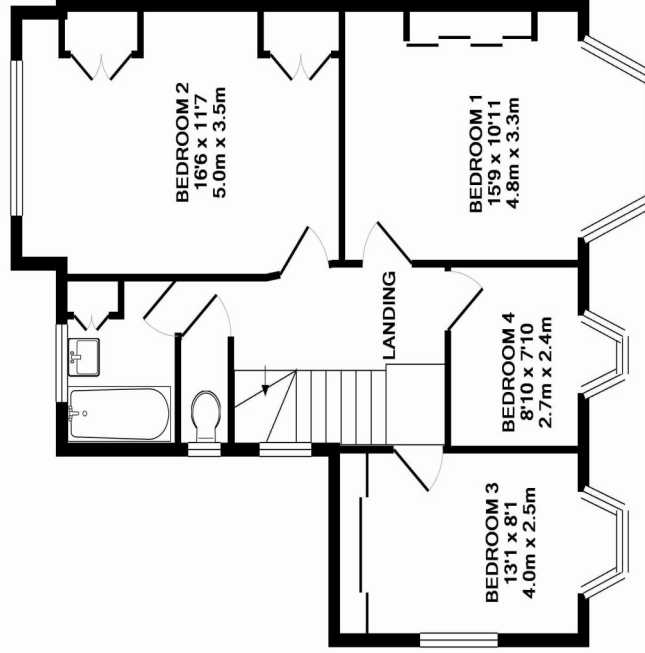
Pinner Metropolitan Line Station - 0.6 mile

Rayners Lane Metropolitan Line train station - 1 miles





GROUND FLOOR
APPROX. FLOOR
AREA 1168 SQ.FT.
(108.6 SQ.M.)



1ST FLOOR
APPROX. FLOOR
AREA 661 SQ.FT.
(61.4 SQ.M.)

TOTAL APPROX. FLOOR AREA 1830 SQ.FT. (170.0 SQ.M.)

Whilst every attempt has been made to ensure the accuracy of the floor plan contained here, measurements of doors, windows, rooms and any other items are approximate and no responsibility is taken for any error, omission, or mis-statement. This plan is for illustrative purposes only and should be used as such by any prospective purchaser. The accuracy of the measurements shown on this plan have not been tested and no guarantee as to their operability or efficiency can be given.

Made with Metropix ©2016