

DAVID CHARLES

ESTATE AGENTS • VALUERS • SURVEYORS
THE ESTATE OFFICE • 34 HIGH STREET • PINNER • MIDDLESEX HA5 5PN
TELEPHONE 020 8866 0222 • FAX 020 8868 3544
WEBSITE www.david-charles.co.uk • E-MAIL enquiries@david-charles.co.uk

LOVE LANE, PINNER VILLAGE, HA5 3EX



PRICE....£1,100,000... FREEHOLD

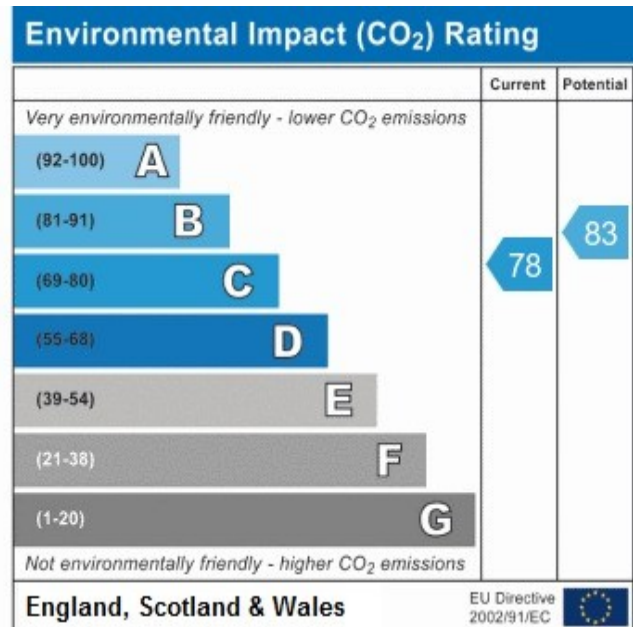
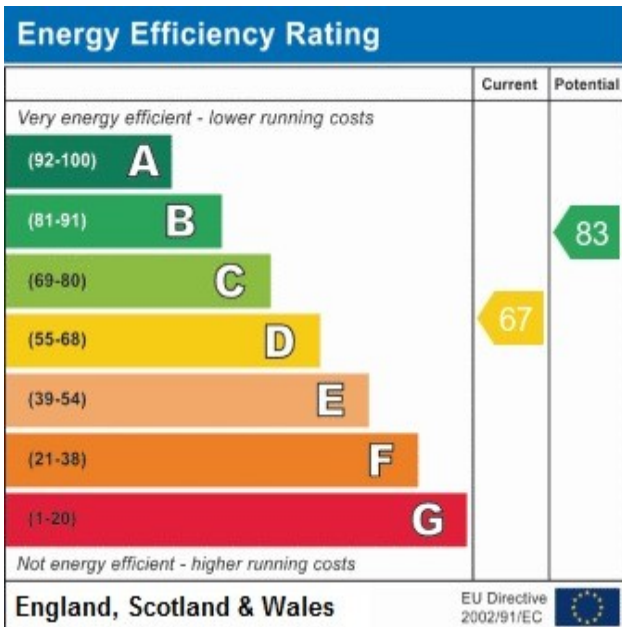
This beautifully presented four bedroom, two bathroom Edwardian house (2040 Sq Ft/190 Sq M) has been sympathetically updated and extended to a high standard, while retaining many period features. It benefits from an extended living room with attractive oak flooring, a feature fireplace and Bi fold doors leading to the patio outside. There is a separate sitting room and a modern kitchen with integrated appliances and Amtico flooring which follows through to the breakfast/dining area. The 25' x 8' utility/storage room has a wide range of fitted units and allows access from the front to the back of the house. The first floor offers three double bedrooms, bedroom four and a modern family bathroom with mosaic tiled flooring and a separate shower room. There is excellent scope for a loft conversion to add a further bedroom and bathroom making the house future proof for the growing family. Outside the front provides off street parking and the attractive west facing rear garden is approximately 100' in length with a patio and main lawn with mature flowerbed and hedgerow borders.

020 8866 0222









COUNCIL TAX

London Borough of Harrow - Band G - £2,493.95

LOCAL SCHOOLS

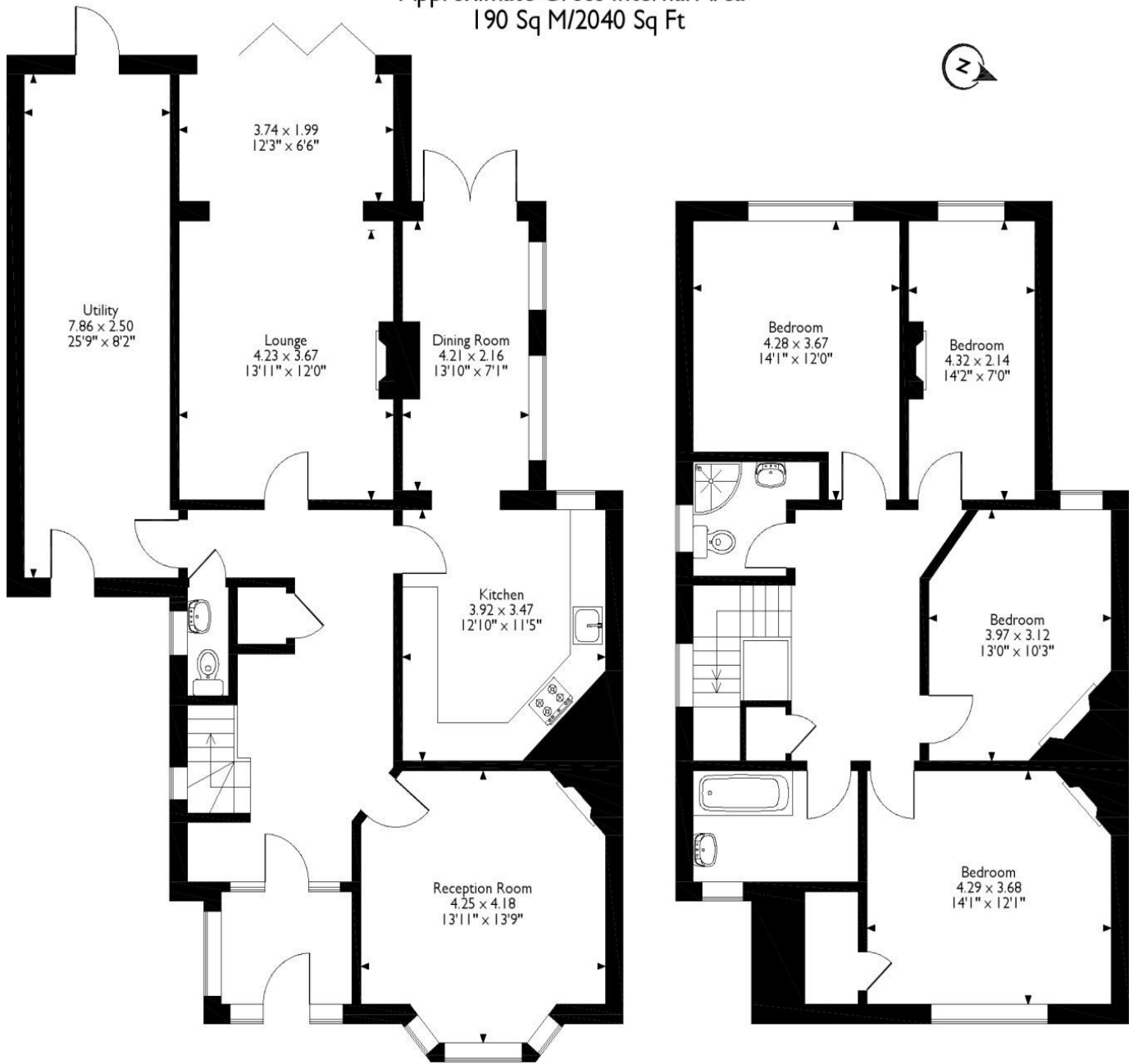
- West Lodge Primary School - 0.4 Miles
- Reddiford School - 0.5 Miles
- Pinner Wood School - 0.7 Miles
- St John's Fishers Primary School - 0.8 Miles

LOCAL TRANSPORT

- Pinner Station - 0.2 Miles
- Hatch End Station - 1.1 Miles
- Northwood Hills - 1.1 Miles

Love Lane, Pinner

Approximate Gross Internal Area
190 Sq M/2040 Sq Ft



Ground Floor

First Floor

Please note that the location of doors, windows and other items are approximate and this floorplan is to be used for illustrative purposes only.

For appointments to view please call David Charles 020 8866 0222

All measurements are taken manually and whilst every care is taken with their accuracy they must be considered approximate and should not be relied upon when purchasing carpets or furniture. No responsibility is taken for any error, omission or misunderstanding in these particulars which do not constitute an offer or contract. Services and appliances have not been tested and therefore no warranty is offered on their operational condition.