

DAVID CHARLES

ESTATE AGENTS • VALUERS • SURVEYORS
THE ESTATE OFFICE • 34 HIGH STREET • PINNER • MIDDLESEX HA5 5PW
TELEPHONE 020 8866 0222 • FAX 020 8868 3544
WEBSITE www.david-charles.co.uk • E-MAIL enquiries@david-charles.co.uk

PINNER GREEN, PINNER, MIDDLESEX, HA5 2AB



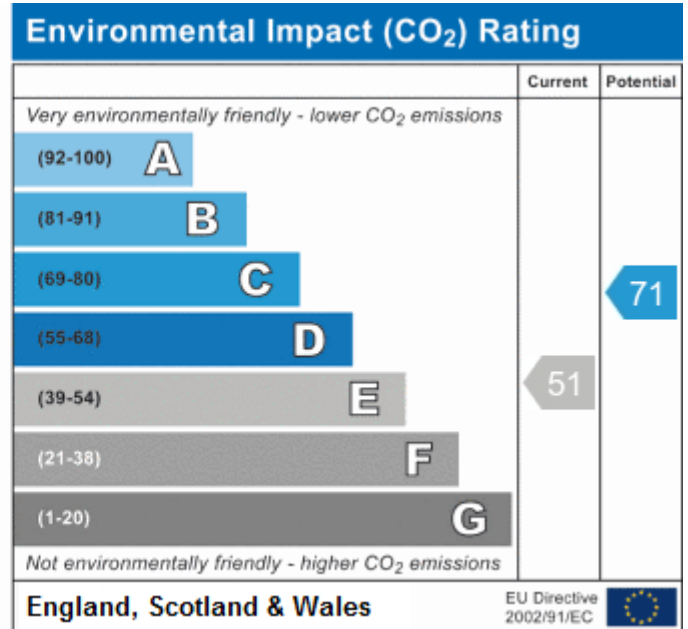
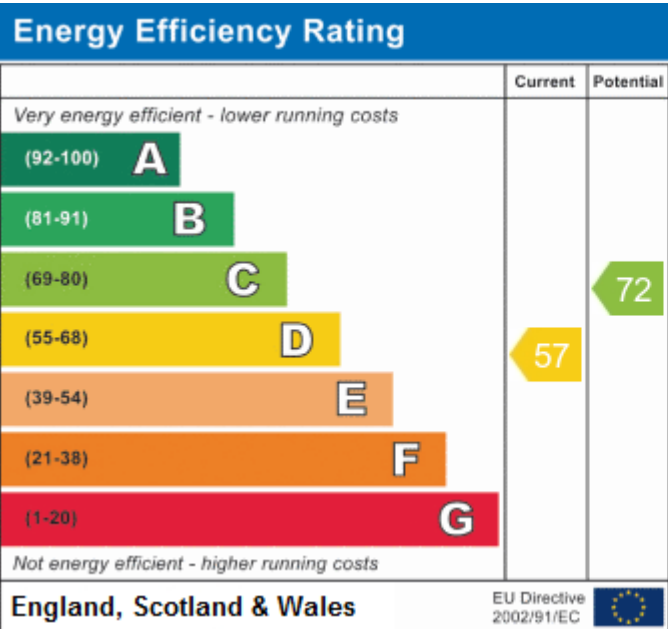
PRICE ... £1,300 PCM UNFURNISHED

A bright and spacious two bedroom first floor flat (559.2 sq.m/637 sq.ft), which is located with minutes' walk of Tesco Supermarket, local shops, restaurants and within the catchment area of Pinnerwood Primary School (Ofsted Outstanding). Both Pinner and Northwood Hills Metropolitan Line Tube Stations are also with easy reach. The accommodation comprises of stairs leading to own front door, private entrance hall, 14'8ft lounge, two bedrooms, 11'11ft modern fitted kitchen with appliances, modern bathroom/WC.
Available Immediately (Subject to References). Part Furnished.









COUNCIL TAX

London Borough of Harrow - Band C - £1,922.49

LOCAL SCHOOLS

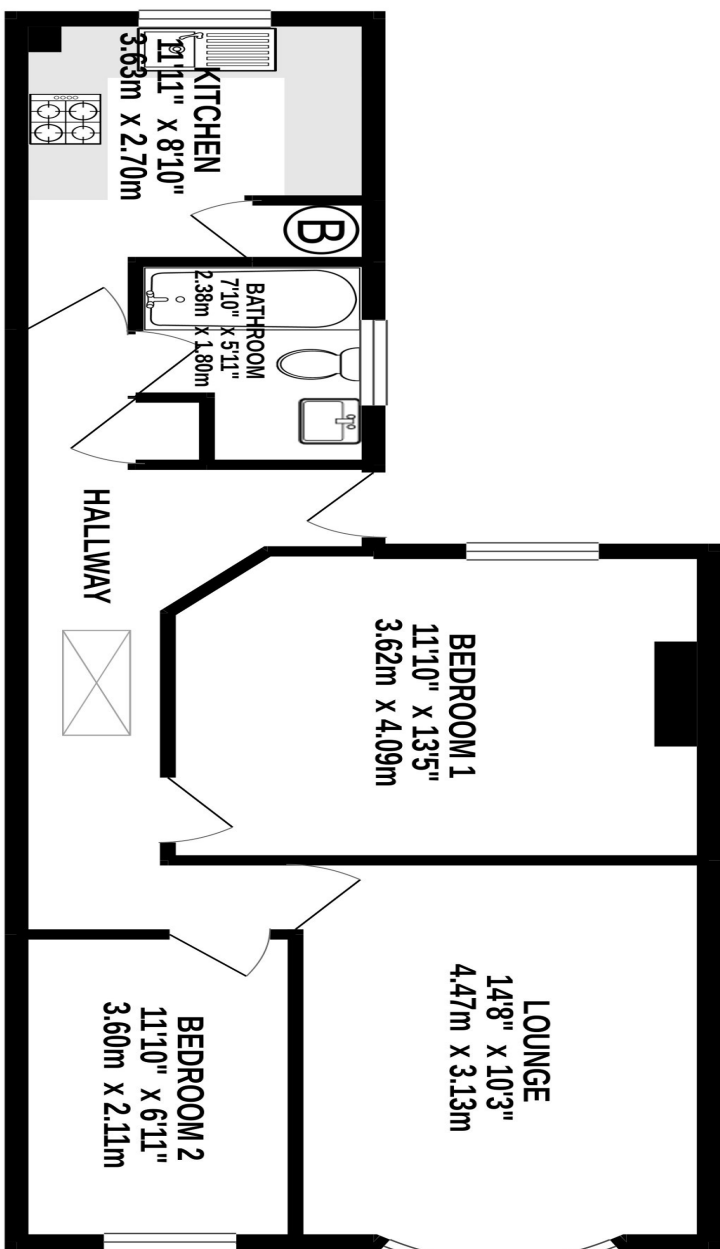
- Pinner Wood Primary School - 0.37 Miles
- West Lodge Primary School - 0.54 Miles
- Pinner High School - 1.34 Miles
- Nower Hill High School - 1.35 Miles

LOCAL TRANSPORT

- Northwood Hills Station (Metropolitan Line) - 0.8 Miles
- Pinner Station (Metropolitan Line) - 0.8 Miles

FIRST FLOOR

637 sq.ft. (59.2 sq.m.) approx.



TOTAL FLOOR AREA : 637 sq.ft. (59.2 sq.m.) approx.

Whilst every attempt has been made to ensure the accuracy of the floorplan contained here, measurements of doors, windows, rooms and any other items are approximate and no responsibility is taken for any error, omission or mis-statement. This plan is for illustrative purposes only and should be used as such by any prospective purchaser. The services, systems and appliances shown have not been tested and no guarantee as to their operability or efficiency can be given.

Made with Metropix ©2020



For appointments to view please call David Charles 020 8866 0222

All measurements are taken manually and whilst every care is taken with their accuracy they must be considered approximate and should not be relied upon when purchasing carpets or furniture. No responsibility is taken for any error, omission or misunderstanding in these particulars which do not constitute an offer or contract. Services and appliances have not been tested and therefore no warranty is offered on their operational condition.