

DAVID CHARLES

ESTATE AGENTS • VALUERS • SURVEYORS
THE ESTATE OFFICE • 34 HIGH STREET • PINNER • MIDDLESEX HA5 5PW
TELEPHONE 020 8866 0222 • FAX 020 8868 3544
WEBSITE www.david-charles.co.uk • E-MAIL enquiries@david-charles.co.uk

PINNER ROAD, PINNER, MIDDLESEX HA5 5QZ



PRICE....£1,600 PCM

This well presented three bedroom ground floor garden flat (740.88sq ft/68.83sq m) is located within the catchment area of Nower Hill High School & St John's Fisher Primary School (Ofsted Rated Outstanding) and walking distance to Pinner Village centre and the Metropolitan Line train station (Baker Street 25 minutes). The accommodation comprises of three bedrooms, fitted bathroom & WC, 12'7ft lounge leading to 20ft fitted kitchen/breakfast room with double glazed doors overlooking the rear garden. Outside the property benefits own section of south facing rear garden which is main lawn and allocated parked to the rear of the property. Available from the 5th November & Part Furnished (Subject to References).

020 8866 0222







COUNCIL TAX

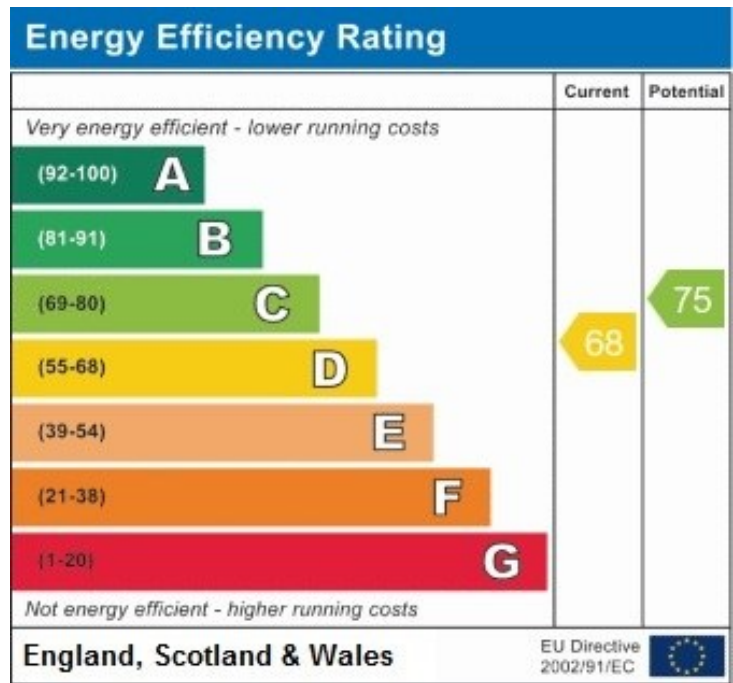
London Borough of Harrow - Band D - £2,162.80

LOCAL SCHOOLS

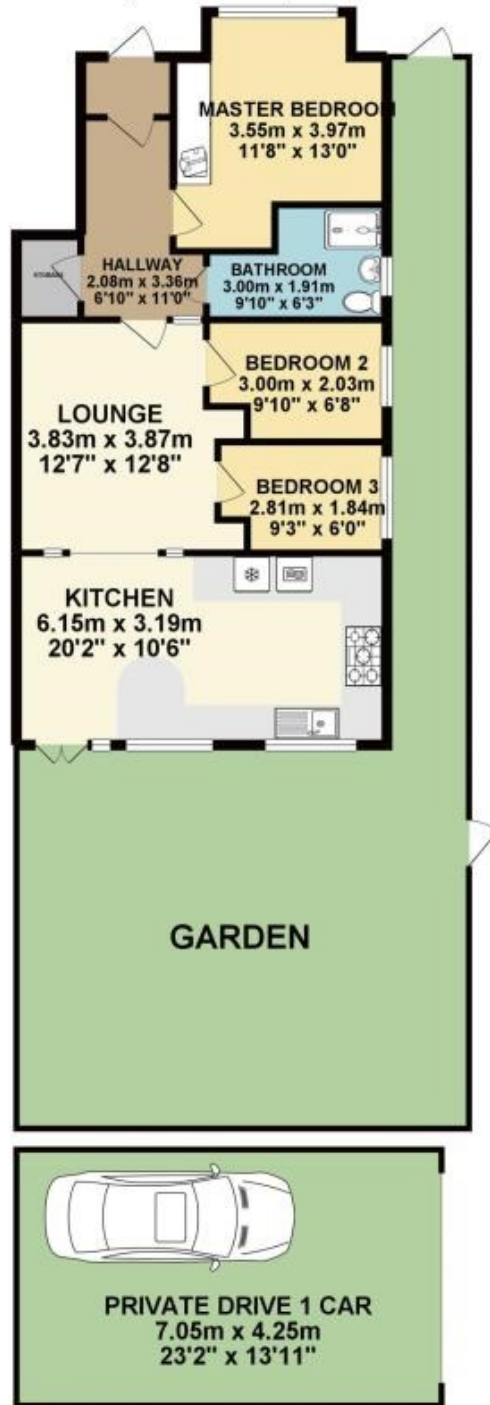
St John's Fisher Catholic Primary School - 0.1 Miles
Reddiford School - 0.3 Miles
Nower Hill High - 0.3 Miles

LOCAL TRANSPORT

Pinner (Metropolitan Line)- 0.7 Miles
North Harrow (Metropolitan Line) - 0.7 Miles



GROUND FLOOR 68.83 sq. m.
(740.88 sq. ft.)



TOTAL FLOOR AREA : 68.83 sq. m. (740.88 sq. ft.) approx.

Whilst every attempt has been made to ensure the accuracy of the floorplan contained here, measurements of doors, windows, rooms and any other items are approximate and no responsibility is taken for any error, omission or mis-statement. This plan is for illustrative purposes only and should be used as such by any prospective purchaser. The services, systems and appliances shown have not been tested and no guarantee as to their operability or efficiency can be given.
Made with Metropix ©2019

Pinner Road, Pinner, HA5 5QZ

For appointments to view please call David Charles 020 8866 0222

All measurements are taken manually and whilst every care is taken with their accuracy they must be considered approximate and should not be relied upon when purchasing carpets or furniture. No responsibility is taken for any error, omission or misunderstanding in these particulars which do not constitute an offer or contract. Services and appliances have not been tested and therefore no warranty is offered on their operational condition.