

DAVID CHARLES

EXECUTIVE LETTINGS • PROPERTY MANGEMENT
THE ESTATE OFFICE • 34 HIGH STREET • PINNER • MIDDLESEX HA5 5PW
TELEPHONE 0208 866 0222 • FAX 020 8868 3544
WEBSITE www.david-charles.co.uk • E-MAIL enquiries@david-charles.co.uk

WILLOW DENE, PINNER, MIDDLESEX, HA5 3LT



£2,750 PCM

This generously proportioned and well presented four double bedroom linked detached house (2584 sq/ft) is situated in a popular cul de sac location off the Uxbridge Road, close to Pinner Village. Benefits include three receptions rooms and a fitted kitchen with separate utility room. There is a garage with own drive with additional off street parking, an 83ft south east facing rear garden and a 31ft patio. Pinner Village is within walking distance, offering a variety of boutique shops, restaurants, coffee houses and popular supermarkets.

There are excellent transport facilities including local bus links and the Metropolitan Line Station.

Unfurnished. Available from 1st October (Subject to References)

- Detached House
- Four Double Bedrooms
- 23ft Lounge
- Two Further Reception Rooms
- * Fitted Kitchen and Separate Utility Room
- * 83ft Rear Garden and 31ft Side Patio
- * Garage and Off Street Parking
- * Available from 1st October

(Subject to References)

0203 226 0926







COUNCIL TAX

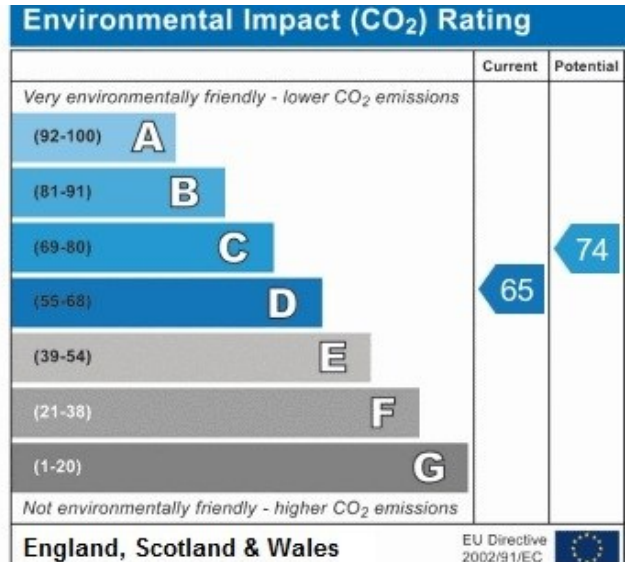
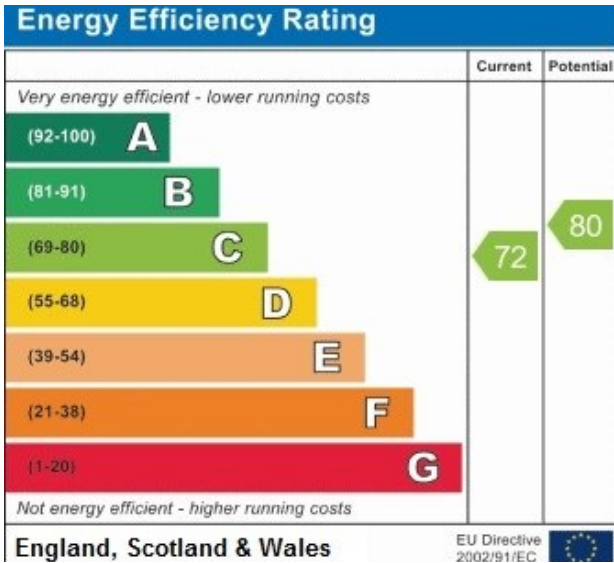
London Borough of Harrow Band G - £3,403.49

LOCAL SCHOOLS

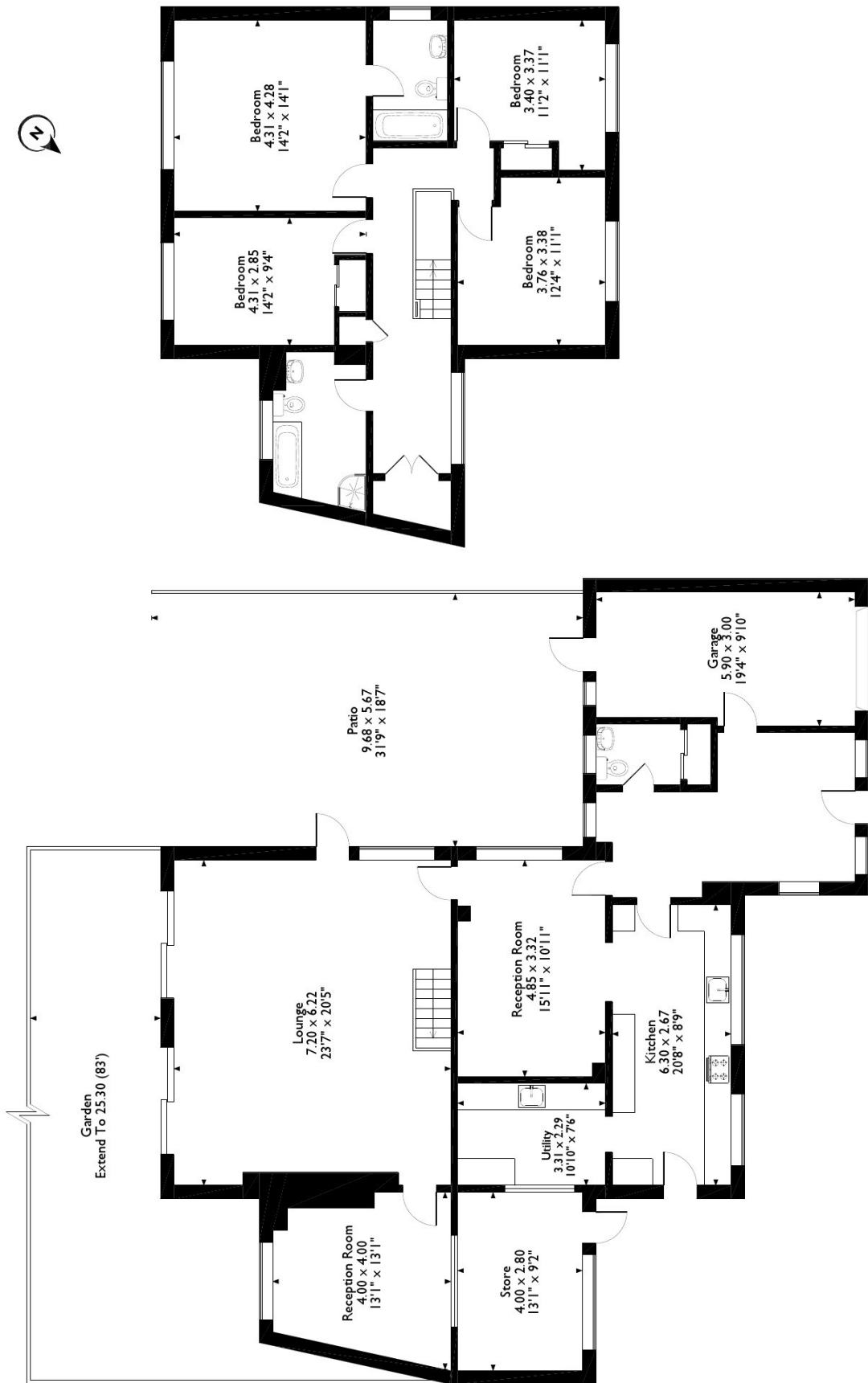
- Pinner Wood Primary School - 0.29 miles
- Harlyn Primary School - 0.62 miles
- Grimsdyke Primary School - 1.03 miles
- Northwood College - 0.78 miles

LOCAL TRANSPORT

- Pinner Station (Metropolitan Line) - 0.9 miles
- Hatch End Station (London Overground) - 1.1 miles



Willow Dene, Pinner
Approximate Gross Internal Area
241 Sq M/2584 Sq Ft



First Floor

Ground Floor

Please note that the location of doors, windows and other items are approximate and this floorplan is to be used for illustrative purposes only. Unauthorized reproduction is prohibited.

For appointments to view please call David Charles 0203 226 0926

All measurements are taken manually and whilst every care is taken with their accuracy they must be considered approximate and should not be relied upon when purchasing carpets or furniture. No responsibility is taken for any error, omission or misunderstanding in these particulars which do not constitute an offer or contract. Services and appliances have not been tested and therefore no warranty is offered on their operational condition.