

DAVID CHARLES

ESTATE AGENTS • VALUERS • SURVEYORS
THE ESTATE OFFICE • 34 HIGH STREET • PINNER • MIDDLESEX HA5 5PW
TELEPHONE 020 8866 0222 • FAX 020 8868 3544
WEBSITE www.david-charles.co.uk • E-MAIL pinner-sales@david-charles.co.uk

HIGH STREET, PINNER VILLAGE, MIDDLESEX, HA5 5PW



PRICE....£1795 PCM

This substantial two double bedroom first floor apartment (979 sq ft) is situated in the heart of Pinner Village offering an excellent selection of restaurants, boutique shops, supermarkets and the Metropolitan Line train station within minutes walk. It has been completely updated to a high standard throughout including rewiring, redecorating and a new kitchen and bathroom. A private entrance from the High Street leads to the first floor landing and an impressive 26' x 15' living/dining room with triple French doors overlooking the rear garden. The contemporary kitchen has integrated appliances including a washer/dryer and a dishwasher. The bathroom has a modern white suite and the master bedroom has a walk-in wardrobe. Outside there is a shared pretty 'English Country Style' garden Available from 26th August. Part Furnished (Subject to References).

020 8866 0222







COUNCIL TAX

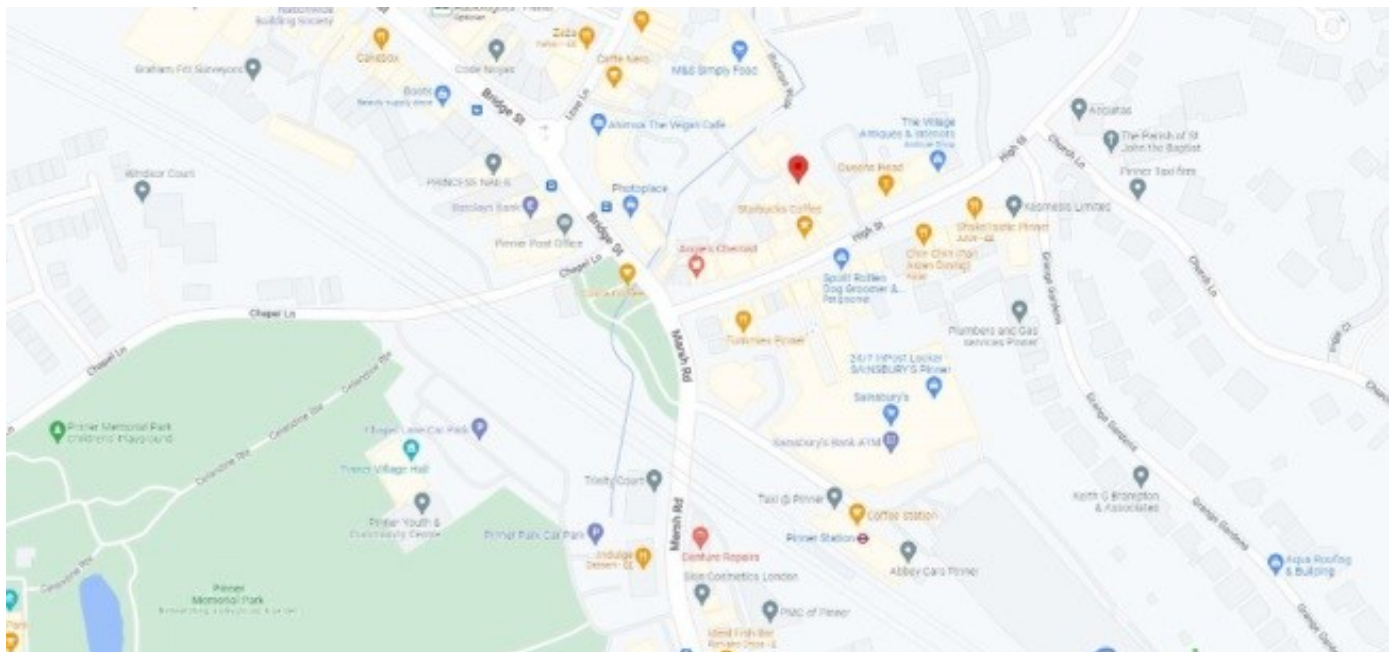
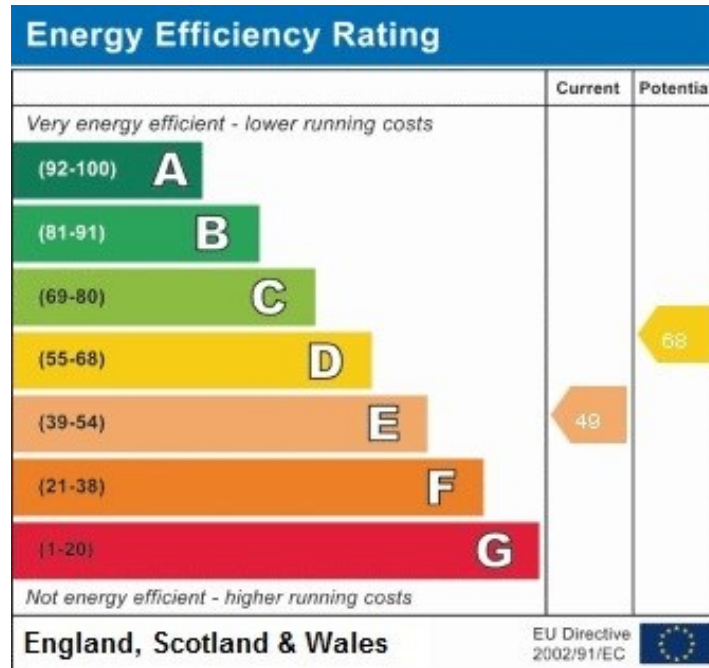
London Borough of Harrow - Band D - £2,042.09

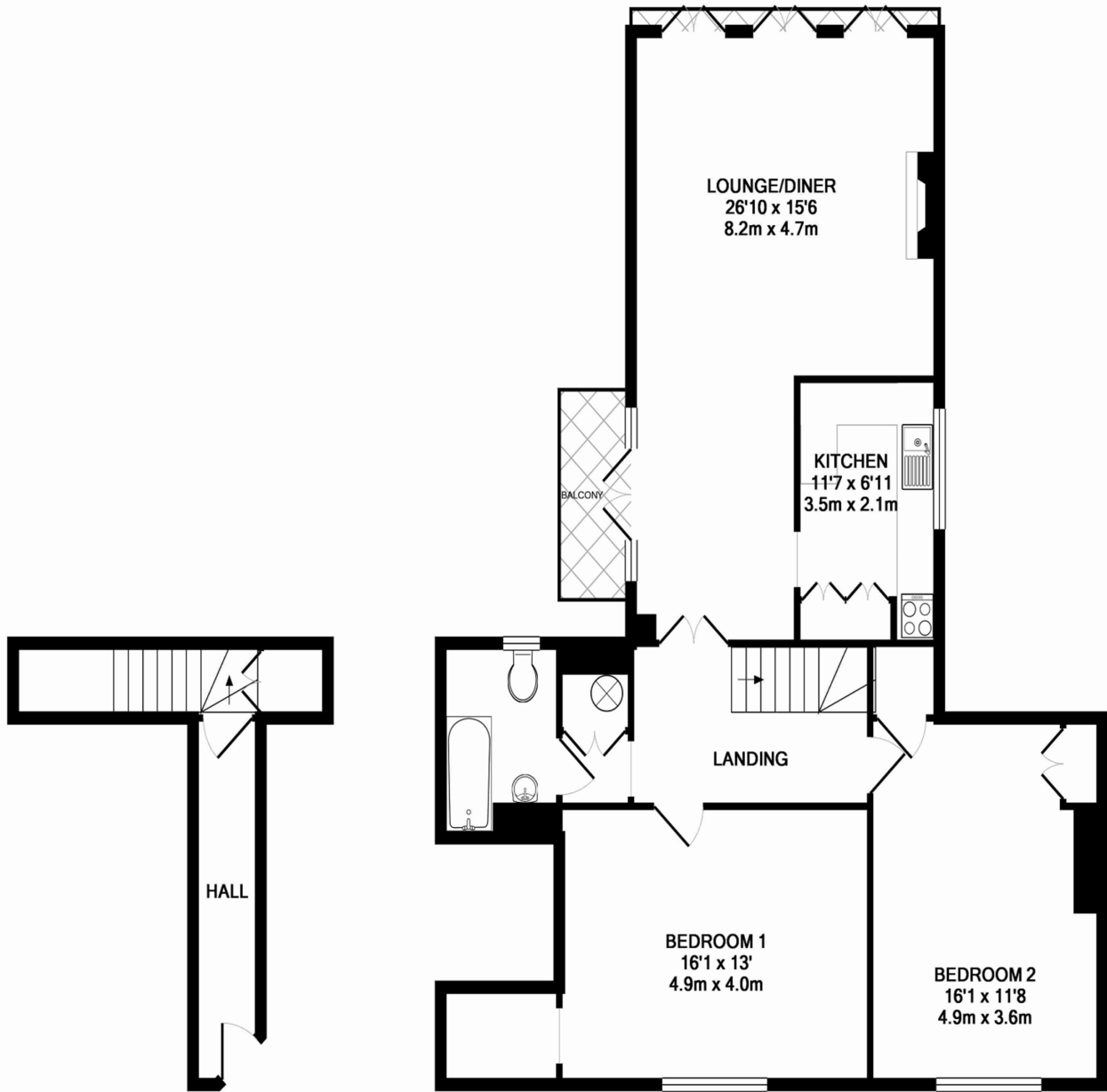
LOCAL SCHOOLS

Reddiford School - 0.2 miles
West Lodge Primary School - 0.4 miles
St John Fisher Primary School - 0.6 miles

LOCAL TRANSPORT

Pinner Metropolitan Line Station - 0.1 mile





GROUND FLOOR
APPROX. FLOOR
AREA 104 SQ.FT.
(9.7 SQ.M.)

1ST FLOOR
APPROX. FLOOR
AREA 979 SQ.FT.
(90.9 SQ.M.)

TOTAL APPROX. FLOOR AREA 1083 SQ.FT. (100.6 SQ.M.)

Whilst every attempt has been made to ensure the accuracy of the floor plan contained here, measurements of doors, windows, rooms and any other items are approximate and no responsibility is taken for any error, omission, or mis-statement. This plan is for illustrative purposes only and should be used as such by any prospective purchaser. The services, systems and appliances shown have not been tested and no guarantee as to their operability or efficiency can be given
Made with Metropix ©2016

For appointments to view please call David Charles 020 8866 0222

All measurements are taken manually and whilst every care is taken with their accuracy they must be considered approximate and should not be relied upon when purchasing carpets or furniture. No responsibility is taken for any error, omission or misunderstanding in these particulars which do not constitute an offer or contract. Services and appliances have not been tested and therefore no warranty is offered on their operational condition.